

**N14/3 SINUS EXTERNAL PROFILE**  
GAUGE - 0.7mm  
COATING - PROTEX APPROVED

**PROTEX APPROVED - EXTERNAL MAIN FIXING**  
STAINLESS STEEL SELF DRILLING & SELF TAPPING  
PAINTED / MOULDED HEAD  
16mm Ø EDPM WASHER  
**PATTERN**  
SHEET ENDS - EVERY 3NO. TROUGHS - 6 NO. FIXINGS  
INTERMEDIATE SUPPORTS - EVERY 3NO TROUGHS - 6 NO. FIXINGS

**PROTEX APPROVED - EXTERNAL STITCHER FIXING**  
STAINLESS STEEL SELF DRILLING & SELF TAPPING  
PAINTED / MOULDED HEAD  
16mm Ø EDPM WASHER  
**PATTERN**  
SIDE LAP - 600mm CENTRES

**PROTEX APPROVED - SPACER SYSTEM**  
ASHGRID AB40 BRACKET / AG40 BAR  
BRACKET DEPTH TO SUIT U-VALUE REQUIREMENT  
MINIMUM DEPTH 120mm  
EPDM THERMAL PAD  
**PATTERN**  
MAXIMUM RAIL CENTRES 1800mm  
MAXIMUM BRACKET CENTRES 1000mm.  
TO SUIT LOADING CALCULATIONS

**PROTEX APPROVED - GLASS FIBRE INSULATION**  
KNAUF FACTORY CLAD 40  
THICKNESS TO SUIT U-VALUE REQUIREMENT  
MINIMUM THICKNESS 120MM  
FIRE CLASS A1 RATED TO EN 13501-1  
MANUFACTURED IN ACCORDANCE WITH BS EN 13162  
(SUGGESTED THICKNESS TO BE >10% THAN SPACER SYSTEM DEPTH.)

**PROTEX APPROVED - LINER SIDE LAP SEALANT**  
50mm \* 1mm BUTYL TAPE  
**LOCATION**  
1-NO. CONTINUOUS RUN.  
POSITIONED CENTRAL OVER JOIN

**PROTEX APPROVED - BRACKET FIXING**  
STAINLESS STEEL SELF DRILLING & SELF TAPPING  
16mm Ø EDPM WASHER  
**PATTERN**  
AS PER LAYOUT CALCULATION

**N1000L+ INTERNAL LINER PROFILE**  
GAUGE - 0.4mm  
COATING - BRIGHT WHITE LINER

**PROTEX APPROVED - LINER MAIN FIXING**  
STAINLESS STEEL SELF DRILLING & SELF TAPPING  
16mm Ø EDPM WASHER  
**PATTERN**  
SHEET ENDS - EVERY TROUGH - 6 NO. FIXINGS  
INTERMEDIATE SUPPORTS - ALTERNATE TROUGH - 4 NO. FIXINGS

**PROTEX APPROVED- LINER STITCHER FIX**  
STAINLESS STEEL SELF DRILLING & SELF TAPPING / BULB-TITE RIVET  
16MM Ø EDPM WASHER  
**PATTERN**  
SIDE LAP - 300mm CENTRES  
FIXED INSIDE TO OUTSIDE

REV	DATE	DESCRIPTION



This draft drawing has been supplied by Firth Steels Ltd for guidance purposes only and is provided free of charge. It represents a suggested typical detail and should not be assumed as suitable for any specific project or application. It is essential to read this in conjunction with the Protex System specification documents to ensure completeness of information. Please note, no responsibility is assumed for errors or misinterpretations resulting from the information contained within this drawing. Details depicted are for illustration purposes only, and no liability is accepted for their use. Firth Steels reserves the right to modify details without notice. This drawing is the property of Firth Steels Ltd, any reproduction without explicit written consent is prohibited. Firth Steels is committed to ongoing improvement. The details and data shared in this document are reflective of the current state as of the issue date. It is the duty of the recipients to ensure that the information in this document is still up-to-date at the time of its use.

Drawing Number  
**Protex-FWS03-1 60/15 Side Lap Detail**

Fire Resistance  
**60 Minutes Integrity  
15 Minutes Insulation**

\*Contact Firth Steels technical for increased resistances technical@firth-steels.co.uk

Drawn by KP	Checked by TO	Date 16/10/2024
----------------	------------------	--------------------

Project Title PRX-FIREWALLS	Size A3	Revision A
--------------------------------	------------	---------------

<<< DO NOT SCALE FROM THIS DRAWING >>>

**N14/3 SINUS EXTERNAL PROFILE**  
 GAUGE - 0.7mm  
 COATING - PROTEX APPROVED

**PROTEX APPROVED - EXTERNAL STITCHER FIXING**  
 STAINLESS STEEL SELF DRILLING & SELF TAPPING  
 PAINTED / MOULDED HEAD  
 16mm Ø EDPM WASHER  
**PATTERN**  
 SIDE LAP - 600mm CENTRES

**PROTEX APPROVED - EXTERNAL MAIN FIXING**  
 STAINLESS STEEL SELF DRILLING & SELF TAPPING  
 PAINTED / MOULDED HEAD  
 16mm Ø EDPM WASHER  
**PATTERN**  
 SHEET ENDS - EVERY 3NO. TROUGHS - 6 NO. FIXINGS  
 INTERMEDIATE SUPPORTS - EVERY 3NO TROUGHS - 6 NO. FIXINGS

**PROTEX APPROVED - SPACER SYSTEM**  
 ASHGRID AB40 BRACKET / AG40 BAR  
 BRACKET DEPTH TO SUIT U-VALUE REQUIREMENT  
 MINIMUM DEPTH 120mm  
 EPDM THERMAL PAD  
**PATTERN**  
 MAXIMUM RAIL CENTRES 1800mm  
 MAXIMUM BRACKET CENTRES 1000mm.  
 TO SUIT LOADING CALCULATIONS

**PROTEX APPROVED - GLASS FIBRE INSULATION**  
 KNAUF FACTORY CLAD 40  
 THICKNESS TO SUIT U-VALUE REQUIREMENT  
 MINIMUM THICKNESS 120MM  
 FIRE CLASS A1 RATED TO EN 13501-1  
 MANUFACTURED IN ACCORDANCE WITH BS EN 13162  
 (SUGGESTED THICKNESS TO BE >10% THAN SPACER SYSTEM DEPTH.)

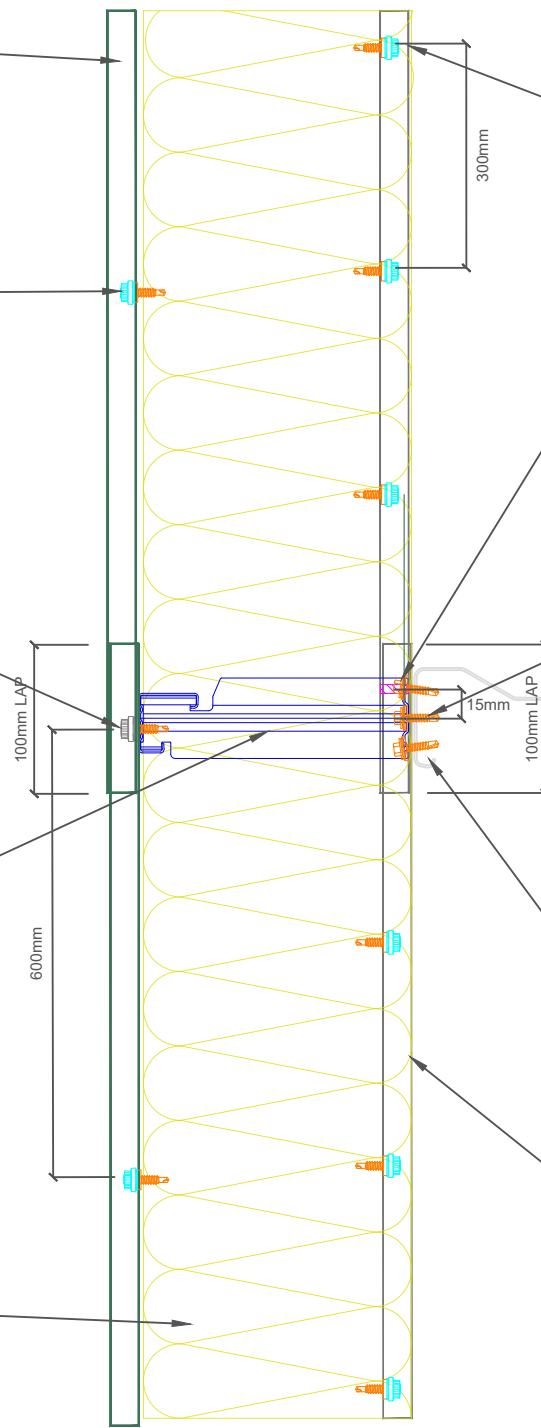
**PROTEX APPROVED- LINER STITCHER FIX**  
 STAINLESS STEEL SELF DRILLING & SELF TAPPING / BULB-TITE RIVET  
 16MM Ø EDPM WASHER  
**PATTERN**  
 SIDE LAP - 300mm CENTRES  
 FIXED INSIDE TO OUTSIDE

**PROTEX APPROVED - LINER END LAP SEALANT**  
 4mm / 9mm \* 3mm BUTYL TAPE  
 LOCATION  
 1-NO. CONTINUOUS RUN.  
 POSITIONED 15mm ABOVE CENTRAL FIXING LINE

**PROTEX APPROVED - LINER MAIN FIXING**  
 STAINLESS STEEL SELF DRILLING & SELF TAPPING  
 16mm Ø EDPM WASHER  
**PATTERN**  
 SHEET ENDS - EVERY TROUGH - 6 NO. FIXINGS  
 INTERMEDIATE SUPPORTS - ALTERNATE TROUGH - 4 NO. FIXINGS

**PROTEX APPROVED - BRACKET FIXING**  
 STAINLESS STEEL SELF DRILLING & SELF TAPPING  
 16mm Ø EDPM WASHER  
**PATTERN**  
 AS PER LAYOUT CALCULATION

**N1000L+ INTERNAL LINER PROFILE**  
 GAUGE - 0.4mm  
 COATING - BRIGHT WHITE LINER



REV	DATE	DESCRIPTION



This draft drawing has been supplied by Firth Steels Ltd for guidance purposes only and is provided free of charge. It represents a suggested typical detail and should not be assumed as suitable for any specific project or application. It is essential to read this in conjunction with the Protex System specification documents to ensure completeness of information. Please note, no responsibility is assumed for errors or misinterpretations resulting from the information contained within this drawing. Details depicted are for illustration purposes only, and no liability is accepted for their use. Firth Steels reserves the right to modify details without notice. This drawing is the property of Firth Steels Ltd. Any reproduction without explicit written consent is prohibited. Firth Steels is committed to ongoing improvement. The details and data shared in this document are reflective of the current state as of the issue date. It is the duty of the recipients to ensure that the information in this document is still up-to-date at the time of its use.

Drawing Number  
**Protex-FWS03-2 60/15 End Lap Detail**

Fire Resistance  
**60 Minutes Integrity  
 15 Minutes Insulation**  
\*Contact Firth Steels technical for increased resistances technical@firth-steels.co.uk

Drawn by KP	Checked by TO	Date 16/10/2024
----------------	------------------	--------------------

Project Title PRX-FIREWALLS	Size A3	Revision A
--------------------------------	------------	---------------

<<< DO NOT SCALE FROM THIS DRAWING >>>