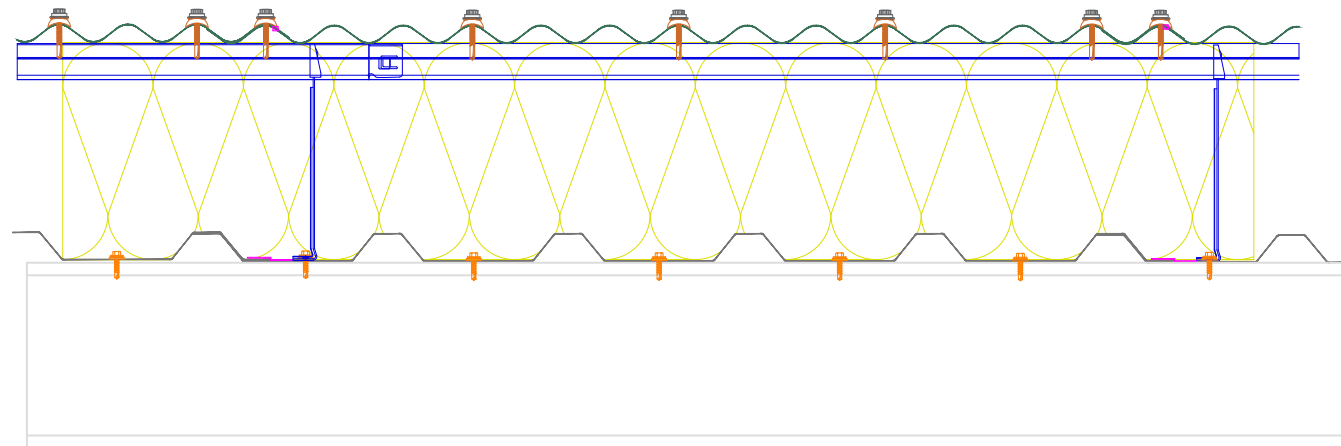


Total System Depth (mm)	Bracket / insulation Thickness (mm)	Thermal Performance (W/m <sup>2</sup> K)	Acoustic Performance RW (db)	System Weight (Kg/m <sup>2</sup> )
150	120	0.39	49	15.8
170	140	0.33	51	16.0
190	160	0.28	52	16.3
210	180	0.25	53	16.5
230	200	0.22	54	16.8
250	220	0.20	55	17.1
270	240	0.18	56	17.3
290	260	0.18	57	17.6
310	280	0.16	58	17.8
330	300	0.15	59	18.1
350	320	0.14	60	18.4
370	340	0.13	61	18.6
390	360	0.13	62	18.9
410	380	0.12	62	19.1
430	400	0.11	63	19.4

DIRECTION OF LAY  
←



**PROTEX APPROVED - SIDE LAP SEALANT**  
6mm \* 5mm BUTYL TAPE  
**LOCATION**  
CONTINUOUS RUN.  
POSITIONED WEATHER SIDE OF FIXING

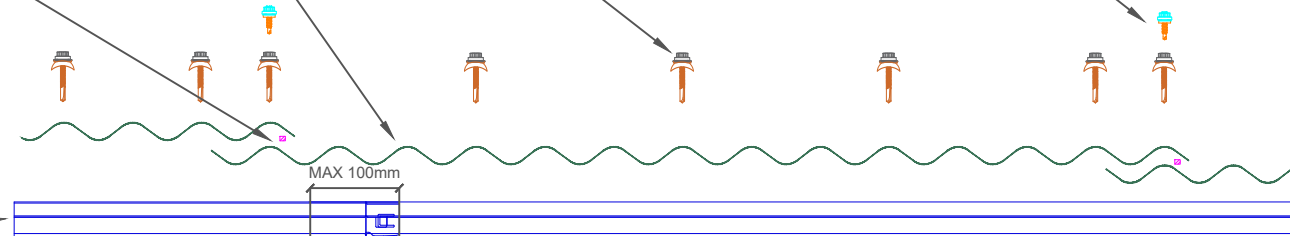
**SINUSOIDAL EXTERNAL ROOF PROFILE**  
GAUGE - 0.7mm  
COATING - PROTEX APPROVED

**PROTEX APPROVED - EXTERNAL MAIN FIXING**  
STAINLESS STEEL SELF DRILLING & SELF TAPPING  
PAINTED / MOULDED HEAD  
16mm Ø EDPM WASHER  
**PATTERN**  
SHEET ENDS & INTERMEDIATES - EVERY 4TH  
CROWN - 5 NO. FIXINGS (ENSURING FIX IN SIDE LAP)

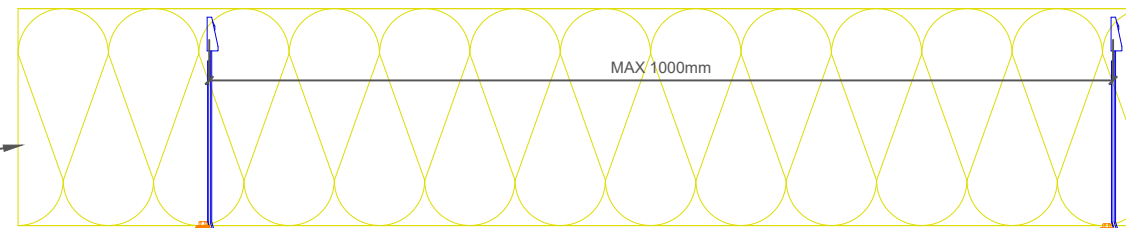
**PROTEX APPROVED - EXTERNAL STITCHER FIXING**  
STAINLESS STEEL SELF DRILLING & SELF TAPPING  
PAINTED / MOULDED HEAD  
16mm Ø EDPM WASHER  
**PATTERN**  
SIDE LAP - 450mm CENTRES

**PROTEX APPROVED - SPACER SYSTEM**  
BRACKET DEPTH TO SUIT U-VALUE  
CALCULATIONS  
MINIMUM DEPTH 120mm  
**PATTERN**  
MAX RAIL CENTRE'S 1800mm  
MAX BRACKET CENTRE'S 1000mm  
BRACKET CENTRE'S TO SUIT LOADING  
CALCULATIONS  
BRACKET MUST BE PLACED WITHIN 100mm  
OF MALE END OF SPACER SYSTEM  
JOINT AND BAR END

DIRECTION OF LAY  
←



**PROTEX APPROVED - GLASS FIBRE INSULATION**  
THICKNESS TO SUIT U-VALUE  
REQUIREMENT  
MINIMUM THICKNESS - 120mm  
FIRE CLASS A1 TO EN 13501-1  
MANUFACTURED IN ACCORDANCE WITH BS  
EN 13162  
(SUGGESTED THICKNESS TO BE >10% THAN SPACER SYSTEM DEPTH.)



**N1000WL INTERNAL LINER PROFILE**  
GAUGE - 0.7mm  
COATING - BRIGHT WHITE LINER

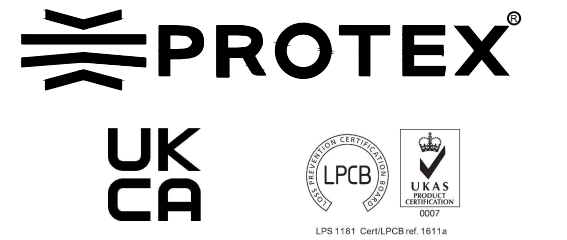
**PROTEX APPROVED - LINER SIDE LAP SEALANT**  
50mm \* 1mm BUTYL TAPE  
**LOCATION**  
CONTINUOUS RUN.  
POSITIONED CENTRAL OVER JOIN

**PROTEX APPROVED - LINER MAIN FIXING**  
STAINLESS STEEL SELF DRILLING & SELF TAPPING  
16mm Ø EDPM WASHER  
**PATTERN**  
SHEET ENDS - EVERY TROUGH - 5 NO. FIXINGS  
INTERMEDIATE SUPPORTS - ALTERNATE TROUGH - 3 NO. FIXINGS

**PROTEX APPROVED - BRACKET FIXING**  
STAINLESS STEEL SELF DRILLING & SELF TAPPING  
16mm Ø EDPM WASHER  
**PATTERN**  
AS PER LAYOUT CALCULATIONS

- INSTALLATION NOTES**
- FLASHING JOINTS SEALED WITH BUTYL
  - FLASHING JOINTS FIXED AT 100mm CENTRES (RIVET OR STITCH)
  - FLASHINGS FIXED AT 450mm CENTRES
  - BRACKET MUST BE POSITIONED WITHIN 100mm OF END OF BAR OR MALE END JOIN
  - NO IMPACT DRIVERS OR CLUTCHLESS DRILLS
  - NO CARBON FIXINGS

REV	DATE	DESCRIPTION



This draft drawing has been supplied by Firth Steels Ltd for guidance purposes only and is provided free of charge. It represents a suggested typical detail and should not be assumed as suitable for any specific project or application. It is essential to read this in conjunction with the Protex System specification documents to ensure completeness of information.  
Please note: no responsibility is assumed for errors or misinterpretations resulting from the information contained within this drawing. Details depicted are for illustration purposes only, and no liability is accepted for their use. Firth Steels reserves the right to modify details without notice. This drawing is the property of Firth Steels Ltd, any reproduction without explicit written consent is prohibited.  
Firth Steels is committed to ongoing improvement. The details and data shared in this document are reflective of the current state as of the issue date. It is the duty of the recipients to ensure that the information in this document is still up-to-date at the time of its use.

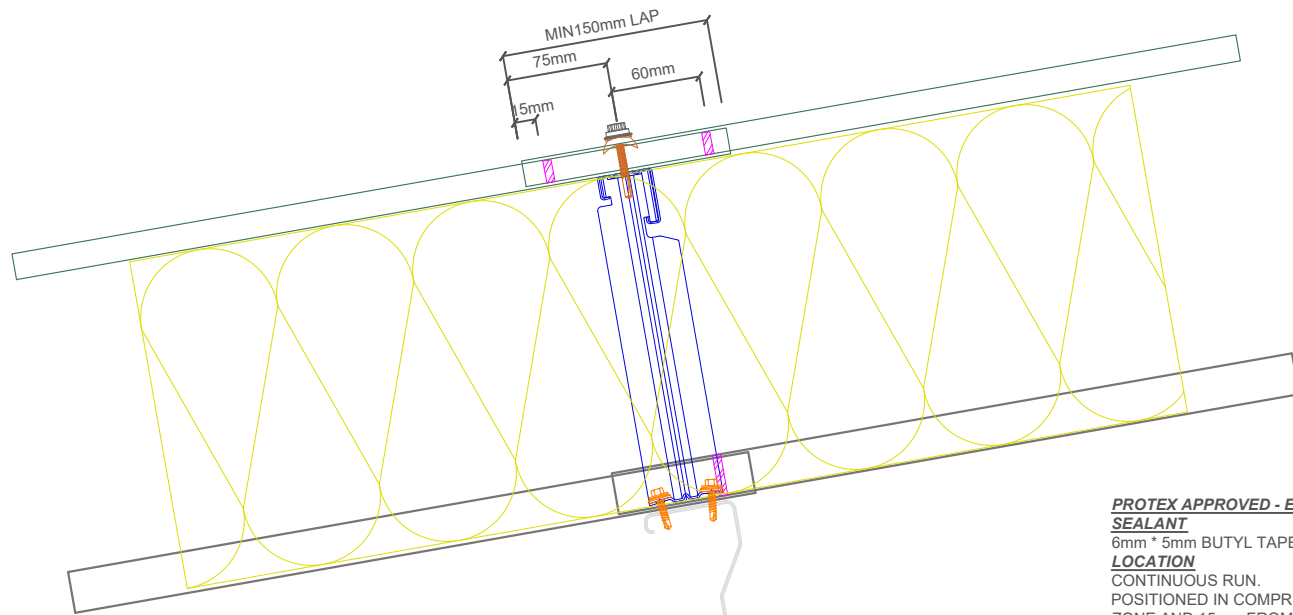
Drawing Number  
**Protex-RS03-1 Side Lap Detail**

Drawn by TO	Checked by KP	Date 24/09/2024
----------------	------------------	--------------------

Project Title PRX-RS-03	Size A3	Revision A
----------------------------	------------	---------------

<<< DO NOT SCALE FROM THIS DRAWING >>>

Total System Depth (mm)	Bracket / insulation Thickness (mm)	Thermal Performance (W/m <sup>2</sup> K)	Acoustic Performance RW (db)	System Weight (Kg/m <sup>2</sup> )
150	120	0.39	33	15.8
170	140	0.33	34	16.0
190	160	0.28	36	16.3
210	180	0.25	37	16.5
230	200	0.22	39	16.8
250	220	0.20	40	17.1
270	240	0.18	42	17.3
290	260	0.18	43	17.6
310	280	0.16	45	17.8
330	300	0.15	46	18.1
350	320	0.14	47	18.4
370	340	0.13	49	18.6
390	360	0.13	50	18.9
410	380	0.12	51	19.1
430	400	0.11	53	19.4



**PROTEX APPROVED - END LAP SEALANT**  
 6mm \* 5mm BUTYL TAPE  
**LOCATION**  
 CONTINUOUS RUN.  
 POSITIONED IN COMPRESSION ZONE AND 15mm FROM LAP END

**PROTEX APPROVED - EXTERNAL TAIL STITCHER FIXING**  
 STAINLESS STEEL SELF DRILLING & SELF TAPPING  
 PAINTED / MOULDED HEAD  
 16mm Ø EDPM WASHER  
**PATTERN**  
 SIDE LAP - 450mm CENTRES  
 50mm FROM END OF SHEET

**PROTEX APPROVED - EXTERNAL MAIN FIXING**  
 STAINLESS STEEL SELF DRILLING & SELF TAPPING  
 PAINTED / MOULDED HEAD  
 BAZ SEALING EDPM WASHER FOR SINUS PROFILE  
**PATTERN**  
 SHEET ENDS & INTERMEDIATES - EVERY 4TH CROWN - 5 NO. FIXINGS (ENSURING FIX IN SIDE LAP)

**SINUSOIDAL EXTERNAL ROOF PROFILE**  
 GAUGE - 0.7mm  
 COATING - PROTEX APPROVED  
 END LAP MIN 150mm

**PROTEX APPROVED - SPACER SYSTEM**  
 BRACKET DEPTH TO SUIT U-VALUE CALCULATIONS  
 MINIMUM DEPTH 120mm  
**PATTERN**  
 MAX RAIL CENTRE'S 1800mm  
 MAX BRACKET CENTRE'S 1000mm  
 BRACKET CENTRE'S TO SUIT LOADING CALCULATIONS  
 BRACKET MUST BE PLACED WITHIN 100mm OF MALE END OF SPACER SYSTEM JOINT AND BAR END

**PROTEX APPROVED - GLASS FIBRE INSULATION**  
 THICKNESS TO SUIT U-VALUE REQUIREMENT  
 MINIMUM THICKNESS - 120mm  
 FIRE CLASS A1 TO EN 13501-1  
 MANUFACTURED IN ACCORDANCE WITH BS EN 13162  
 (SUGGESTED THICKNESS TO BE >10% THAN SPACER SYSTEM DEPTH)

**N1000WL INTERNAL LINER PROFILE**  
 GAUGE - 0.7mm  
 COATING - BRIGHT WHITE LINER  
 MIN END LAP 100mm

**PROTEX APPROVED - LINER END LAP SEALANT**  
 4mm / 9mm \* 3mm BUTYL TAPE  
**LOCATION**  
 CONTINUOUS RUN.  
 POSITIONED 25mm FROM END

**PROTEX APPROVED - BRACKET FIXING**  
 STAINLESS STEEL SELF DRILLING & SELF TAPPING  
 16mm Ø EDPM WASHER  
**PATTERN**  
 AS PER LAYOUT CALCULATIONS

**PROTEX APPROVED - LINER MAIN FIXING**  
 STAINLESS STEEL SELF DRILLING & SELF TAPPING  
 16mm Ø EDPM WASHER  
**PATTERN**  
 SHEET ENDS - EVERY TROUGH - 5 NO. FIXINGS  
 INTERMEDIATE SUPPORTS - ALTERNATE TROUGH - 3 NO. FIXINGS

- INSTALLATION NOTES**
- FLASHING JOINTS SEALED WITH BUTYL
  - FLASHING JOINTS FIXED AT 100mm CENTRES (RIVET OR STITCH)
  - FLASHINGS FIXED AT 450mm CENTRES
  - BRACKET MUST BE POSITIONED WITHIN 100mm OF END OF BAR OR MALE END JOIN
  - NO IMPACT DRIVERS OR CLUTCHLESS DRILLS
  - NO CARBON FIXINGS

REV	DATE	DESCRIPTION



This draft drawing has been supplied by Firth Steels Ltd for guidance purposes only and is provided free of charge. It represents a suggested typical detail and should not be assumed as suitable for any specific project or application. It is essential to read this in conjunction with the Protex System specification documents to ensure completeness of information.  
 Please note: no responsibility is assumed for errors or misinterpretations resulting from the information contained within this drawing. Details depicted are for illustration purposes only, and no liability is accepted for their use. Firth Steels reserves the right to modify details without notice. This drawing is the property of Firth Steels Ltd, any reproduction without explicit written consent is prohibited.  
 Firth Steels is committed to ongoing improvement. The details and data shared in this document are reflective of the current state as of the issue date. It is the duty of the recipients to ensure that the information in this document is still up-to-date at the time of its use.

Drawing Number <b>Protex-RS03-2 End Lap Detail</b>			
Drawn by <b>TO</b>	Checked by <b>KP</b>	Date <b>24/09/2024</b>	
Project Title <b>PRX-RS-03</b>		Size <b>A3</b>	Revision <b>A</b>

<<< DO NOT SCALE FROM THIS DRAWING >>>

**PROTEX APPROVED - EXTERNAL MAIN FIXING 2**  
 STAINLESS STEEL SELF DRILLING & SELF TAPPING  
 PAINTED / MOULDED HEAD  
 16mm Ø EDPM WASHER  
**PATTERN**  
 UNDERNEATH FLASHINGS  
 SHEET ENDS - EVERY 4TH TROUGH - 5 NO. FIXINGS

**PROTEX APPROVED - RIDGE CAPPING STITCHER FIXING**  
 STAINLESS STEEL SELF DRILLING & SELF TAPPING  
 PAINTED / MOULDED HEAD  
 16mm Ø EDPM WASHER  
**PATTERN**  
 ALTERNATE CROWNS

**PROTEX APPROVED - EXTERNAL RIDGE FLASHINGS**  
 THICKNESS - 0.7mm  
 COATING - PROTEX APPROVED

**PROTEX APPROVED VENTED FOAM FILLER**  
 PROFILE - SINUSOIDAL  
 COLOUR - BLACK  
 VENT POSITIONED AT TOP  
**LOCATION**  
 75mm SET BACK FROM EDGE

**PROTEX APPROVED - VENTED FOAM FILLER SEALANT**  
 GUN GRADE BUTYL  
 APPROX 4mm DIAMETER BEAD  
**LOCATION**  
 CONTINUOUS RUN BOTTOM OF FOAM FILLER

**SINUSOIDAL EXTERNAL ROOF PROFILE**  
 GAUGE - 0.7mm  
 COATING - PROTEX APPROVED

**PROTEX APPROVED - SPACER SYSTEM**  
 BRACKET DEPTH TO SUIT U-VALUE CALCULATIONS  
 MINIMUM DEPTH 120mm  
**PATTERN**  
 MAX RAIL CENTRE'S 1800mm  
 MAX BRACKET CENTRE'S 1000mm  
 BRACKET CENTRE'S TO SUIT LOADING CALCULATIONS  
 BRACKET MUST BE PLACED WITHIN 100mm OF MALE END OF SPACER SYSTEM JOINT AND BAR END

**PROTEX APPROVED - GLASS FIBRE INSULATION**  
 TO BE POSITIONED CENTRALLY OVER RIDGE TO AVOID JUNCTION  
 THICKNESS TO SUIT U-VALUE REQUIREMENT  
 MINIMUM THICKNESS - 120mm  
 FIRE CLASS A1 TO EN 13501-1  
 MANUFACTURED IN ACCORDANCE WITH BS EN 13162  
 (SUGGESTED THICKNESS TO BE >10% THAN SPACER SYSTEM DEPTH)

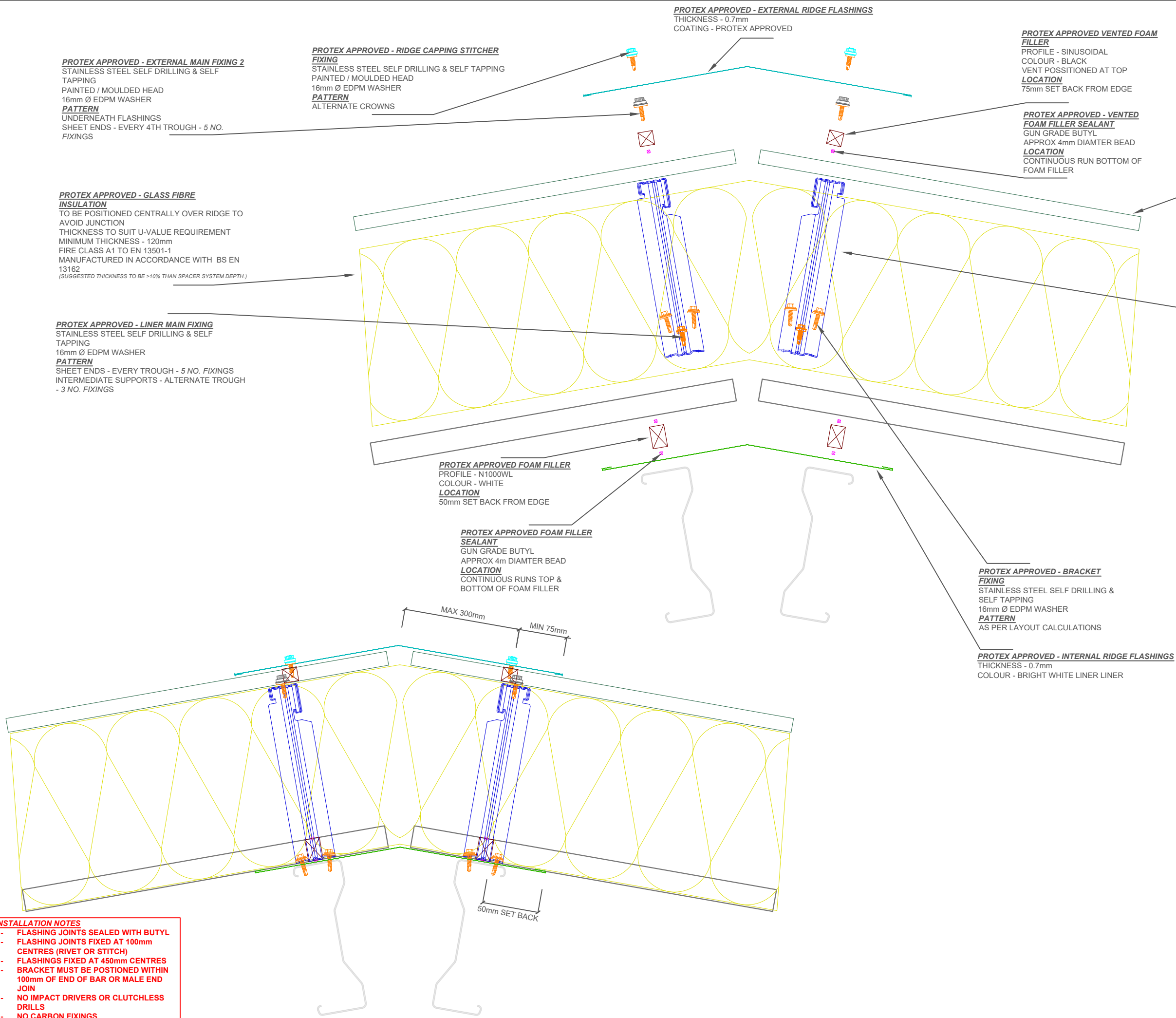
**PROTEX APPROVED - LINER MAIN FIXING**  
 STAINLESS STEEL SELF DRILLING & SELF TAPPING  
 16mm Ø EDPM WASHER  
**PATTERN**  
 SHEET ENDS - EVERY TROUGH - 5 NO. FIXINGS  
 INTERMEDIATE SUPPORTS - ALTERNATE TROUGH - 3 NO. FIXINGS

**PROTEX APPROVED FOAM FILLER**  
 PROFILE - N1000WL  
 COLOUR - WHITE  
**LOCATION**  
 50mm SET BACK FROM EDGE

**PROTEX APPROVED FOAM FILLER SEALANT**  
 GUN GRADE BUTYL  
 APPROX 4mm DIAMETER BEAD  
**LOCATION**  
 CONTINUOUS RUNS TOP & BOTTOM OF FOAM FILLER

**PROTEX APPROVED - BRACKET FIXING**  
 STAINLESS STEEL SELF DRILLING & SELF TAPPING  
 16mm Ø EDPM WASHER  
**PATTERN**  
 AS PER LAYOUT CALCULATIONS

**PROTEX APPROVED - INTERNAL RIDGE FLASHINGS**  
 THICKNESS - 0.7mm  
 COLOUR - BRIGHT WHITE LINER LINER



**INSTALLATION NOTES**

- FLASHING JOINTS SEALED WITH BUTYL
- FLASHING JOINTS FIXED AT 100mm CENTRES (RIVET OR STITCH)
- FLASHINGS FIXED AT 450mm CENTRES
- BRACKET MUST BE POSITIONED WITHIN 100mm OF END OF BAR OR MALE END JOIN
- NO IMPACT DRIVERS OR CLUTCHLESS DRILLS
- NO CARBON FIXINGS

REV	DATE	DESCRIPTION

**FirthSteels**  
 Firth Steels Ltd, Calderbank, River Street, Brighouse, West Yorkshire HD6 1LU  
 Technical@firth-steels.co.uk +44 1484 405940 Firth-steels.co.uk

SGS SGS SGS UKAS  
 PlanetMark

**PROTEX**  
 UKCA  
 LPCB  
 UKAS  
 LPS 1181 Cert/LPCB ref. 1611a

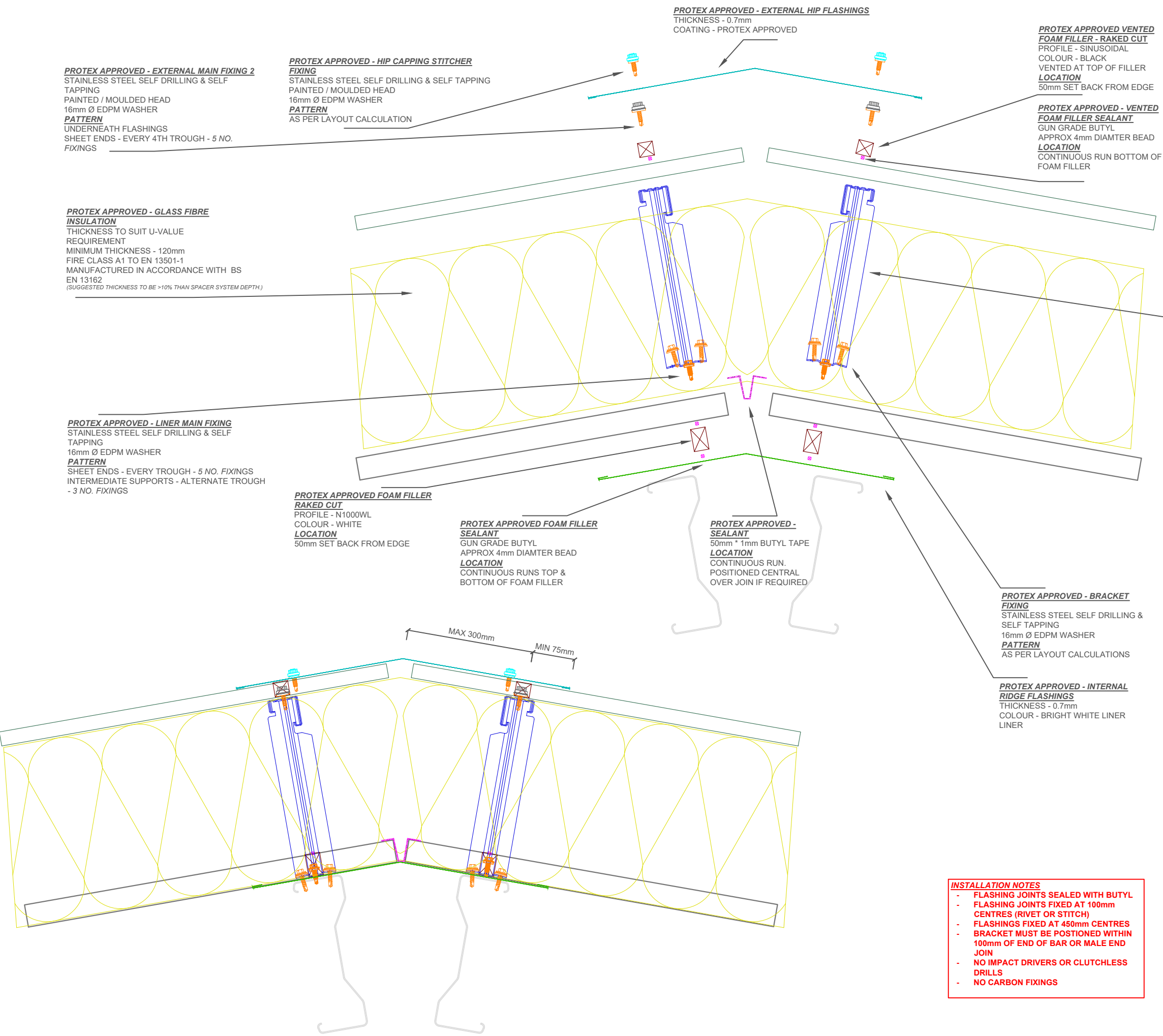
This draft drawing has been supplied by Firth Steels Ltd for guidance purposes only and is provided free of charge. It represents a suggested typical detail and should not be assumed as suitable for any specific project or application. It is essential to read this in conjunction with the Protex System specification documents to ensure completeness of information.  
 Please note, no responsibility is assumed for errors or misinterpretations resulting from the information contained within this drawing. Details depicted are for illustration purposes only, and no liability is accepted for their use. Firth Steels reserves the right to modify details without notice. This drawing is the property of Firth Steels Ltd, any reproduction without explicit written consent is prohibited.  
 Firth Steels is committed to ongoing improvement. The details and data shared in this document are reflective of the current state as of the issue date. It is the duty of the recipients to ensure that the information in this document is still up-to-date at the time of its use.

Drawing Number  
**Protex-RS03-3 Standard Ridge Flashing**

Drawn by TO	Checked by KP	Date 24/09/2024
----------------	------------------	--------------------

Project Title PRX-RS-03	Size A3	Revision A
----------------------------	------------	---------------

<<< DO NOT SCALE FROM THIS DRAWING >>>



**PROTEX APPROVED - EXTERNAL MAIN FIXING 2**  
 STAINLESS STEEL SELF DRILLING & SELF TAPPING  
 PAINTED / MOULDED HEAD  
 16mm Ø EDPM WASHER  
**PATTERN**  
 UNDERNEATH FLASHINGS  
 SHEET ENDS - EVERY 4TH TROUGH - 5 NO. FIXINGS

**PROTEX APPROVED - HIP CAPPING STITCHER FIXING**  
 STAINLESS STEEL SELF DRILLING & SELF TAPPING  
 PAINTED / MOULDED HEAD  
 16mm Ø EDPM WASHER  
**PATTERN**  
 AS PER LAYOUT CALCULATION

**PROTEX APPROVED - EXTERNAL HIP FLASHINGS**  
 THICKNESS - 0.7mm  
 COATING - PROTEX APPROVED

**PROTEX APPROVED VENTED FOAM FILLER - RAKED CUT**  
 PROFILE - SINUSOIDAL  
 COLOUR - BLACK  
 VENTED AT TOP OF FILLER  
**LOCATION**  
 50mm SET BACK FROM EDGE

**PROTEX APPROVED - VENTED FOAM FILLER SEALANT**  
 GUN GRADE BUTYL  
 APPROX 4mm DIAMTER BEAD  
**LOCATION**  
 CONTINUOUS RUN BOTTOM OF FOAM FILLER

**SINUSOIDAL EXTERNAL ROOF PROFILE**  
 GAUGE - 0.7mm  
 COATING - PROTEX APPROVED

**PROTEX APPROVED - GLASS FIBRE INSULATION**  
 THICKNESS TO SUIT U-VALUE REQUIREMENT  
 MINIMUM THICKNESS - 120mm  
 FIRE CLASS A1 TO EN 13501-1  
 MANUFACTURED IN ACCORDANCE WITH BS EN 13162  
 (SUGGESTED THICKNESS TO BE >10% THAN SPACER SYSTEM DEPTH.)

**PROTEX APPROVED - SPACER SYSTEM**  
 BRACKET DEPTH TO SUIT U-VALUE CALCULATIONS  
 MINIMUM DEPTH 120mm  
**PATTERN**  
 MAX RAIL CENTRE'S 1800mm  
 MAX BRACKET CENTRE'S 1000mm  
 BRACKET CENTRE'S TO SUIT LOADING CALCULATIONS  
 BRACKET MUST BE PLACED WITHIN 100mm OF MALE END OF SPACER SYSTEM JOINT AND BAR END

**PROTEX APPROVED - LINER MAIN FIXING**  
 STAINLESS STEEL SELF DRILLING & SELF TAPPING  
 16mm Ø EDPM WASHER  
**PATTERN**  
 SHEET ENDS - EVERY TROUGH - 5 NO. FIXINGS  
 INTERMEDIATE SUPPORTS - ALTERNATE TROUGH - 3 NO. FIXINGS

**PROTEX APPROVED FOAM FILLER RAKED CUT**  
 PROFILE - N1000WL  
 COLOUR - WHITE  
**LOCATION**  
 50mm SET BACK FROM EDGE

**PROTEX APPROVED FOAM FILLER SEALANT**  
 GUN GRADE BUTYL  
 APPROX 4mm DIAMTER BEAD  
**LOCATION**  
 CONTINUOUS RUNS TOP & BOTTOM OF FOAM FILLER

**PROTEX APPROVED - SEALANT**  
 50mm \* 1mm BUTYL TAPE  
**LOCATION**  
 CONTINUOUS RUN.  
 POSITIONED CENTRAL OVER JOIN IF REQUIRED

**PROTEX APPROVED - BRACKET FIXING**  
 STAINLESS STEEL SELF DRILLING & SELF TAPPING  
 16mm Ø EDPM WASHER  
**PATTERN**  
 AS PER LAYOUT CALCULATIONS

**PROTEX APPROVED - INTERNAL RIDGE FLASHINGS**  
 THICKNESS - 0.7mm  
 COLOUR - BRIGHT WHITE LINER LINER

MAX 300mm  
 MIN 75mm

- INSTALLATION NOTES**
- FLASHING JOINTS SEALED WITH BUTYL
  - FLASHING JOINTS FIXED AT 100mm CENTRES (RIVET OR STITCH)
  - FLASHINGS FIXED AT 450mm CENTRES
  - BRACKET MUST BE POSITIONED WITHIN 100mm OF END OF BAR OR MALE END JOIN
  - NO IMPACT DRIVERS OR CLUTCHLESS DRILLS
  - NO CARBON FIXINGS

REV	DATE	DESCRIPTION

**FirthSteels**<sup>®</sup>  
 Firth Steels Ltd, Calderbank, River Street, Brighouse, West Yorkshire HD6 1LU  
 Technical@firth-steels.co.uk +44 1484 405940 Firth-steels.co.uk

SGS  
 SGS  
 SGS  
 UKAS  
 PLANETMARK

**PROTEX**<sup>®</sup>

UKCA  
 LPCB  
 UKAS  
 LPS 1181 Cert.LPCB ref. 1611a

This draft drawing has been supplied by Firth Steels Ltd for guidance purposes only and is provided free of charge. It represents a suggested typical detail and should not be assumed as suitable for any specific project or application. It is essential to read this in conjunction with the Protex System specification documents to ensure completeness of information.  
 Please note, no responsibility is assumed for errors or misinterpretations resulting from the information contained within this drawing. Details depicted are for illustration purposes only, and no liability is accepted for their use. Firth Steels reserves the right to modify details without notice. This drawing is the property of Firth Steels Ltd, any reproduction without explicit written consent is prohibited.  
 Firth Steels is committed to ongoing improvement. The details and data shared in this document are reflective of the current state as of the issue date. It is the duty of the recipients to ensure that the information in this document is still up-to-date at the time of its use.

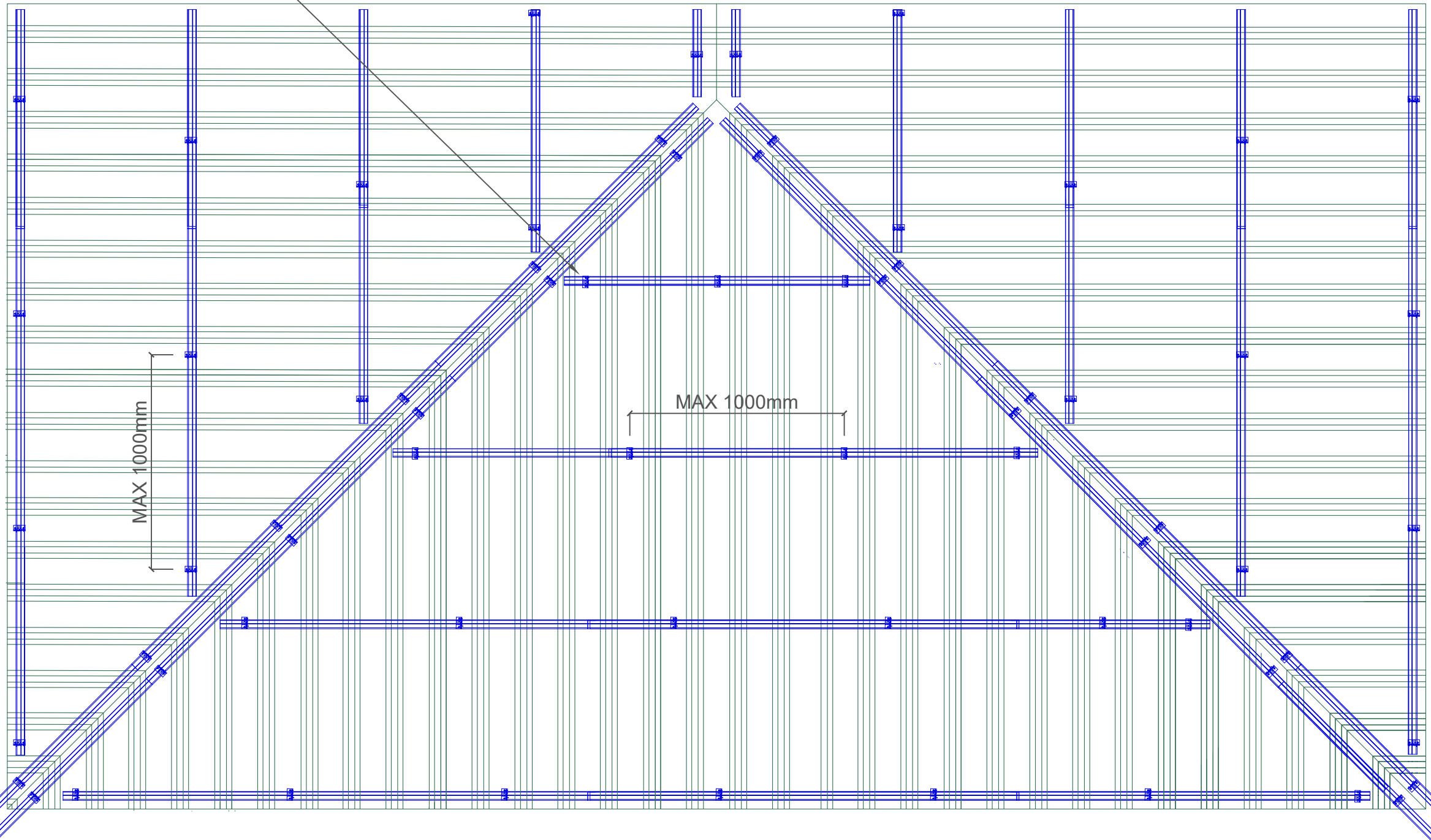
Drawing Number  
**Protex-RS03-4 Hip Ridge**

Drawn by TO  
 Checked by KP  
 Date 24/09/2024


Project Title PRX-RS-03  
 Size A3  
 Revision A

<<< DO NOT SCALE FROM THIS DRAWING >>>

**PROTEX APPROVED - SPACER SYSTEM**  
 BRACKET DEPTH TO SUIT U-VALUE CALCULATIONS  
 MINIMUM DEPTH 120mm  
**PATTERN**  
 MAX RAIL CENTRE'S 1800mm  
 MAX BRACKET CENTRE'S 1000mm  
 BRACKET CENTRE'S TO SUIT LOADING  
 CALCULATIONS  
 BRACKET MUST BE PLACED WITHIN 100mm OF MALE  
 END OF SPACER SYSTEM JOINT  
 BRACKET MUST BE 100mm WITHIN END OF BAR



- INSTALLATION NOTES**
- FLASHING JOINTS SEALED WITH BUTYL
  - FLASHING JOINTS FIXED AT 100mm CENTRES (RIVET OR STITCH)
  - FLASHINGS FIXED AT 450mm CENTRES
  - BRACKET MUST BE POSITIONED WITHIN 100mm OF END OF BAR OR MALE END JOIN
  - NO IMPACT DRIVERS OR CLUTCHLESS DRILLS
  - NO CARBON FIXINGS

REV	DATE	DESCRIPTION
 Firth Steels Ltd, Calderbank, River Street, Brighouse, West Yorkshire HD6 1LU Technical@firth-steels.co.uk +44 1484 405940 Firth-steels.co.uk		
		
    <small>LPS 1181 Curt/LPCB ref. 1611a</small>		
<p>This draft drawing has been supplied by Firth Steels Ltd for guidance purposes only and is provided free of charge. It represents a suggested typical detail and should not be assumed as suitable for any specific project or application. It is essential to read this in conjunction with the Protex System specification documents to ensure completeness of information.</p> <p>Please note, no responsibility is assumed for errors or misinterpretations resulting from the information contained within this drawing. Details depicted are for illustration purposes only, and no liability is accepted for their use. Firth Steels reserves the right to modify details without notice. This drawing is the property of Firth Steels Ltd, any reproduction without explicit written consent is prohibited.</p> <p>Firth Steels is committed to ongoing improvement. The details and data shared in this document are reflective of the current state as of the issue date. It is the duty of the recipients to ensure that the information in this document is still up-to-date at the time of its use.</p>		
Drawing Number <b>Protex-RS03-4.1 Hip Ridge Fixing detail</b>		
Drawn by <b>TO</b>	Checked by <b>KP</b>	Date <b>24/09/2024</b>
Project Title <b>PRX-RS-03</b>		Size <b>A3</b>
		Revision <b>A</b>
<<< DO NOT SCALE FROM THIS DRAWING >>>		

**PROTEX APPROVED - EXTERNAL MAIN FIXING 2**  
 STAINLESS STEEL SELF DRILLING & SELF TAPPING  
 PAINTED / MOULDED HEAD  
 16mm Ø EDPM WASHER  
**PATTERN**  
 UNDERNEATH FLASHINGS  
 SHEET ENDS - EVERY 4TH TROUGH - 5 NO. FIXINGS

**PROTEX APPROVED - RIDGE CAPPING STITCHER FIXING**  
 STAINLESS STEEL SELF DRILLING & SELF TAPPING  
 PAINTED / MOULDED HEAD  
 16mm Ø EDPM WASHER  
**PATTERN**  
 ALTERNATE CROWNS

**PROTEX APPROVED - EXTERNAL RIDGE FLASHINGS**  
 THICKNESS - 0.7mm  
 COATING - PROTEX APPROVED

**PROTEX APPROVED VENTED FOAM FILLER**  
 PROFILE - SINUSOIDAL  
 COLOUR - BLACK  
 VENT POSITIONED AT TOP  
**LOCATION**  
 75mm SET BACK FROM EDGE

**SINUSOIDAL EXTERNAL PROFILE**  
 GAUGE - 0.7mm  
 COATING - PROTEX APPROVED

**PROTEX APPROVED SPACER SYSTEM**  
 BRACKET DEPTH TO SUIT U-VALUE CALCULATIONS  
 MINIMUM DEPTH 120mm  
**PATTERN**  
 MAX RAIL CENTRE'S 1800mm  
 MAX BRACKET CENTRE'S 1000mm  
 BRACKET CENTRE'S TO SUIT LOADING CALCULATIONS  
 BRACKET MUST BE PLACED WITHIN 100mm OF MALE END OF SPACER SYSTEM JOINT AND BAR END

**PROTEX APPROVED - VENTED FOAM FILLER SEALANT**  
 GUN GRADE BUTYL  
 APPROX 4mm DIAMETER BEAD  
**LOCATION**  
 CONTINUOUS RUN BOTTOM OF FOAM FILLER

**PROTEX APPROVED - GLASS FIBRE INSULATION**  
 THICKNESS TO SUIT U-VALUE REQUIREMENT  
 MINIMUM THICKNESS - 120mm  
 FIRE CLASS A1 TO EN 13501-1  
 MANUFACTURED IN ACCORDANCE WITH BS EN 13162  
 (SUGGESTED THICKNESS TO BE >10% THAN SPACER SYSTEM DEPTH.)

**PROTEX APPROVED - LINER MAIN FIXING**  
 STAINLESS STEEL SELF DRILLING & SELF TAPPING  
 16mm Ø EDPM WASHER  
**PATTERN**  
 SHEET ENDS - EVERY TROUGH - 5 NO. FIXINGS  
 INTERMEDIATE SUPPORTS - ALTERNATE TROUGH - 3 NO. FIXINGS

**PROTEX APPROVED - LINER END LAP SEALANT**  
 4mm / 9mm \* 3mm BUTYL TAPE  
**LOCATION**  
 CONTINUOUS RUN.  
 POSITIONED 25mm FROM END

**PROTEX APPROVED - INTERNAL CURVED RIDGE**  
 THICKNESS - 0.7mm  
 COLOUR - BRIGHT WHITE LINER LINER  
 MIN PITCH - 4°

**PROTEX APPROVED - BRACKET FIXING**  
 STAINLESS STEEL SELF DRILLING & SELF TAPPING  
 16mm Ø EDPM WASHER  
**PATTERN**  
 AS PER LAYOUT CALCULATIONS

REV	DATE	DESCRIPTION

**FirthSteels**  
 Firth Steels Ltd, Calderbank, River Street, Brighouse, West Yorkshire HD6 1LU  
 Technical@firth-steels.co.uk +44 1484 405940 Firth-steels.co.uk

SGS SGS SGS UKAS PLANETMARK

**PROTEX**

UKCA LPCB UKAS

LPS 1181 CurtLPCB ref. 1611a

This draft drawing has been supplied by Firth Steels Ltd for guidance purposes only and is provided free of charge. It represents a suggested typical detail and should not be assumed as suitable for any specific project or application. It is essential to read this in conjunction with the Protex System specification documents to ensure completeness of information.

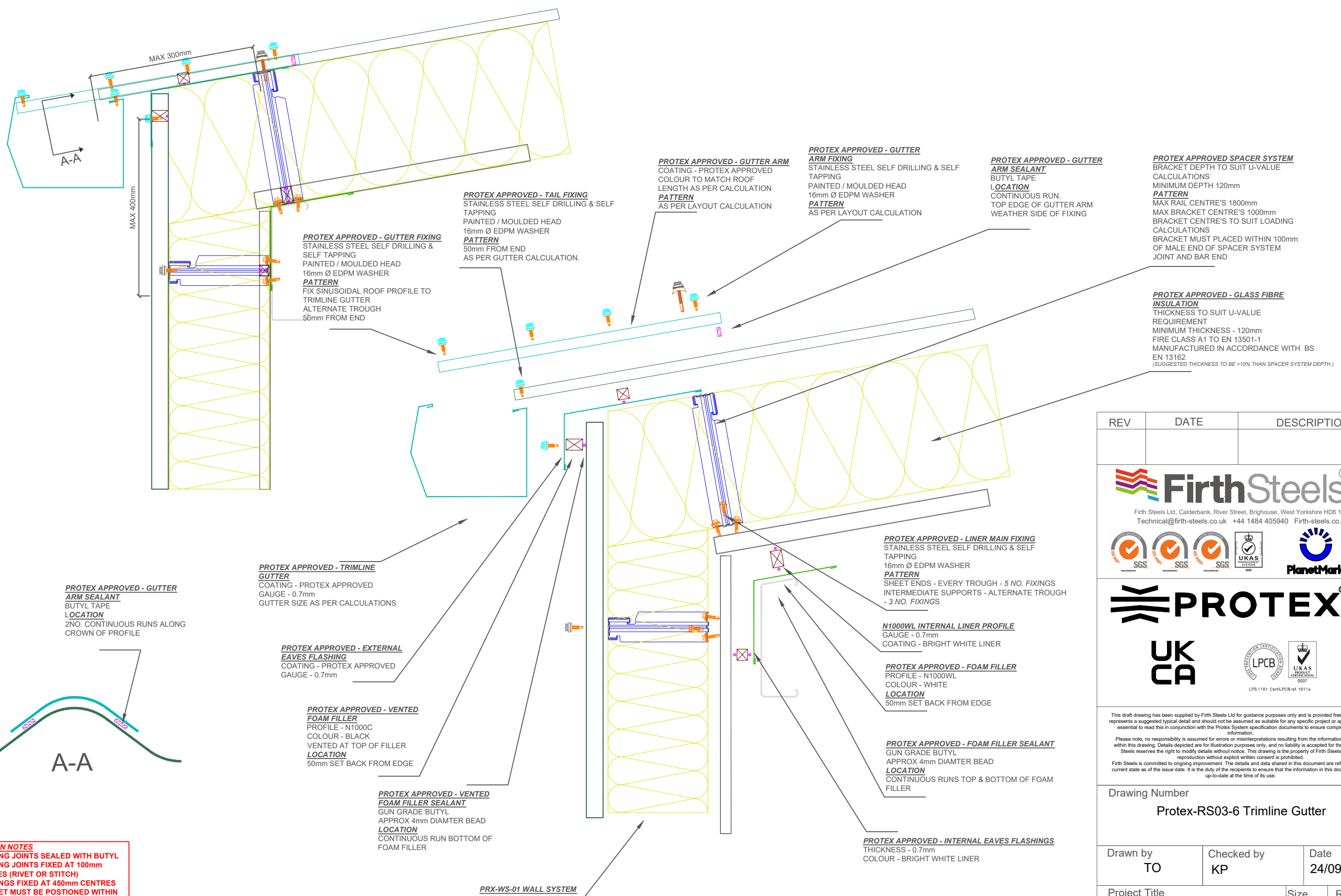
Please note, no responsibility is assumed for errors or misinterpretations resulting from the information contained within this drawing. Details depicted are for illustration purposes only, and no liability is accepted for their use. Firth Steels reserves the right to modify details without notice. This drawing is the property of Firth Steels Ltd, any reproduction without explicit written consent is prohibited.

Firth Steels is committed to ongoing improvement. The details and data shared in this document are reflective of the current state as of the issue date. It is the duty of the recipients to ensure that the information in this document is still up-to-date at the time of its use.

Drawing Number			
Protex-RS03-5 Cranked Ridge			
Drawn by	Checked by	Date	
TO	KP	24/09/2024	
Project Title			Size
PRX-RS-03			A3
			Revision
			A

- INSTALLATION NOTES**
- FLASHING JOINTS SEALED WITH BUTYL
  - FLASHING JOINTS FIXED AT 100mm CENTRES (RIVET OR STITCH)
  - FLASHINGS FIXED AT 450mm CENTRES
  - BRACKET MUST BE POSITIONED WITHIN 100mm OF END OF BAR OR MALE END JOIN
  - NO IMPACT DRIVERS OR CLUTCHLESS DRILLS
  - NO CARBON FIXINGS

<<< DO NOT SCALE FROM THIS DRAWING >>>



- INSTALLATION NOTES**
- FLASHING JOINTS SEALED WITH BUTYL
  - FLASHING JOINTS FIXED AT 100mm CENTRES (RIVET OR STITCH)
  - FLASHINGS FIXED AT 450mm CENTRES
  - BRACKET MUST BE POSITIONED WITHIN 100mm OF END OF BAR OR MALE END JOIN
  - NO IMPACT DRIVERS OR CLUTCHLESS DRILLS
  - NO CARBON FIXINGS

**PROTEX APPROVED - GUTTER ARM FIXING**  
 STAINLESS STEEL SELF DRILLING & SELF TAPPING  
 COLOUR TO MATCH ROOF  
 LENGTH AS PER CALCULATION  
**PATTERN**  
 AS PER LAYOUT CALCULATION

**PROTEX APPROVED - GUTTER ARM SEALANT**  
 BUTYL TAPE  
**LOCATION**  
 CONTINUOUS RUN, TOP EDGE OF GUTTER ARM WEATHER SIDE OF FIXING

**PROTEX APPROVED SPACER SYSTEM**  
 BRACKET DEPTH TO SUIT U-VALUE CALCULATIONS  
 MINIMUM DEPTH 120mm  
**PATTERN**  
 MAX RAIL CENTRE'S 1800mm  
 MAX BRACKET CENTRE'S 1000mm  
 BRACKET CENTRE'S TO SUIT LOADING CALCULATIONS  
 BRACKET MUST BE PLACED WITHIN 100mm OF MALE END OF SPACER SYSTEM JOINT AND BAR END

**PROTEX APPROVED - GLASS FIBRE INSULATION**  
 THICKNESS TO SUIT U-VALUE REQUIREMENT  
 MINIMUM THICKNESS - 120mm  
 FIRE CLASS A1 TO EN 13501-1  
 MANUFACTURED IN ACCORDANCE WITH BS EN 13162  
 (SUGGESTED THICKNESS TO BE >10% THAN SPACER SYSTEM DEPTH.)

**PROTEX APPROVED - GUTTER FIXING**  
 STAINLESS STEEL SELF DRILLING & SELF TAPPING  
 PAINTED / MOULDED HEAD  
 16mm Ø EDPM WASHER  
**PATTERN**  
 FIX SINUSOIDAL ROOF PROFILE TO TRIMLINE GUTTER  
 ALTERNATE TROUGH  
 50mm FROM END

**PROTEX APPROVED - TAIL FIXING**  
 STAINLESS STEEL SELF DRILLING & SELF TAPPING  
 PAINTED / MOULDED HEAD  
 16mm Ø EDPM WASHER  
**PATTERN**  
 50mm FROM END  
 AS PER GUTTER CALCULATION.

**PROTEX APPROVED - LINER MAIN FIXING**  
 STAINLESS STEEL SELF DRILLING & SELF TAPPING  
 16mm Ø EDPM WASHER  
**PATTERN**  
 SHEET ENDS - EVERY TROUGH - 5 NO. FIXINGS  
 INTERMEDIATE SUPPORTS - ALTERNATE TROUGH - 3 NO. FIXINGS

**N1000WL INTERNAL LINER PROFILE**  
 GAUGE - 0.7mm  
 COATING - BRIGHT WHITE LINER

**PROTEX APPROVED - FOAM FILLER**  
 PROFILE - N1000WL  
 COLOUR - WHITE  
**LOCATION**  
 50mm SET BACK FROM EDGE

**PROTEX APPROVED - FOAM FILLER SEALANT**  
 GUN GRADE BUTYL  
 APPROX 4mm DIAMTER BEAD  
**LOCATION**  
 CONTINUOUS RUNS TOP & BOTTOM OF FOAM FILLER

**PROTEX APPROVED - INTERNAL EAVES FLASHINGS**  
 THICKNESS - 0.7mm  
 COLOUR - BRIGHT WHITE LINER

**PROTEX APPROVED - TRIMLINE GUTTER**  
 COATING - PROTEX APPROVED  
 GAUGE - 0.7mm  
 GUTTER SIZE AS PER CALCULATIONS

**PROTEX APPROVED - EXTERNAL EAVES FLASHING**  
 COATING - PROTEX APPROVED  
 GAUGE - 0.7mm

**PROTEX APPROVED - VENTED FOAM FILLER**  
 PROFILE - N1000C  
 COLOUR - BLACK  
 VENTED AT TOP OF FILLER  
**LOCATION**  
 50mm SET BACK FROM EDGE

**PROTEX APPROVED - VENTED FOAM FILLER SEALANT**  
 GUN GRADE BUTYL  
 APPROX 4mm DIAMTER BEAD  
**LOCATION**  
 CONTINUOUS RUN BOTTOM OF FOAM FILLER

**PRX-WS-01 WALL SYSTEM**

REV	DATE	DESCRIPTION

**FirthSteels**  
 Firth Steels Ltd, Calderbank, River Street, Brighouse, West Yorkshire HD6 1LU  
 Technical@firth-steels.co.uk +44 1484 405940 Firth-steels.co.uk

SGS  
 SGS  
 SGS  
 UKAS  
 PLANETMARK

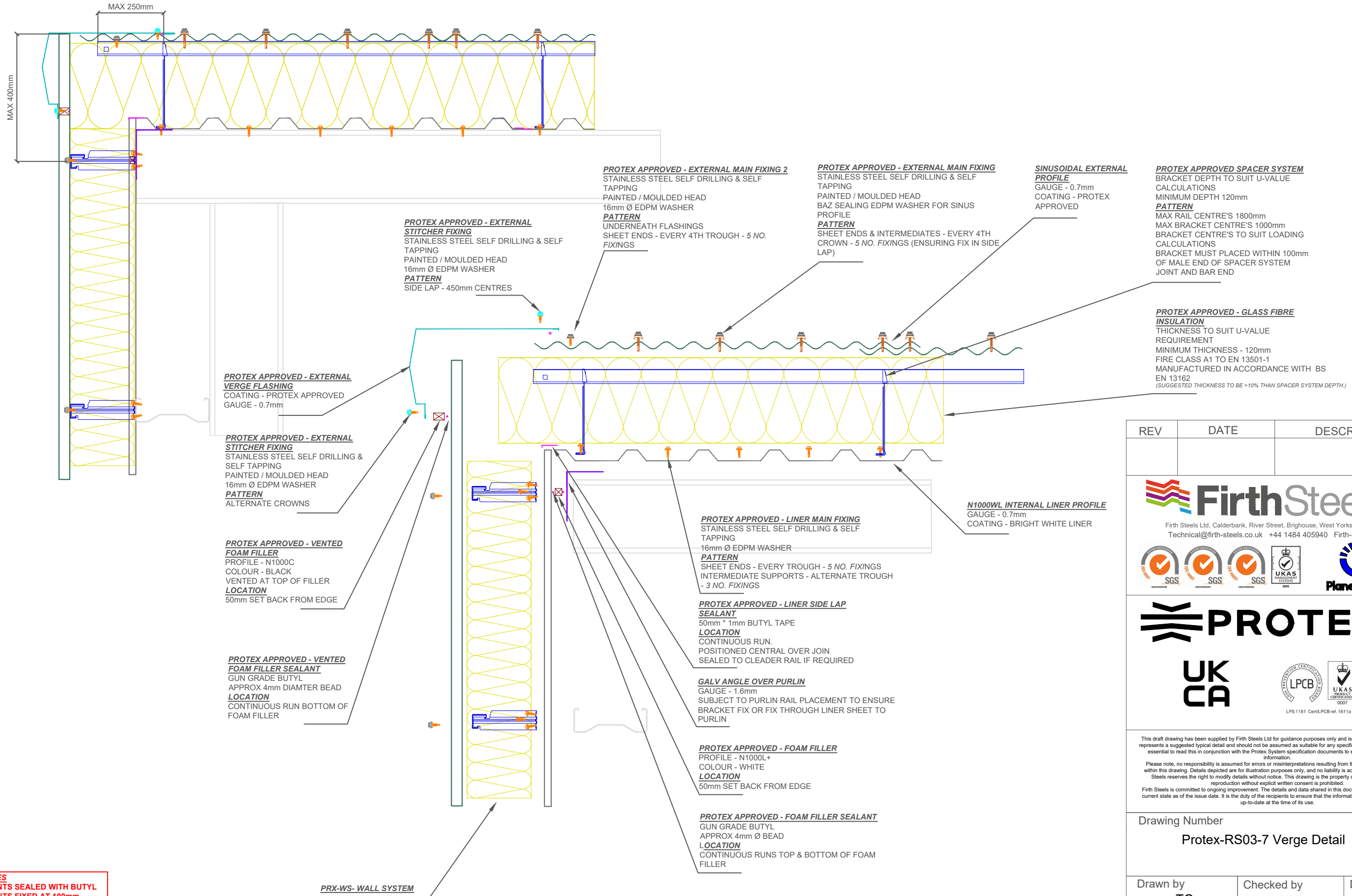
**PROTEX**  
 UKCA  
 LPCB  
 UKAS  
 LPS 1181 CertLPCB ref. 1611a

This draft drawing has been supplied by Firth Steels Ltd for guidance purposes only and is provided free of charge. It represents a suggested typical detail and should not be assumed as suitable for any specific project or application. It is essential to read this in conjunction with the Protex System specification documents to ensure completeness of information.  
 Please note, no responsibility is assumed for errors or misinterpretations resulting from the information contained within this drawing. Details depicted are for illustration purposes only, and no liability is accepted for their use. Firth Steels reserves the right to modify details without notice. This drawing is the property of Firth Steels Ltd, any reproduction without explicit written consent is prohibited.  
 Firth Steels is committed to ongoing improvement. The details and data shared in this document are reflective of the current state as of the issue date. It is the duty of the recipients to ensure that the information in this document is still up-to-date at the time of its use.

Drawing Number  
**Protex-RS03-6 Trimline Gutter**

Drawn by <b>TO</b>	Checked by <b>KP</b>	Date <b>24/09/2024</b>
Project Title <b>PRX-RS-03</b>		Size <b>A3</b>
Revision <b>A</b>		

<<< DO NOT SCALE FROM THIS DRAWING >>>



- INSTALLATION NOTES**
- FLASHING JOINTS SEALED WITH BUTYL
  - FLASHING JOINTS FIXED AT 100mm CENTRES (RIVET OR STITCH)
  - FLASHINGS FIXED AT 450mm CENTRES
  - BRACKET MUST BE POSITIONED WITHIN 100mm OF END OF BAR OR MALE END JOIN
  - NO IMPACT DRIVERS OR CLUTCHLESS DRILLS
  - NO CARBON FIXINGS

REV	DATE	DESCRIPTION

**FirthSteels**  
 Firth Steels Ltd, Calderbank, River Street, Brighouse, West Yorkshire HD6 1LU  
 Technical@firth-steels.co.uk +44 1484 405940 Firth-steels.co.uk

SGS  
 SGS  
 SGS  
 UKAS  
 PlanetMark

**PROTEX**  
 UKCA  
 LPCB  
 UKAS  
 LPS 1181 Cert/LPCB ref. 1611a

This draft drawing has been supplied by Firth Steels Ltd for guidance purposes only and is provided free of charge. It represents a suggested typical detail and should not be assumed as suitable for any specific project or application. It is essential to read this in conjunction with the Protex System specification documents to ensure completeness of information.  
 Please note: no responsibility is assumed for errors or misinterpretations resulting from the information contained within this drawing. Details depicted are for illustration purposes only, and no liability is accepted for their use. Firth Steels reserves the right to modify details without notice. This drawing is the property of Firth Steels Ltd, any reproduction without explicit written consent is prohibited.  
 Firth Steels is committed to ongoing improvement. The details and data shared in this document are reflective of the current state as of the issue date. It is the duty of the recipients to ensure that the information in this document is still up-to-date at the time of its use.

Drawing Number  
**Protex-RS03-7 Verge Detail**

Drawn by <b>TO</b>	Checked by <b>KP</b>	Date <b>24/09/2024</b>
Project Title <b>PRX-RS-03</b>	Size <b>A3</b>	Revision <b>A</b>

<<< DO NOT SCALE FROM THIS DRAWING >>>



**PROTEX APPROVED - EXTERNAL STITCHER FIXING**  
 STAINLESS STEEL SELF DRILLING & SELF TAPPING  
 PAINTED / MOULDED HEAD  
 16mm Ø EDPM WASHER  
**PATTERN**  
 SIDE LAP - 450mm CENTRES

**PROTEX APPROVED - EXTERNAL MAIN FIXING 2**  
 STAINLESS STEEL SELF DRILLING & SELF TAPPING  
 PAINTED / MOULDED HEAD  
 16mm Ø EDPM WASHER  
**PATTERN**  
 UNDERNEATH FLASHINGS  
 SHEET ENDS - EVERY 4TH TROUGH - 5 NO. FIXINGS

**PROTEX APPROVED - EXTERNAL VERGE FLASHING**  
 COATING - PROTEX APPROVED  
 GAUGE - 0.7mm  
 ALL JOINTS TO BE SEALED

**PROTEX APPROVED - VENTED FOAM FILLER**  
 PROFILE - N1000C  
 COLOUR - BLACK  
 VENTED AT TOP OF FILLER  
**LOCATION**  
 50mm SET BACK FROM EDGE

**PROTEX APPROVED - FOAM FILLER**  
 PROFILE - N1000L+  
 COLOUR - WHITE  
**LOCATION**  
 50mm SET BACK FROM EDGE

**PROTEX APPROVED - FOAM FILLER SEALANT**  
 GUN GRADE BUTYL  
 APPROX 4mm DIAMETER BEAD  
**LOCATION**  
 CONTINUOUS RUNS TOP & BOTTOM OF FOAM FILLER

**PROTEX APPROVED - EXTERNAL MAIN FIXING**  
 STAINLESS STEEL SELF DRILLING & SELF TAPPING  
 PAINTED / MOULDED HEAD  
 BAZ SEALING EDPM WASHER FOR SINUS PROFILE  
**PATTERN**  
 SHEET ENDS & INTERMEDIATES - EVERY 4TH CROWN - 5 NO. FIXINGS (ENSURING FIX IN SIDE LAP)

**SINUSOIDAL EXTERNAL PROFILE**  
 GAUGE - 0.7mm  
 COATING - PROTEX APPROVED

**PRX-WS-01 WALL SYSTEM**

**PROTEX APPROVED - LINER SIDE LAP SEALANT**  
 50mm\* 1mm BUTYL TAPE  
**LOCATION**  
 CONTINUOUS RUN. POSITIONED CENTRAL OVER JOIN

**PROTEX APPROVED - INTERNAL VERGE FLASHING**  
 THICKNESS - 0.7mm  
 COLOUR - BRIGHT WHITE LINER  
 COATING - PROTEX APPROVED  
 ALL JOINTS TO BE SEALED

**N1000WL INTERNAL LINER PROFILE**  
 GAUGE - 0.7mm  
 COATING - BRIGHT WHITE LINER

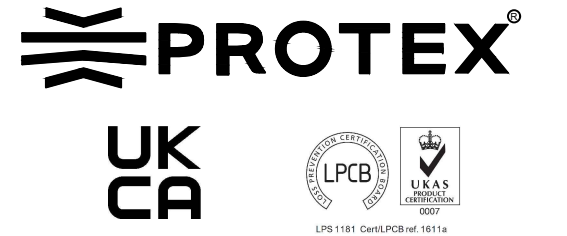
**PROTEX APPROVED - FLASHING SEALANT**  
 GUN GRADE BUTYL  
 APPROX 4mm DIAMETER BEAD  
**LOCATION**  
 CONTINUOUS RUN

**PROTEX APPROVED SPACER SYSTEM**  
 BRACKET DEPTH TO SUIT U-VALUE CALCULATIONS  
 MINIMUM DEPTH 120mm  
**PATTERN**  
 MAX RAIL CENTRE'S 1800mm  
 MAX BRACKET CENTRE'S 1000mm  
 BRACKET CENTRE'S TO SUIT LOADING CALCULATIONS  
 BRACKET MUST BE PLACED WITHIN 100mm OF MALE END OF SPACER SYSTEM JOINT AND BAR END

**PROTEX APPROVED - GLASS FIBRE INSULATION**  
 THICKNESS TO SUIT U-VALUE REQUIREMENT  
 MINIMUM THICKNESS - 120mm  
 FIRE CLASS A1 TO EN 13501-1  
 MANUFACTURED IN ACCORDANCE WITH BS EN 13162  
 (SUGGESTED THICKNESS TO BE >10% THAN SPACER SYSTEM DEPTH.)

- INSTALLATION NOTES**
- FLASHING JOINTS SEALED WITH BUTYL
  - FLASHING JOINTS FIXED AT 100mm CENTRES (RIVET OR STITCH)
  - FLASHINGS FIXED AT 450mm CENTRES
  - BRACKET MUST BE POSITIONED WITHIN 100mm OF END OF BAR OR MALE END JOIN
  - NO IMPACT DRIVERS OR CLUTCHLESS DRILLS
  - NO CARBON FIXINGS

REV	DATE	DESCRIPTION



This draft drawing has been supplied by Firth Steels Ltd for guidance purposes only and is provided free of charge. It represents a suggested typical detail and should not be assumed as suitable for any specific project or application. It is essential to read this in conjunction with the Protex System specification documents to ensure completeness of information.  
 Please note, no responsibility is assumed for errors or misinterpretations resulting from the information contained within this drawing. Details depicted are for illustration purposes only, and no liability is accepted for their use. Firth Steels reserves the right to modify details without notice. This drawing is the property of Firth Steels Ltd, any reproduction without explicit written consent is prohibited.  
 Firth Steels is committed to ongoing improvement. The details and data shared in this document are reflective of the current state as of the issue date. It is the duty of the recipients to ensure that the information in this document is still up-to-date at the time of its use.

Drawing Number  
**Protex-RS03-8 Parapet Upstand Verge**

Drawn by <b>TO</b>	Checked by <b>KP</b>	Date <b>24/09/2024</b>
-----------------------	-------------------------	---------------------------

Project Title <b>PRX-RS-03</b>	Size <b>A3</b>	Revision <b>A</b>
-----------------------------------	-------------------	----------------------

<<< DO NOT SCALE FROM THIS DRAWING >>>

**PROTEX APPROVED - EXTERNAL MAIN FIXING**  
 STAINLESS STEEL SELF DRILLING & SELF TAPPING  
 PAINTED / MOULDED HEAD  
 BAZ SEALING EDPM WASHER FOR SINUS PROFILE  
**PATTERN**  
 SHEET ENDS & INTERMEDIATES - EVERY 4TH CROWN - 5 NO. FIXINGS (ENSURING FIX IN SIDE LAP)

**SINUSOIDAL EXTERNAL PROFILE**  
 GAUGE - 0.7mm  
 COATING - PROTEX APPROVED

**PROTEX APPROVED SPACER SYSTEM**  
 BRACKET DEPTH TO SUIT U-VALUE CALCULATIONS  
 MINIMUM DEPTH 120mm  
**PATTERN**  
 MAX RAIL CENTRE'S 1800mm  
 MAX BRACKET CENTRE'S 1000mm  
 BRACKET CENTRE'S TO SUIT LOADING CALCULATIONS  
 BRACKET MUST BE PLACED WITHIN 100mm OF MALE END OF SPACER SYSTEM JOINT AND BAR END

**PROTEX APPROVED - BRACKET FIXING**  
 STAINLESS STEEL SELF DRILLING & SELF TAPPING  
 16mm Ø EDPM WASHER  
**PATTERN**  
 AS PER LAYOUT CALCULATIONS

**PROTEX APPROVED FOAM FILLER**  
 PROFILE - N1000WL  
 COLOUR - WHITE  
**LOCATION**  
 50mm SET BACK FROM EDGE

**PROTEX APPROVED - FOAM FILLER SEALANT**  
 GUN GRADE BUTYL  
 APPROX 4mm DIAMTER BEAD  
**LOCATION**  
 CONTINUOUS RUNS TOP & BOTTOM OF FOAM FILLER

**PROTEX APPROVED - LINER MAIN FIXING**  
 STAINLESS STEEL SELF DRILLING & SELF TAPPING  
 16mm Ø EDPM WASHER  
**PATTERN**  
 SHEET ENDS - EVERY TROUGH - 5 NO. FIXINGS  
 INTERMEDIATE SUPPORTS - ALTERNATE TROUGH - 3 NO. FIXINGS

**PROTEX APPROVED - GUTTER COVER FLASHINGS**  
 THICKNESS - 0.7mm  
 COATING - PROTEX APPROVED

**PROTEX APPROVED INTERNAL GUTTER FLASHING**  
 GAUGE - 0.7mm  
 COATING - BRIGHT WHITE LINER  
 REQUIRED IF CAVITY OVER 260mm  
**PATTERN**  
 450mm CENTRES AND AT EVERY FLASHING JOINT

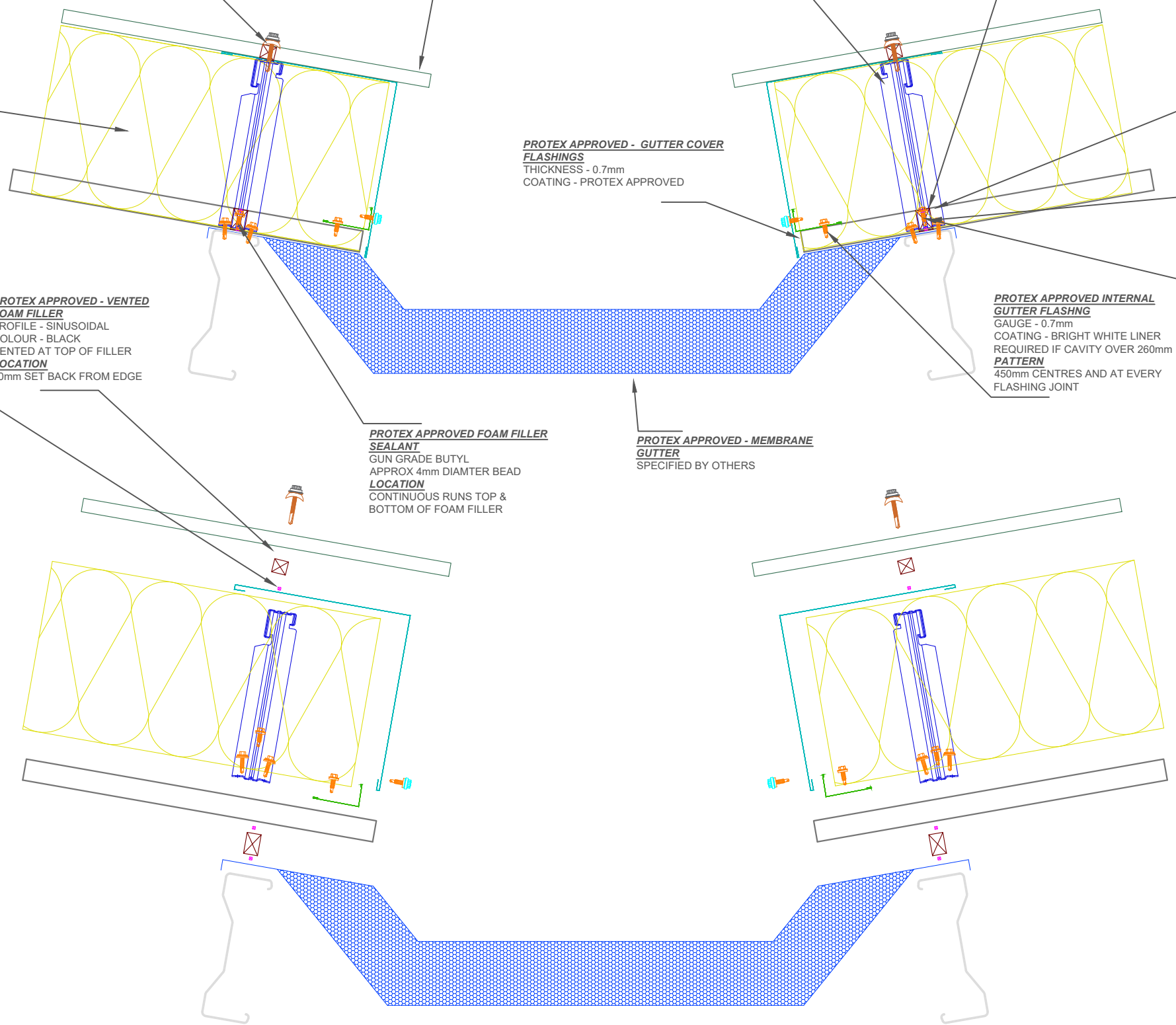
**PROTEX APPROVED - GLASS FIBRE INSULATION**  
 THICKNESS TO SUIT U-VALUE REQUIREMENT  
 MINIMUM THICKNESS - 120mm  
 FIRE CLASS A1 TO EN 13501-1  
 MANUFACTURED IN ACCORDANCE WITH BS EN 13162  
 (SUGGESTED THICKNESS TO BE >10% THAN SPACER SYSTEM DEPTH.)

**PROTEX APPROVED - VENTED FOAM FILLER SEALANT**  
 GUN GRADE BUTYL  
 APPROX 4mm DIAMTER BEAD  
**LOCATION**  
 CONTINUOUS RUN BOTTOM OF FOAM FILLER

**PROTEX APPROVED - VENTED FOAM FILLER**  
 PROFILE - SINUSOIDAL  
 COLOUR - BLACK  
 VENTED AT TOP OF FILLER  
**LOCATION**  
 50mm SET BACK FROM EDGE

**PROTEX APPROVED FOAM FILLER SEALANT**  
 GUN GRADE BUTYL  
 APPROX 4mm DIAMTER BEAD  
**LOCATION**  
 CONTINUOUS RUNS TOP & BOTTOM OF FOAM FILLER

**PROTEX APPROVED - MEMBRANE GUTTER**  
 SPECIFIED BY OTHERS



**INSTALLATION NOTES**

- FLASHING JOINTS SEALED WITH BUTYL
- FLASHING JOINTS FIXED AT 100mm CENTRES (RIVET OR STITCH)
- FLASHINGS FIXED AT 450mm CENTRES
- BRACKET MUST BE POSITIONED WITHIN 100mm OF END OF BAR OR MALE END JOINT
- NO IMPACT DRIVERS OR CLUTCHLESS DRILLS
- NO CARBON FIXINGS

REV	DATE	DESCRIPTION

**FirthSteels**<sup>®</sup>

Firth Steels Ltd, Calderbank, River Street, Brighouse, West Yorkshire HD6 1LU  
 Technical@firth-steels.co.uk +44 1484 405940 Firth-steels.co.uk



**PROTEX**<sup>®</sup>

**UKCA**



LPS 1181 Cert/LPCB ref. 1611a

This draft drawing has been supplied by Firth Steels Ltd for guidance purposes only and is provided free of charge. It represents a suggested typical detail and should not be assumed as suitable for any specific project or application. It is essential to read this in conjunction with the Protex System specification documents to ensure completeness of information.  
 Please note: no responsibility is assumed for errors or misinterpretations resulting from the information contained within this drawing. Details depicted are for illustration purposes only, and no liability is accepted for their use. Firth Steels reserves the right to modify details without notice. This drawing is the property of Firth Steels Ltd, any reproduction without explicit written consent is prohibited.  
 Firth Steels is committed to ongoing improvement. The details and data shared in this document are reflective of the current state as of the issue date. It is the duty of the recipients to ensure that the information in this document is still up-to-date at the time of its use.

Drawing Number  
**Protex-RS03-9 Valley Gutter**

Drawn by TO	Checked by KP	Date 24/09/2024
----------------	------------------	--------------------

Project Title PRX-RS-03	Size A3	Revision A
----------------------------	------------	---------------

<<< DO NOT SCALE FROM THIS DRAWING >>>

**PROTEX APPROVED - GLASS FIBRE INSULATION**  
 THICKNESS TO SUIT U-VALUE REQUIREMENT  
 MINIMUM THICKNESS - 120mm  
 FIRE CLASS A1 TO EN 13501-1  
 MANUFACTURED IN ACCORDANCE WITH BS EN 13162  
 (SUGGESTED THICKNESS TO BE >10% THAN SPACER SYSTEM DEPTH.)

**PROTEX APPROVED - EXTERNAL MAIN FIXING**  
 STAINLESS STEEL SELF DRILLING & SELF TAPPING  
 PAINTED / MOULDED HEAD  
 BAZ SEALING EDPM WASHER FOR SINUS PROFILE  
**PATTERN**  
 SHEET ENDS & INTERMEDIATES - EVERY 4TH  
 CROWN - 5 NO. FIXINGS (ENSURING FIX IN SIDE LAP)

**PROTEX APPROVED - VENTED FOAM FILLER SEALANT**  
 GUN GRADE BUTYL  
 APPROX 4mm DIAMETER BEAD  
**LOCATION**  
 CONTINUOUS RUN BOTTOM OF FOAM FILLER

**PROTEX APPROVED - GLASS FIBRE INSULATION**  
 THICKNESS TO SUIT U-VALUE REQUIREMENT  
 MINIMUM THICKNESS - 120mm  
 FIRE CLASS A1 TO EN 13501-1  
 MANUFACTURED IN ACCORDANCE WITH BS EN 13162  
 (SUGGESTED THICKNESS TO BE >10% THAN SPACER SYSTEM DEPTH.)

**PROTEX APPROVED - BRACKET FIXING**  
 STAINLESS STEEL SELF DRILLING & SELF TAPPING  
 16mm Ø EDPM WASHER  
**PATTERN**  
 AS PER LAYOUT CALCULATIONS

**PRX-WS-01 WALL SYSTEM**

**PROTEX APPROVED SPACER SYSTEM**  
 BRACKET DEPTH TO SUIT U-VALUE CALCULATIONS  
 MINIMUM DEPTH 120mm  
**PATTERN**  
 MAX RAIL CENTRE'S 1800mm  
 MAX BRACKET CENTRE'S 1000mm  
 BRACKET CENTRE'S TO SUIT LOADING CALCULATIONS  
 BRACKET MUST BE PLACED WITHIN 100mm OF MALE END OF SPACER SYSTEM JOINT AND BAR END

**PROTEX APPROVED - GUTTER COVER FLASHINGS**  
 THICKNESS - 0.7mm  
 COATING - PROTEX APPROVED

**PROTEX APPROVED SEALANT**  
 50mm \* 1mm BUTYL TAPE  
**LOCATION**  
 BETWEEN GUTTER AND RAIL

**PROTEX APPROVED INTERNAL PARAPET FLASHING**  
 GAUGE - 0.7mm  
 COATING - BRIGHT WHITE LINER  
 REQUIRED INTERNALLY TO CAP OFF INSULATION

**PROTEX APPROVED - MEMBRANE GUTTER**  
 SPECIFIED BY OTHERS

**PROTEX APPROVED - VENTED FOAM FILLER**  
 PROFILE - SINUSOIDAL  
 COLOUR - BLACK  
 VENTED AT TOP OF FILLER  
**LOCATION**  
 50mm SET BACK FROM EDGE

**PROTEX APPROVED - LINER MAIN FIXING**  
 STAINLESS STEEL SELF DRILLING & SELF TAPPING  
 16mm Ø EDPM WASHER  
**PATTERN**  
 SHEET ENDS - EVERY TROUGH - 5 NO. FIXINGS  
 INTERMEDIATE SUPPORTS - ALTERNATE TROUGH - 3 NO. FIXINGS

**PROTEX APPROVED FOAM FILLER SEALANT**  
 GUN GRADE BUTYL  
 APPROX 4mm DIAMETER BEAD  
**LOCATION**  
 CONTINUOUS RUNS TOP & BOTTOM OF FOAM FILLER

**PROTEX APPROVED FOAM FILLER**  
 PROFILE - N1000WL  
 COLOUR - WHITE  
**LOCATION**  
 50mm SET BACK FROM EDGE

- INSTALLATION NOTES**
- FLASHING JOINTS SEALED WITH BUTYL
  - FLASHING JOINTS FIXED AT 100mm CENTRES (RIVET OR STITCH)
  - FLASHINGS FIXED AT 450mm CENTRES
  - BRACKET MUST BE POSITIONED WITHIN 100mm OF END OF BAR OR MALE END JOIN
  - NO IMPACT DRIVERS OR CLUTCHLESS DRILLS
  - NO CARBON FIXINGS

REV	DATE	DESCRIPTION
-----	------	-------------



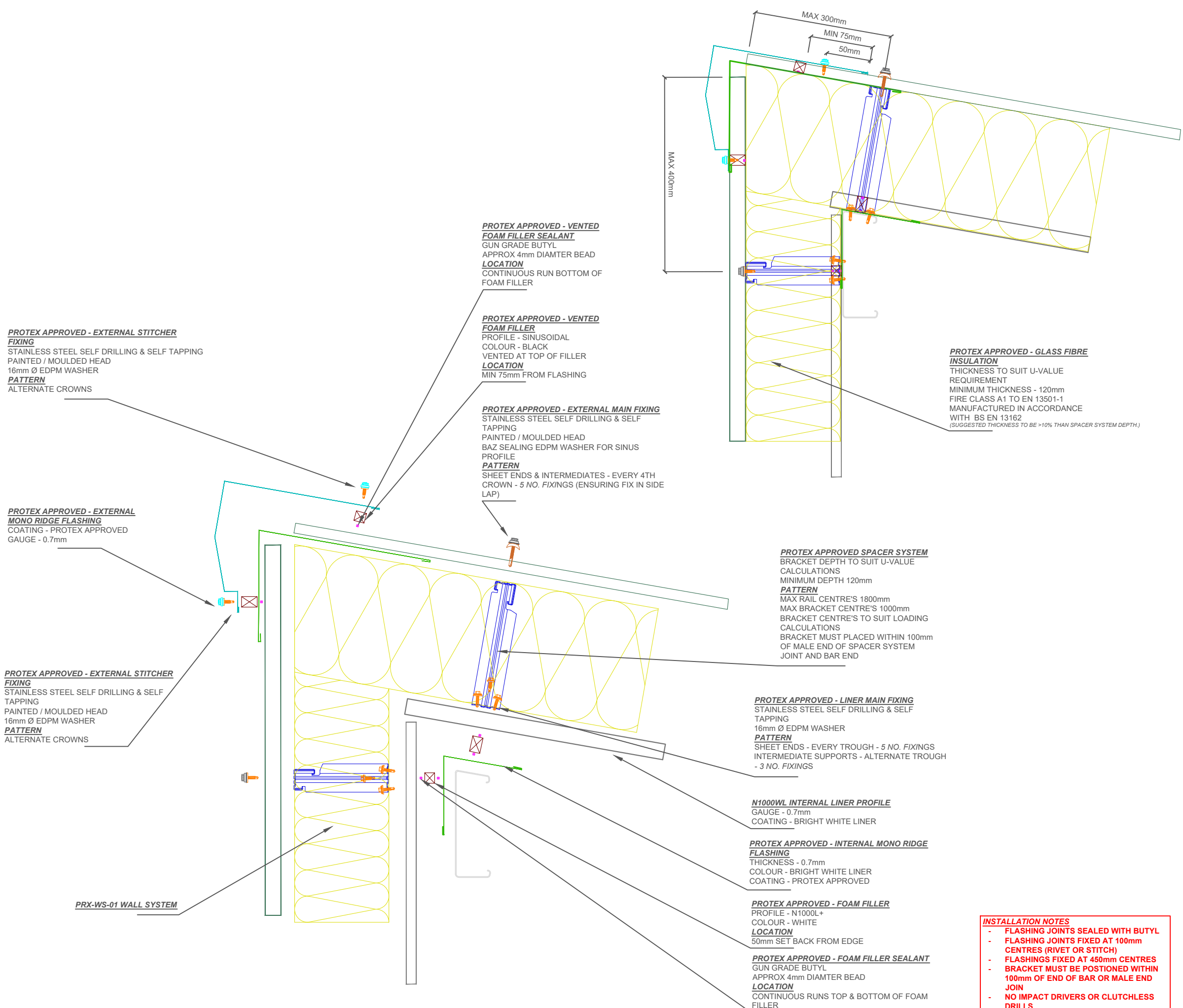
This draft drawing has been supplied by Firth Steels Ltd for guidance purposes only and is provided free of charge. It represents a suggested typical detail and should not be assumed as suitable for any specific project or application. It is essential to read this in conjunction with the Protex System specification documents to ensure completeness of information.  
 Please note, no responsibility is assumed for errors or misinterpretations resulting from the information contained within this drawing. Details depicted are for illustration purposes only, and no liability is accepted for their use. Firth Steels reserves the right to modify details without notice. This drawing is the property of Firth Steels Ltd, any reproduction without explicit written consent is prohibited.  
 Firth Steels is committed to ongoing improvement. The details and data shared in this document are reflective of the current state as of the issue date. It is the duty of the recipients to ensure that the information in this document is still up-to-date at the time of its use.

Drawing Number  
**Protex-RS03-10 Boundary Wall Parapet Gutter**

Drawn by TO Checked by KP Date 24/09/2024

Project Title PRX-RS-03 Size A3 Revision A

<<< DO NOT SCALE FROM THIS DRAWING >>>



**PROTEX APPROVED - EXTERNAL STITCHER FIXING**  
 STAINLESS STEEL SELF DRILLING & SELF TAPPING  
 PAINTED / MOULDED HEAD  
 16mm Ø EDPM WASHER  
**PATTERN**  
 ALTERNATE CROWNS

**PROTEX APPROVED - EXTERNAL MONO RIDGE FLASHING**  
 COATING - PROTEX APPROVED  
 GAUGE - 0.7mm

**PROTEX APPROVED - EXTERNAL STITCHER FIXING**  
 STAINLESS STEEL SELF DRILLING & SELF TAPPING  
 PAINTED / MOULDED HEAD  
 16mm Ø EDPM WASHER  
**PATTERN**  
 ALTERNATE CROWNS

**PROTEX APPROVED - VENTED FOAM FILLER SEALANT**  
 GUN GRADE BUTYL  
 APPROX 4mm DIAMTER BEAD  
**LOCATION**  
 CONTINUOUS RUN BOTTOM OF FOAM FILLER

**PROTEX APPROVED - VENTED FOAM FILLER**  
 PROFILE - SINUSOIDAL  
 COLOUR - BLACK  
 VENTED AT TOP OF FILLER  
**LOCATION**  
 MIN 75mm FROM FLASHING

**PROTEX APPROVED - EXTERNAL MAIN FIXING**  
 STAINLESS STEEL SELF DRILLING & SELF TAPPING  
 PAINTED / MOULDED HEAD  
 BAZ SEALING EDPM WASHER FOR SINUS  
 PROFILE  
**PATTERN**  
 SHEET ENDS & INTERMEDIATES - EVERY 4TH CROWN - 5 NO. FIXINGS (ENSURING FIX IN SIDE LAP)

**PROTEX APPROVED - GLASS FIBRE INSULATION**  
 THICKNESS TO SUIT U-VALUE REQUIREMENT  
 MINIMUM THICKNESS - 120mm  
 FIRE CLASS A1 TO EN 13501-1  
 MANUFACTURED IN ACCORDANCE WITH BS EN 13162  
 (SUGGESTED THICKNESS TO BE >10% THAN SPACER SYSTEM DEPTH.)

**PROTEX APPROVED SPACER SYSTEM**  
 BRACKET DEPTH TO SUIT U-VALUE CALCULATIONS  
 MINIMUM DEPTH 120mm  
**PATTERN**  
 MAX RAIL CENTRE'S 1800mm  
 MAX BRACKET CENTRE'S 1000mm  
 BRACKET CENTRE'S TO SUIT LOADING CALCULATIONS  
 BRACKET MUST PLACED WITHIN 100mm OF MALE END OF SPACER SYSTEM JOINT AND BAR END

**PROTEX APPROVED - LINER MAIN FIXING**  
 STAINLESS STEEL SELF DRILLING & SELF TAPPING  
 16mm Ø EDPM WASHER  
**PATTERN**  
 SHEET ENDS - EVERY TROUGH - 5 NO. FIXINGS  
 INTERMEDIATE SUPPORTS - ALTERNATE TROUGH - 3 NO. FIXINGS

**N1000WL INTERNAL LINER PROFILE**  
 GAUGE - 0.7mm  
 COATING - BRIGHT WHITE LINER

**PROTEX APPROVED - INTERNAL MONO RIDGE FLASHING**  
 THICKNESS - 0.7mm  
 COLOUR - BRIGHT WHITE LINER  
 COATING - PROTEX APPROVED

**PROTEX APPROVED - FOAM FILLER**  
 PROFILE - N1000L+  
 COLOUR - WHITE  
**LOCATION**  
 50mm SET BACK FROM EDGE

**PROTEX APPROVED - FOAM FILLER SEALANT**  
 GUN GRADE BUTYL  
 APPROX 4mm DIAMTER BEAD  
**LOCATION**  
 CONTINUOUS RUNS TOP & BOTTOM OF FOAM FILLER

- INSTALLATION NOTES**
- FLASHING JOINTS SEALED WITH BUTYL
  - FLASHING JOINTS FIXED AT 100mm CENTRES (RIVET OR STITCH)
  - FLASHINGS FIXED AT 450mm CENTRES
  - BRACKET MUST BE POSITIONED WITHIN 100mm OF END OF BAR OR MALE END JOIN
  - NO IMPACT DRIVERS OR CLUTCHLESS DRILLS
  - NO CARBON FIXINGS

REV	DATE	DESCRIPTION

**FirthSteels**<sup>®</sup>  
 Firth Steels Ltd, Calderbank, River Street, Brighouse, West Yorkshire HD6 1LU  
 Technical@firth-steels.co.uk +44 1484 405940 Firth-steels.co.uk

SGS SGS SGS UKAS PLANETMARK

**PROTEX**<sup>®</sup>

UKCA LPCB UKAS

LPS 1181 CurtLPCB ref. 1611a

This draft drawing has been supplied by Firth Steels Ltd for guidance purposes only and is provided free of charge. It represents a suggested typical detail and should not be assumed as suitable for any specific project or application. It is essential to read this in conjunction with the Protex System specification documents to ensure completeness of information.  
 Please note, no responsibility is assumed for errors or misinterpretations resulting from the information contained within this drawing. Details depicted are for illustration purposes only, and no liability is accepted for their use. Firth Steels reserves the right to modify details without notice. This drawing is the property of Firth Steels Ltd, any reproduction without explicit written consent is prohibited.  
 Firth Steels is committed to ongoing improvement. The details and data shared in this document are reflective of the current state as of the issue date. It is the duty of the recipients to ensure that the information in this document is still up-to-date at the time of its use.

Drawing Number  
**Protex-RS03-11 Mono Ridge**

Drawn by TO	Checked by KP	Date 24/09/2024
----------------	------------------	--------------------

Project Title PRX-RS-03	Size A3	Revision A
----------------------------	------------	---------------

<<< DO NOT SCALE FROM THIS DRAWING >>>

# TWIN SKIN PARAPET

**PROTEX APPROVED - EXTERNAL STITCHER**  
**FIXING**  
 STAINLESS STEEL SELF DRILLING & SELF TAPPING  
 PAINTED / MOULDED HEAD  
 16mm Ø EDPM WASHER  
**PATTERN**  
 EITHER SIDE OF BUTT STRAP  
 75 - 100mm CENTRES

**PARAPET CAPPING - BUTT STRAP**  
 GAUGE - 1.2mm MINIMUM

**PROTEX APPROVED - VENTED FOAM FILLER SEALANT**  
 GUN GRADE BUTYL  
 APPROX 4mm DIAMETER BEAD  
**LOCATION**  
 CONTINUOUS RUN BOTTOM OF FOAM FILLER

**PROTEX APPROVED - VENTED FOAM FILLER**  
 PROFILE - N1000C  
 COLOUR - BLACK  
 VENTED AT TOP OF FILLER  
**LOCATION**  
 50mm SET BACK FROM EDGE

**PROTEX APPROVED - FOAM FILLER**  
 PROFILE - N1000L+  
 COLOUR - WHITE  
**LOCATION**  
 50mm SET BACK FROM EDGE

**PROTEX APPROVED - FOAM FILLER SEALANT**  
 GUN GRADE BUTYL  
 APPROX 4mm DIAMETER BEAD  
**LOCATION**  
 CONTINUOUS RUNS TOP & BOTTOM OF FOAM FILLER

**PROTEX APPROVED SPACER SYSTEM**  
 BRACKET DEPTH TO SUIT U-VALUE  
 CALCULATIONS  
 MINIMUM DEPTH 120mm  
**PATTERN**  
 MAX RAIL CENTRE'S 1800mm  
 MAX BRACKET CENTRE'S 1000mm  
 BRACKET CENTRE'S TO SUIT LOADING  
 CALCULATIONS  
 BRACKET MUST BE PLACED WITHIN 100mm  
 OF MALE END OF SPACER SYSTEM  
 JOINT AND BAR END

**PARAPET SECONDARY SUPPORT**  
 STRUCTURAL STEEL ANGLE SUPPORT  
 AS PER LAYOUT DESIGN

# SINGLE SKIN PARAPET

**PARAPET SECONDARY SUPPORT**  
 STRUCTURAL STEEL SUPPORT  
 AS PER LAYOUT DESIGN

**PROTEX APPROVED - EXTERNAL PARAPET CAPPING FLASHING**  
 COATING - PROTEX APPROVED  
 GAUGE - 0.7mm

**PROTEX APPROVED - EXTERNAL STITCHER**  
**FIXING**  
 STAINLESS STEEL SELF DRILLING & SELF TAPPING  
 PAINTED / MOULDED HEAD  
 16mm Ø EDPM WASHER  
**PATTERN**  
 ALTERNATE CROWNS

**PROTEX APPROVED - GLASS FIBRE INSULATION**  
 THICKNESS TO SUIT U-VALUE  
 REQUIREMENT  
 MINIMUM THICKNESS - 120mm  
 FIRE CLASS A1 TO EN 13501-1  
 MANUFACTURED IN ACCORDANCE WITH BS EN 13162  
 (SUGGESTED THICKNESS TO BE >10% THAN SPACER SYSTEM DEPTH.)

**PROTEX APPROVED INTERNAL PARAPET FLASHING**  
 GAUGE - 0.7mm  
 COATING - BRIGHT WHITE LINER  
 REQUIRED INTERNALLY TO CAP OFF INSULATION

- INSTALLATION NOTES**
- FLASHING JOINTS SEALED WITH BUTYL
  - FLASHING JOINTS FIXED AT 100mm CENTRES (RIVET OR STITCH)
  - FLASHINGS FIXED AT 450mm CENTRES
  - BRACKET MUST BE POSITIONED WITHIN 100mm OF END OF BAR OR MALE END JOIN
  - NO IMPACT DRIVERS OR CLUTCHLESS DRILLS
  - NO CARBON FIXINGS

REV	DATE	DESCRIPTION



This draft drawing has been supplied by Firth Steels Ltd for guidance purposes only and is provided free of charge. It represents a suggested typical detail and should not be assumed as suitable for any specific project or application. It is essential to read this in conjunction with the Protex System specification documents to ensure completeness of information.  
 Please note: no responsibility is assumed for errors or misinterpretations resulting from the information contained within this drawing. Details depicted are for illustration purposes only, and no liability is accepted for their use. Firth Steels reserves the right to modify details without notice. This drawing is the property of Firth Steels Ltd, any reproduction without explicit written consent is prohibited.  
 Firth Steels is committed to ongoing improvement. The details and data shared in this document are reflective of the current state as of the issue date. It is the duty of the recipients to ensure that the information in this document is still up-to-date at the time of its use.

Drawing Number  
**Protex-RS03-12 Parapet Capping**

Drawn by <b>TO</b>	Checked by <b>KP</b>	Date <b>24/09/2024</b>
-----------------------	-------------------------	---------------------------

Project Title <b>PRX-RS-03</b>	Size <b>A3</b>	Revision <b>A</b>
-----------------------------------	-------------------	----------------------

<<< DO NOT SCALE FROM THIS DRAWING >>>

**PROTEX APPROVED - EXTERNAL MAIN FIXING**  
 STAINLESS STEEL SELF DRILLING & SELF TAPPING  
 PAINTED / MOULDED HEAD  
 BAZ SEALING EDPM WASHER FOR SINUS PROFILE  
**PATTERN**  
 SHEET ENDS & INTERMEDIATES - EVERY 4TH  
 CROWN - 5 NO. FIXINGS (ENSURING FIX IN SIDE LAP)

**PROTEX APPROVED - GLASS FIBRE INSULATION**  
 THICKNESS TO SUIT U-VALUE REQUIREMENT  
 MINIMUM THICKNESS - 120mm  
 FIRE CLASS A1 TO EN 13501-1  
 MANUFACTURED IN ACCORDANCE WITH BS EN 13162  
 (SUGGESTED THICKNESS TO BE >10% THAN SPACER SYSTEM DEPTH.)

**PROTEX APPROVED SPACER SYSTEM**  
 BRACKET DEPTH TO SUIT U-VALUE CALCULATIONS  
 MINIMUM DEPTH 120mm  
**PATTERN**  
 MAX RAIL CENTRE'S 1800mm  
 MAX BRACKET CENTRE'S 1000mm  
 BRACKET CENTRE'S TO SUIT LOADING CALCULATIONS  
 BRACKET MUST BE PLACED WITHIN 100mm OF MALE END OF SPACER SYSTEM JOINT AND BAR END

**DEKTITE - PIPE EDPM PIPE SEAL**

**PROTEX APPROVED - EXTERNAL STITCHER FIXING**  
 STAINLESS STEEL SELF DRILLING & SELF TAPPING  
 PAINTED / MOULDED HEAD  
 16mm Ø EDPM WASHER  
**PATTERN**  
 AS PER DEKTITE SPECIFICATIONS

**PROTEX APPROVED - EXTERNAL SOAKER FLASHING**  
 COATING - PROTEX APPROVED  
 SOAKER TO BE FIT UNDERNEATH RIDGE  
 FLASHING AND SEALED WITH 6\*5mm BUTYL STRIP

**PROTEX APPROVED - EXTERNAL STITCHER FIXING**  
 STAINLESS STEEL SELF DRILLING & SELF TAPPING  
 PAINTED / MOULDED HEAD  
 16mm Ø EDPM WASHER  
**PATTERN**  
 ALTERNATE CROWNS

**PROTEX APPROVED - VENTED FOAM FILLER SEALANT**  
 GUN GRADE BUTYL  
 APPROX 4mm DIAMTER BEAD  
**LOCATION**  
 CONTINUOUS RUN BOTTOM OF FOAM FILLER

**PROTEX APPROVED - VENTED FOAM FILLER**  
 PROFILE - SINUSOIDAL  
 COLOUR - BLACK  
 VENTED AT TOP OF FILLER  
**LOCATION**  
 50mm SET BACK FROM EDGE

**PROTEX APPROVED - EXTERNAL RIDGE FLASHINGS**  
 THICKNESS - 0.7mm  
 COATING - PROTEX APPROVED

**PROTEX APPROVED - EXTERNAL MAIN FIXING 2**  
 STAINLESS STEEL SELF DRILLING & SELF TAPPING  
 PAINTED / MOULDED HEAD  
 16mm Ø EDPM WASHER  
**PATTERN**  
 UNDERNEATH FLASHINGS  
 SHEET ENDS - EVERY 4TH TROUGH - 5 NO. FIXINGS

**PROTEX APPROVED - FOAM FILLER**  
 PROFILE - N1000WL  
 COLOUR - WHITE  
**LOCATION**  
 50mm SET BACK FROM EDGE

**PROTEX APPROVED - FOAM FILLER SEALANT**  
 GUN GRADE BUTYL  
 APPROX 4mm DIAMTER BEAD  
**LOCATION**  
 CONTINUOUS RUNS TOP & BOTTOM OF FOAM FILLER

**PROTEX APPROVED - BUTYL SEALANT**  
 6\*5mm BUTYL STRIP SEALANT  
 POSITIONED AROUND COLLAR TOP AND BOTTOM

**PROTEX APPROVED - INTERNAL COLLAR FLASHING**  
 THICKNESS - 0.7mm  
 COLOUR - BRIGHT WHITE LINER  
 COATING - PROTEX APPROVED

**PROTEX APPROVED - EXTERNAL SOAKER FLASHING**  
 COATING - PROTEX APPROVED  
 SOAKER TO BE FIT UNDERNEATH RIDGE  
 FLASHING AND SEALED WITH 6\*5mm BUTYL STRIP

- INSTALLATION NOTES**
- FLASHING JOINTS SEALED WITH BUTYL
  - FLASHING JOINTS FIXED AT 100mm CENTRES (RIVET OR STITCH)
  - FLASHINGS FIXED AT 450mm CENTRES
  - BRACKET MUST BE POSITIONED WITHIN 100mm OF END OF BAR OR MALE END JOIN
  - NO IMPACT DRIVERS OR CLUTCHLESS DRILLS
  - NO CARBON FIXINGS

REV	DATE	DESCRIPTION

**FirthSteels**<sup>®</sup>

Firth Steels Ltd, Calderbank, River Street, Brighouse, West Yorkshire HD6 1LU  
 Technical@firth-steels.co.uk +44 1484 405940 Firth-steels.co.uk



**PROTEX**<sup>®</sup>

**UKCA**



LPS 1181 Cert/LPCB ref. 1611a

This draft drawing has been supplied by Firth Steels Ltd for guidance purposes only and is provided free of charge. It represents a suggested typical detail and should not be assumed as suitable for any specific project or application. It is essential to read this in conjunction with the Protex System specification documents to ensure completeness of information.

Please note, no responsibility is assumed for errors or misinterpretations resulting from the information contained within this drawing. Details depicted are for illustration purposes only, and no liability is accepted for their use. Firth Steels reserves the right to modify details without notice. This drawing is the property of Firth Steels Ltd, any reproduction without explicit written consent is prohibited.

Firth Steels is committed to ongoing improvement. The details and data shared in this document are reflective of the current state as of the issue date. It is the duty of the recipients to ensure that the information in this document is still up-to-date at the time of its use.

Drawing Number  
**Protex-RS03-13 Circular Penetration**

Drawn by <b>TO</b>	Checked by <b>KP</b>	Date <b>24/09/2024</b>
-----------------------	-------------------------	---------------------------

Project Title <b>PRX-RS-03</b>	Size <b>A3</b>	Revision <b>A</b>
-----------------------------------	-------------------	----------------------

<<< DO NOT SCALE FROM THIS DRAWING >>>

**PROTEX APPROVED - EXTERNAL MAIN FIXING**  
 STAINLESS STEEL SELF DRILLING & SELF TAPPING  
 PAINTED / MOULDED HEAD  
 BAZ SEALING EDPM WASHER FOR SINUS PROFILE  
**PATTERN**  
 SHEET ENDS & INTERMEDIATES - EVERY 4TH  
 CROWN - 5 NO. FIXINGS (ENSURING FIX IN SIDE LAP)

**SINUSOIDAL EXTERNAL PROFILE**  
 GAUGE - 0.7mm  
 COATING - PROTEX APPROVED

**PROTEX APPROVED - EXTERNAL FLASHING**  
 COATING - PROTEX APPROVED  
 GAUGE - 0.7mm

**PROTEX APPROVED - EXTERNAL STITCHER FIXING**  
 STAINLESS STEEL SELF DRILLING & SELF TAPPING  
 PAINTED / MOULDED HEAD  
 16mm Ø EDPM WASHER  
**PATTERN**  
 SIDE LAP - 450mm CENTRES

**PROTEX APPROVED - FLASHING SEALANT**  
 9mm \* 3mm BUTYL TAPE  
**LOCATION**  
 CONTINUOUS RUN.

**PROTEX APPROVED - GLASS FIBRE INSULATION**  
 THICKNESS TO SUIT U-VALUE REQUIREMENT  
 MINIMUM THICKNESS - 120mm  
 FIRE CLASS A1 TO EN 13501-1  
 MANUFACTURED IN ACCORDANCE WITH BS EN 13162  
 (SUGGESTED THICKNESS TO BE >10% THAN SPACER SYSTEM DEPTH.)

**PROTEX APPROVED SPACER SYSTEM**  
 BRACKET DEPTH TO SUIT U-VALUE CALCULATIONS  
 MINIMUM DEPTH 120mm  
**PATTERN**  
 MAX RAIL CENTRE'S 1800mm  
 MAX BRACKET CENTRE'S 1000mm  
 BRACKET CENTRE'S TO SUIT LOADING CALCULATIONS  
 BRACKET MUST BE PLACED WITHIN 100mm OF MALE END OF SPACER SYSTEM JOINT AND BAR END

**N1000WL INTERNAL LINER PROFILE**  
 GAUGE - 0.7mm  
 COATING - BRIGHT WHITE LINER





**PROTEX APPROVED - LINER MAIN FIXING**  
 STAINLESS STEEL SELF DRILLING & SELF TAPPING  
 16mm Ø EDPM WASHER  
**PATTERN**  
 SHEET ENDS - EVERY TROUGH - 5 NO. FIXINGS  
 INTERMEDIATE SUPPORTS - ALTERNATE TROUGH - 3 NO. FIXINGS

**PROTEX APPROVED - FLASHING SEALANT**  
 50mm \* 1mm BUTYL TAPE  
**LOCATION**  
 CONTINUOUS RUN.

**PROTEX APPROVED - FLASHING SEALANT**  
 GUN GRADE BUTYL  
**LOCATION**  
 CONTINUOUS RUN  
 POSITIONED TO SEAL FLASHING TO MASONRY

**PROTEX APPROVED - FLASHING SEALANT**  
 GUN GRADE BUTYL  
**LOCATION**  
 CONTINUOUS RUN  
 POSITIONED TO SEAL FLASHING TO MASONRY

- INSTALLATION NOTES**
- FLASHING JOINTS SEALED WITH BUTYL
  - FLASHING JOINTS FIXED AT 100mm CENTRES (RIVET OR STITCH)
  - FLASHINGS FIXED AT 450mm CENTRES
  - BRACKET MUST BE POSITIONED WITHIN 100mm OF END OF BAR OR MALE END JOIN
  - NO IMPACT DRIVERS OR CLUTCHLESS DRILLS
  - NO CARBON FIXINGS

REV	DATE	DESCRIPTION
 <p><b>Firth Steels</b><sup>®</sup></p> <p>Firth Steels Ltd, Calderbank, River Street, Brighouse, West Yorkshire HD6 1LU            Technical@firth-steels.co.uk +44 1484 405940 Firth-steels.co.uk</p>		
		
 <p><b>PROTEX</b><sup>®</sup></p>		
 <p><b>UKCA</b></p> <p>LPCB  <small>LPS 1181 Curt/LPCB ref. 1611a</small></p> <p>UKAS  <small>0007</small></p>		
<p><small>This draft drawing has been supplied by Firth Steels Ltd for guidance purposes only and is provided free of charge. It represents a suggested typical detail and should not be assumed as suitable for any specific project or application. It is essential to read this in conjunction with the Protex System specification documents to ensure completeness of information.</small></p> <p><small>Please note: no responsibility is assumed for errors or misinterpretations resulting from the information contained within this drawing. Details depicted are for illustration purposes only, and no liability is accepted for their use. Firth Steels reserves the right to modify details without notice. This drawing is the property of Firth Steels Ltd, any reproduction without explicit written consent is prohibited.</small></p> <p><small>Firth Steels is committed to ongoing improvement. The details and data shared in this document are reflective of the current state as of the issue date. It is the duty of the recipients to ensure that the information in this document is still up-to-date at the time of its use.</small></p>		
<p>Drawing Number  <b>Protex-RS03-14 Abutment Detail</b></p>		
<p>Drawn by  <b>TO</b></p>	<p>Checked by  <b>KP</b></p>	<p>Date  <b>24/09/2024</b></p>
<p>Project Title  <b>PRX-RS-03</b></p>		<p>Size  <b>A3</b></p>
		<p>Revision  <b>A</b></p>
<p>&lt;&lt;&lt; DO NOT SCALE FROM THIS DRAWING &gt;&gt;&gt;</p>		