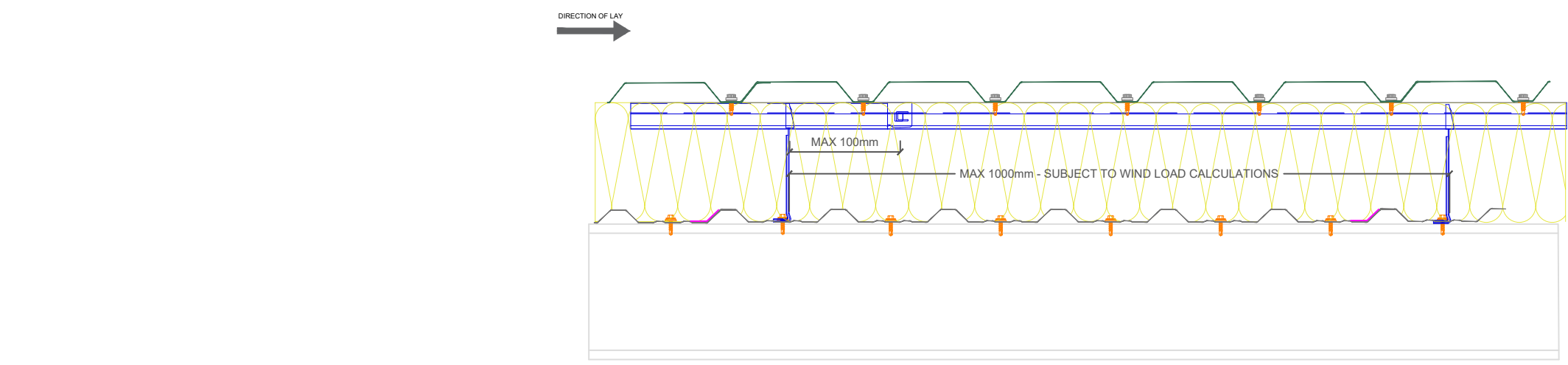


Total System Depth (mm)	Bracket / insulation Thickness (mm)	Thermal Performance (W/m ² K)	Acoustic Performance RW (db)	System Weight (Kg/m ²)
150	120	0.35	39	10.6
170	140	0.30	40	10.9
190	160	0.26	42	11.2
210	180	0.23	43	11.4
230	200	0.21	45	11.4
250	220	0.19	46	12.0
270	240	0.18	47	12.2



- INSTALLATION NOTES**
- FLASHING JOINTS SEALED WITH BUTYL
 - FLASHING JOINTS FIXED AT 100mm CENTRES (RIVET OR STITCH)
 - FLASHINGS FIXED AT 450mm CENTRES
 - BRACKET MUST BE POSITIONED WITHIN 100mm OF END OF BAR OR MALE END JOINT
 - NO IMPACT DRIVERS OR CLUTCHLESS DRILLS
 - NO CARBON FIXINGS

REV	DATE	DESCRIPTION

FirthSteels[®]
Firth Steels Ltd, Calderbank, River Street, Brighouse, West Yorkshire HD6 1LU
Technical@firth-steels.co.uk +44 1484 405940 Firth-steels.co.uk

SGS
SGS
SGS
UKAS
PlanetMark

PROTEX[®]

UKCA
LPCB
UKAS
LPS 1181 Cert/LPCB ref. 1611a

This draft drawing has been supplied by Firth Steels Ltd for guidance purposes only and is provided free of charge. It represents a suggested typical detail and should not be assumed as suitable for any specific project or application. It is essential to read this in conjunction with the Protex System specification documents to ensure completeness of information. Please note, no responsibility is assumed for errors or misinterpretations resulting from the information contained within this drawing. Details depicted are for illustration purposes only, and no liability is accepted for their use. Firth Steels reserves the right to modify details without notice. This drawing is the property of Firth Steels Ltd, any reproduction without explicit written consent is prohibited. Firth Steels is committed to ongoing improvement. The details and data shared in this document are reflective of the current state as of the issue date. It is the duty of the recipients to ensure that the information in this document is still up-to-date at the time of its use.

Drawing Number Protex-WS01-1 Side Lap Detail			
Drawn by KP	Checked by TO	Date 24/09/2024	
Project Title PRX-WS-01		Size A3	Revision A

<<< DO NOT SCALE FROM THIS DRAWING >>>

Total System Depth (mm)	Bracket / insulation Thickness (mm)	Thermal Performance (W/m ² K)	Acoustic Performance RW (db)	System Weight (Kg/m ²)
150	120	0.35	39	10.6
170	140	0.30	40	10.9
190	160	0.26	42	11.2
210	180	0.23	43	11.4
230	200	0.21	45	11.4
250	220	0.19	46	12.0
270	240	0.18	47	12.2

PROTEX APPROVED - SPACER SYSTEM
 BRACKET DEPTH TO SUIT U-VALUE CALCULATIONS
 MINIMUM DEPTH 120mm
PATTERN
 MAX RAIL CENTRE'S 1800mm
 MAX BRACKET CENTRE'S 1000mm
 BRACKET CENTRE'S TO SUIT LOADING CALCULATIONS
 BRACKET MUST BE PLACED WITHIN 100mm OF MALE END OF SPACER SYSTEM JOINT AND BAR END

PROTEX APPROVED - EXTERNAL MAIN FIXING
 STAINLESS STEEL SELF DRILLING & SELF TAPPING
 PAINTED / MOULDED HEAD
 16mm Ø EDPM WASHER
PATTERN
 SHEET ENDS - EVERY TROUGH - 5 NO. FIXINGS
 INTERMEDIATE SUPPORTS - ALTERNATE TROUGH - 3 NO. FIXINGS

PROTEX APPROVED - EXTERNAL STITCHER FIXING
 STAINLESS STEEL SELF DRILLING & SELF TAPPING
 PAINTED / MOULDED HEAD
 16mm Ø EDPM WASHER
PATTERN
 SIDE LAP - 600mm CENTRES

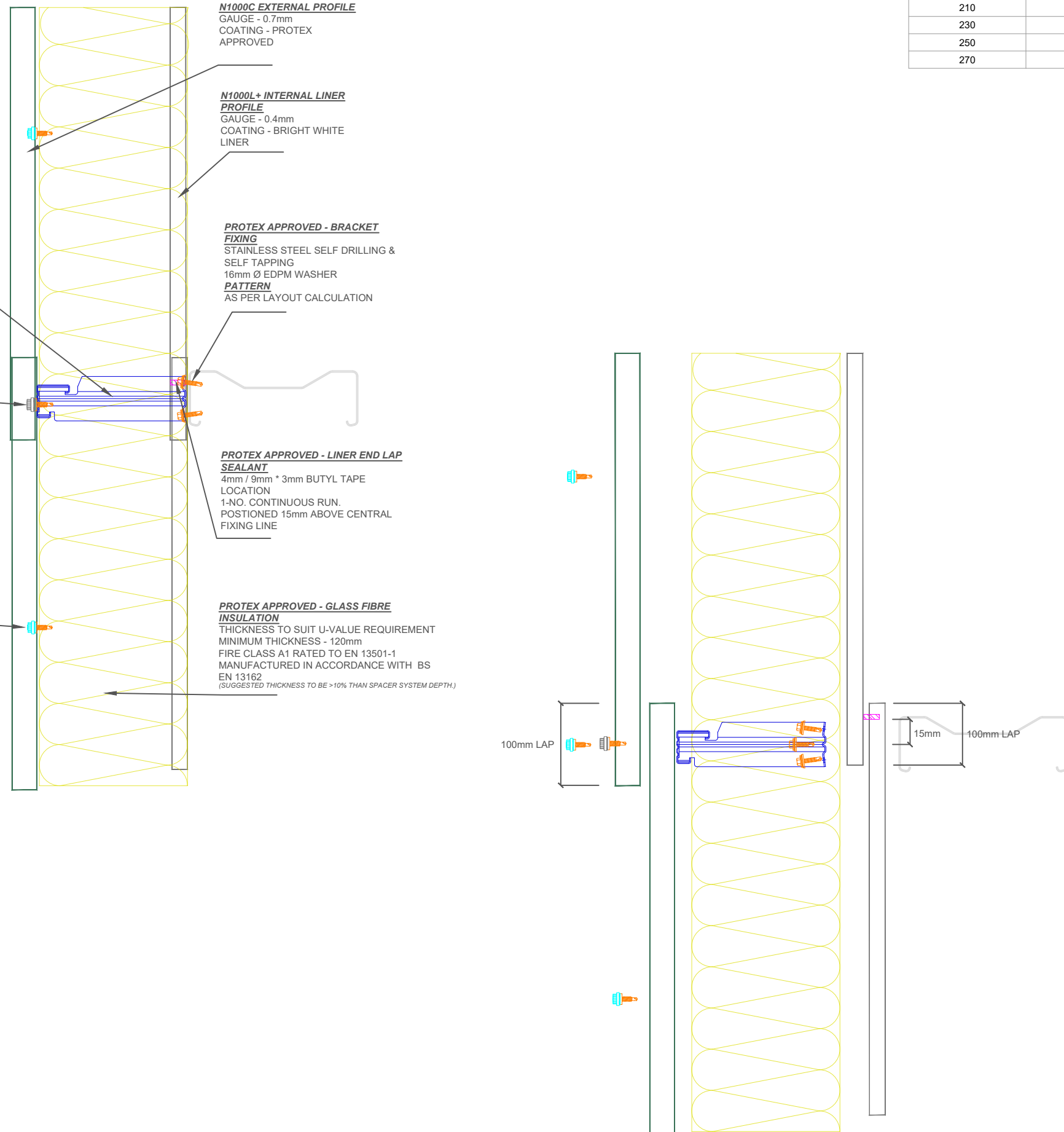
N1000C EXTERNAL PROFILE
 GAUGE - 0.7mm
 COATING - PROTEX APPROVED

N1000L+ INTERNAL LINER PROFILE
 GAUGE - 0.4mm
 COATING - BRIGHT WHITE LINER

PROTEX APPROVED - BRACKET FIXING
 STAINLESS STEEL SELF DRILLING & SELF TAPPING
 16mm Ø EDPM WASHER
PATTERN
 AS PER LAYOUT CALCULATION

PROTEX APPROVED - LINER END LAP SEALANT
 4mm / 9mm * 3mm BUTYL TAPE
 LOCATION
 1-NO. CONTINUOUS RUN.
 POSITIONED 15mm ABOVE CENTRAL FIXING LINE

PROTEX APPROVED - GLASS FIBRE INSULATION
 THICKNESS TO SUIT U-VALUE REQUIREMENT
 MINIMUM THICKNESS - 120mm
 FIRE CLASS A1 RATED TO EN 13501-1
 MANUFACTURED IN ACCORDANCE WITH BS EN 13162
 (SUGGESTED THICKNESS TO BE >10% THAN SPACER SYSTEM DEPTH.)



- INSTALLATION NOTES**
- FLASHING JOINTS SEALED WITH BUTYL
 - FLASHING JOINTS FIXED AT 100mm CENTRES (RIVET OR STITCH)
 - FLASHINGS FIXED AT 450mm CENTRES
 - BRACKET MUST BE POSITIONED WITHIN 100mm OF END OF BAR OR MALE END JOINT
 - NO IMPACT DRIVERS OR CLUTCHLESS DRILLS
 - NO CARBON FIXINGS

REV	DATE	DESCRIPTION

FirthSteels
 Firth Steels Ltd, Calderbank, River Street, Brighouse, West Yorkshire HD6 1LU
 Technical@firth-steels.co.uk +44 1484 405940 Firth-steels.co.uk

SGS, UKAS, PlanetMark, LPCB, UKCA

PROTEX

UKCA, LPCB, UKAS

LPS 1181 Curt/LPCB ref. 1611a

This draft drawing has been supplied by Firth Steels Ltd for guidance purposes only and is provided free of charge. It represents a suggested typical detail and should not be assumed as suitable for any specific project or application. It is essential to read this in conjunction with the Protex System specification documents to ensure completeness of information. Please note, no responsibility is assumed for errors or misinterpretations resulting from the information contained within this drawing. Details depicted are for illustration purposes only, and no liability is accepted for their use. Firth Steels reserves the right to modify details without notice. This drawing is the property of Firth Steels Ltd, any reproduction without explicit written consent is prohibited. Firth Steels is committed to ongoing improvement. The details and data shared in this document are reflective of the current state as of the issue date. It is the duty of the recipients to ensure that the information in this document is still up-to-date at the time of its use.

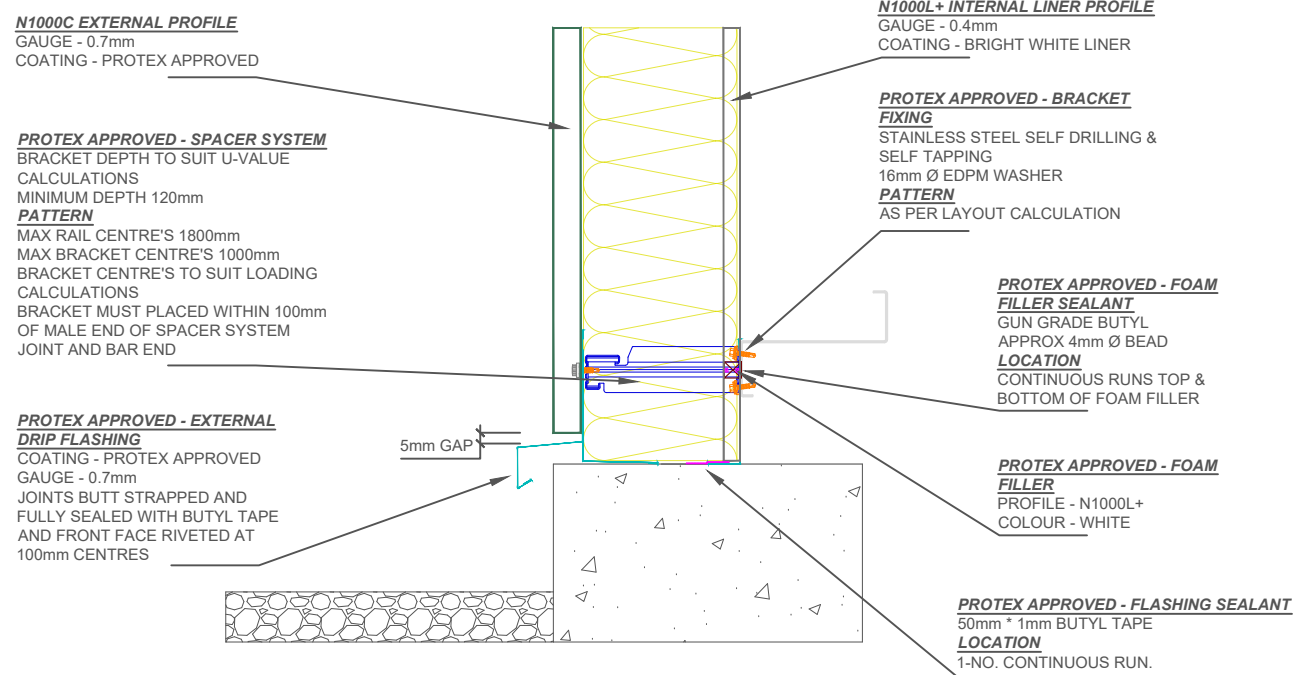
Drawing Number
Protex-WS01-2 End Lap Detail

Drawn by: **KP** Checked by: **TO** Date: **24/09/2024**

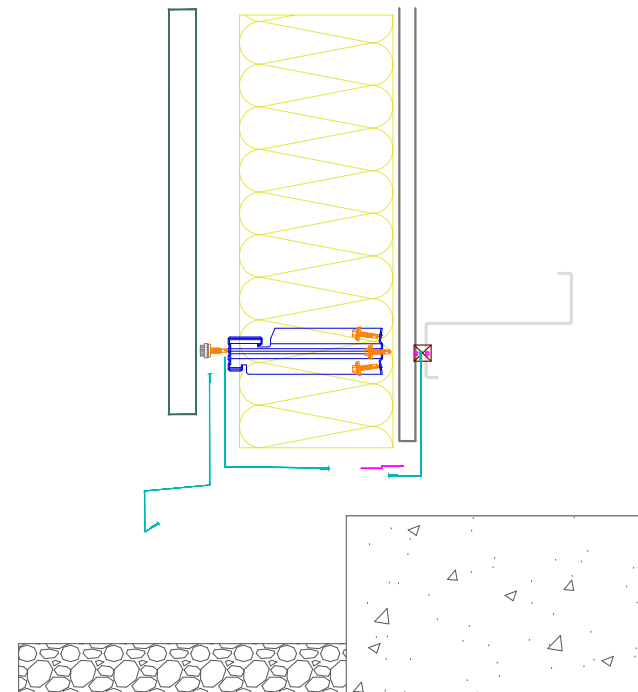
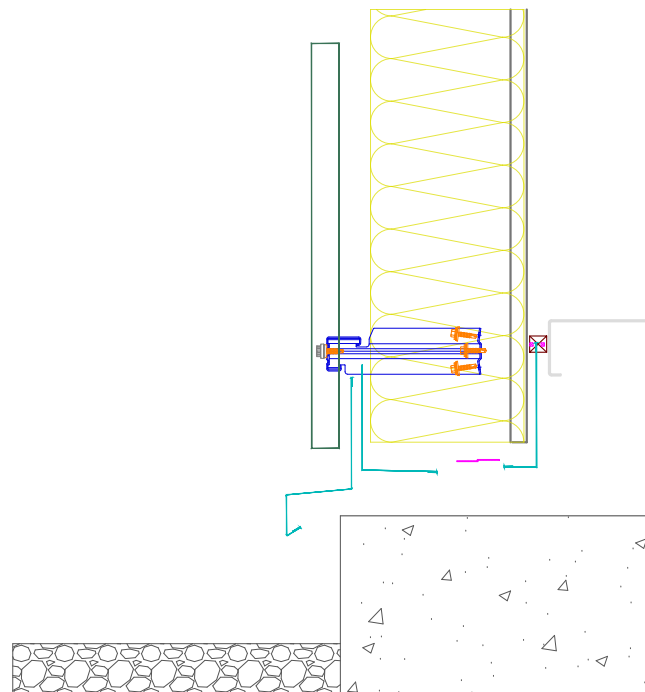
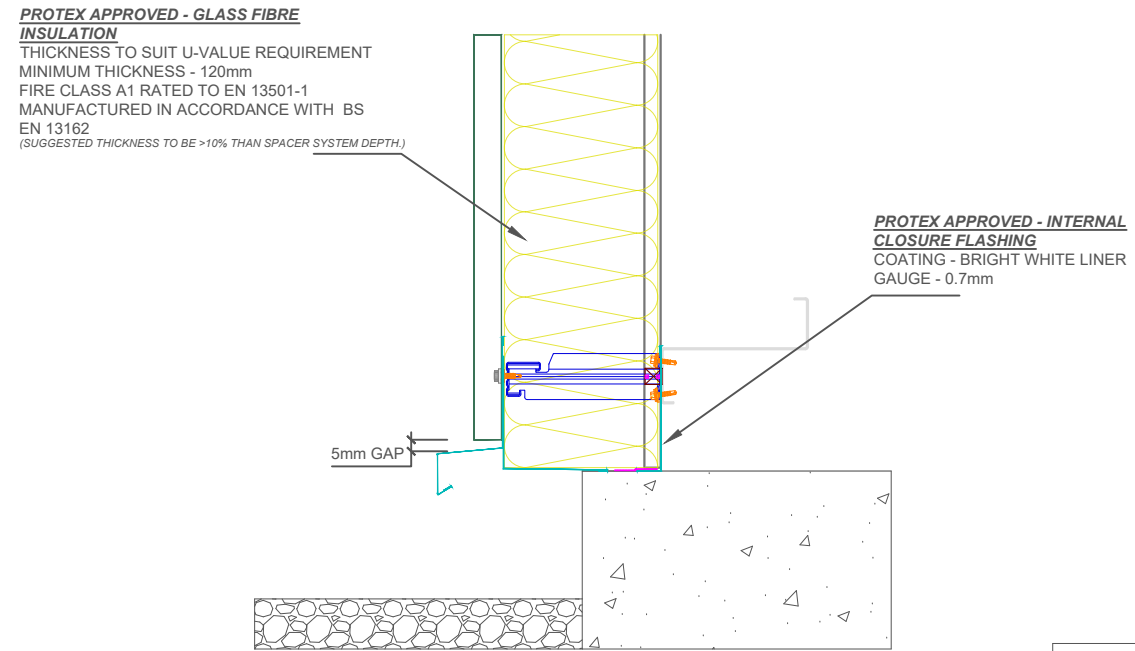
Project Title: **PRX-WS-01** Size: **A3** Revision: **A**

<<< DO NOT SCALE FROM THIS DRAWING >>>

INLINE BASE DETAIL



OVERHANGING BASE DETAIL



- INSTALLATION NOTES**
- FLASHING JOINTS SEALED WITH BUTYL
 - FLASHING JOINTS FIXED AT 100mm CENTRES (RIVET OR STITCH)
 - FLASHINGS FIXED AT 450mm CENTRES
 - BRACKET MUST BE POSITIONED WITHIN 100mm OF END OF BAR OR MALE END JOINT
 - NO IMPACT DRIVERS OR CLUTCHLESS DRILLS
 - NO CARBON FIXINGS

REV	DATE	DESCRIPTION

FirthSteels[®]

Firth Steels Ltd, Calderbank, River Street, Brighouse, West Yorkshire HD6 1LU
Technical@firth-steels.co.uk +44 1484 405940 Firth-steels.co.uk



PROTEX[®]

**UK
CA**



LPS 1181 Curt/LPCB ref. 1611a

This draft drawing has been supplied by Firth Steels Ltd for guidance purposes only and is provided free of charge. It represents a suggested typical detail and should not be assumed as suitable for any specific project or application. It is essential to read this in conjunction with the Protex System specification documents to ensure completeness of information. Please note, no responsibility is assumed for errors or misinterpretations resulting from the information contained within this drawing. Details depicted are for illustration purposes only, and no liability is accepted for their use. Firth Steels reserves the right to modify details without notice. This drawing is the property of Firth Steels Ltd, any reproduction without explicit written consent is prohibited. Firth Steels is committed to ongoing improvement. The details and data shared in this document are reflective of the current state as of the issue date. It is the duty of the recipients to ensure that the information in this document is still up-to-date at the time of its use.

Drawing Number
Protex-WS01-3 Drip Detail

Drawn by KP	Checked by TO	Date 24/09/2024
----------------	------------------	--------------------

Project Title PRX-WS-01	Size A3	Revision A
----------------------------	------------	---------------

<<< DO NOT SCALE FROM THIS DRAWING >>>

N1000C EXTERNAL PROFILE
GAUGE - 0.7mm
COATING - PROTEX APPROVED

PROTEX APPROVED - EXTERNAL MAIN FIXING
STAINLESS STEEL SELF DRILLING & SELF TAPPING
PAINTED / MOULDED HEAD
16mm Ø EDPM WASHER
PATTERN
SHEET ENDS - EVERY TROUGH - 5 NO. FIXINGS
INTERMEDIATE SUPPORTS - ALTERNATE TROUGH - 3 NO. FIXINGS

PROTEX APPROVED - LINER MAIN FIXING
STAINLESS STEEL SELF DRILLING & SELF TAPPING
16mm Ø EDPM WASHER
PATTERN
SHEET ENDS - EVERY TROUGH - 6 NO. FIXINGS
INTERMEDIATE SUPPORTS - ALTERNATE TROUGH - 4 NO. FIXINGS

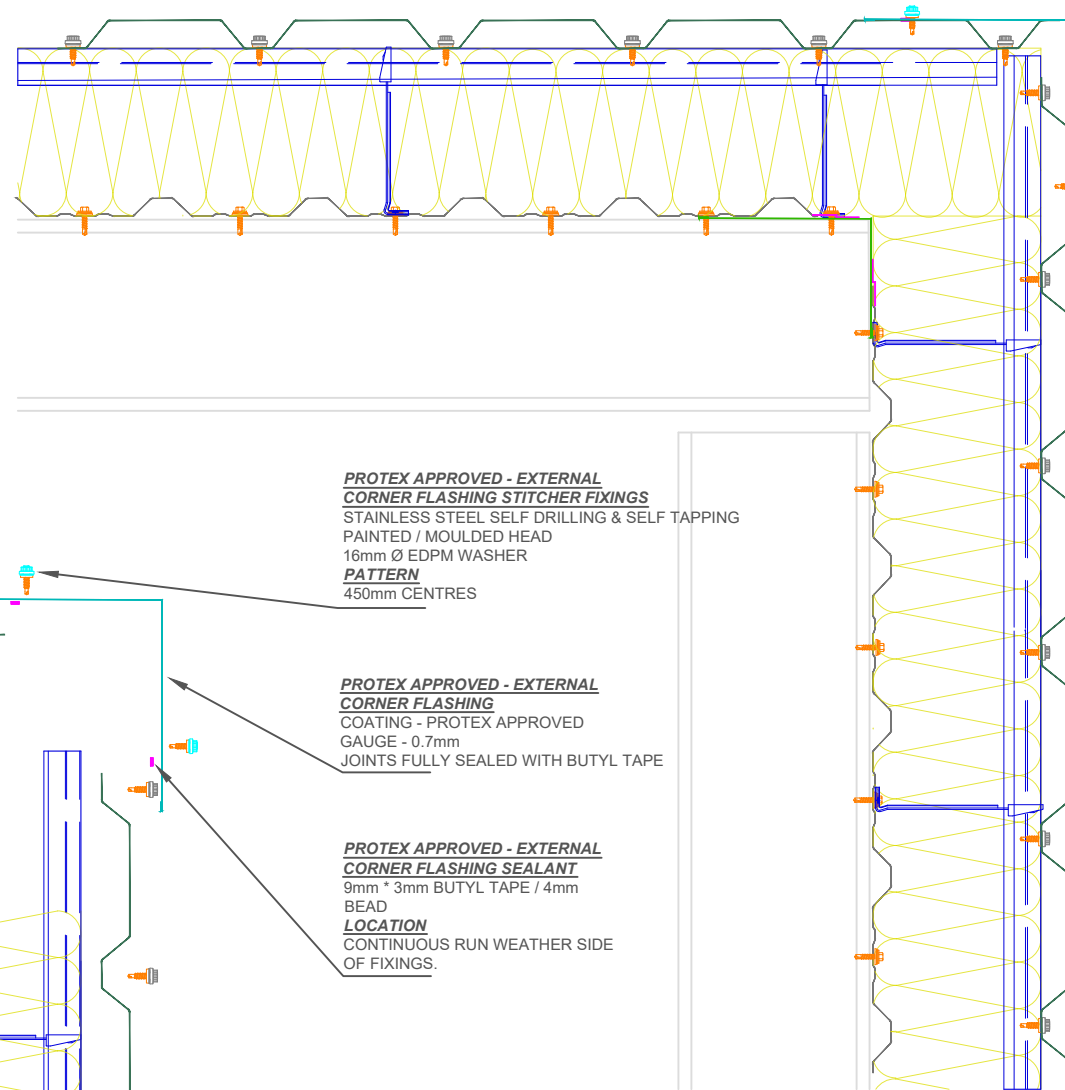
PROTEX APPROVED - LINER SIDE LAP SEALANT
50mm * 1mm BUTYL TAPE
LOCATION
1-NO. CONTINUOUS RUN, POSITIONED CENTRAL OVER JOIN

PROTEX APPROVED - INTERNAL DRIP FLASHING
COATING - PROTEX APPROVED
GAUGE - 0.7mm
JOINTS FULLY SEALED WITH BUTYL TAPE

PROTEX APPROVED - BRACKET FIXING
STAINLESS STEEL SELF DRILLING & SELF TAPPING
16mm Ø EDPM WASHER
PATTERN
AS PER LAYOUT CALCULATION

PROTEX APPROVED - SPACER SYSTEM
BRACKET DEPTH TO SUIT U-VALUE CALCULATIONS
MINIMUM DEPTH 120mm
PATTERN
MAX RAIL CENTRE'S 1800mm
MAX BRACKET CENTRE'S 1000mm
BRACKET CENTRE'S TO SUIT LOADING CALCULATIONS
BRACKET MUST BE PLACED WITHIN 100mm OF MALE END OF SPACER SYSTEM JOINT AND BAR END

N1000L+ INTERNAL LINER PROFILE
GAUGE - 0.4mm
COATING - BRIGHT WHITE LINER



PROTEX APPROVED - EXTERNAL CORNER FLASHING STITCHER FIXINGS
STAINLESS STEEL SELF DRILLING & SELF TAPPING
PAINTED / MOULDED HEAD
16mm Ø EDPM WASHER
PATTERN
450mm CENTRES

PROTEX APPROVED - EXTERNAL CORNER FLASHING
COATING - PROTEX APPROVED
GAUGE - 0.7mm
JOINTS FULLY SEALED WITH BUTYL TAPE

PROTEX APPROVED - EXTERNAL CORNER FLASHING SEALANT
9mm * 3mm BUTYL TAPE / 4mm BEAD
LOCATION
CONTINUOUS RUN WEATHER SIDE OF FIXINGS.

PROTEX APPROVED - GLASS FIBRE INSULATION
THICKNESS TO SUIT U-VALUE REQUIREMENT
MINIMUM THICKNESS - 120mm
FIRE CLASS A1 RATED TO EN 13501-1
MANUFACTURED IN ACCORDANCE WITH BS EN 13162
(SUGGESTED THICKNESS TO BE >10% THAN SPACER SYSTEM DEPTH.)

- INSTALLATION NOTES**
- FLASHING JOINTS SEALED WITH BUTYL
 - FLASHING JOINTS FIXED AT 100mm CENTRES (RIVET OR STITCH)
 - FLASHINGS FIXED AT 450mm CENTRES
 - BRACKET MUST BE POSITIONED WITHIN 100mm OF END OF BAR OR MALE END JOIN
 - NO IMPACT DRIVERS OR CLUTCHLESS DRILLS
 - NO CARBON FIXINGS

REV	DATE	DESCRIPTION
-----	------	-------------



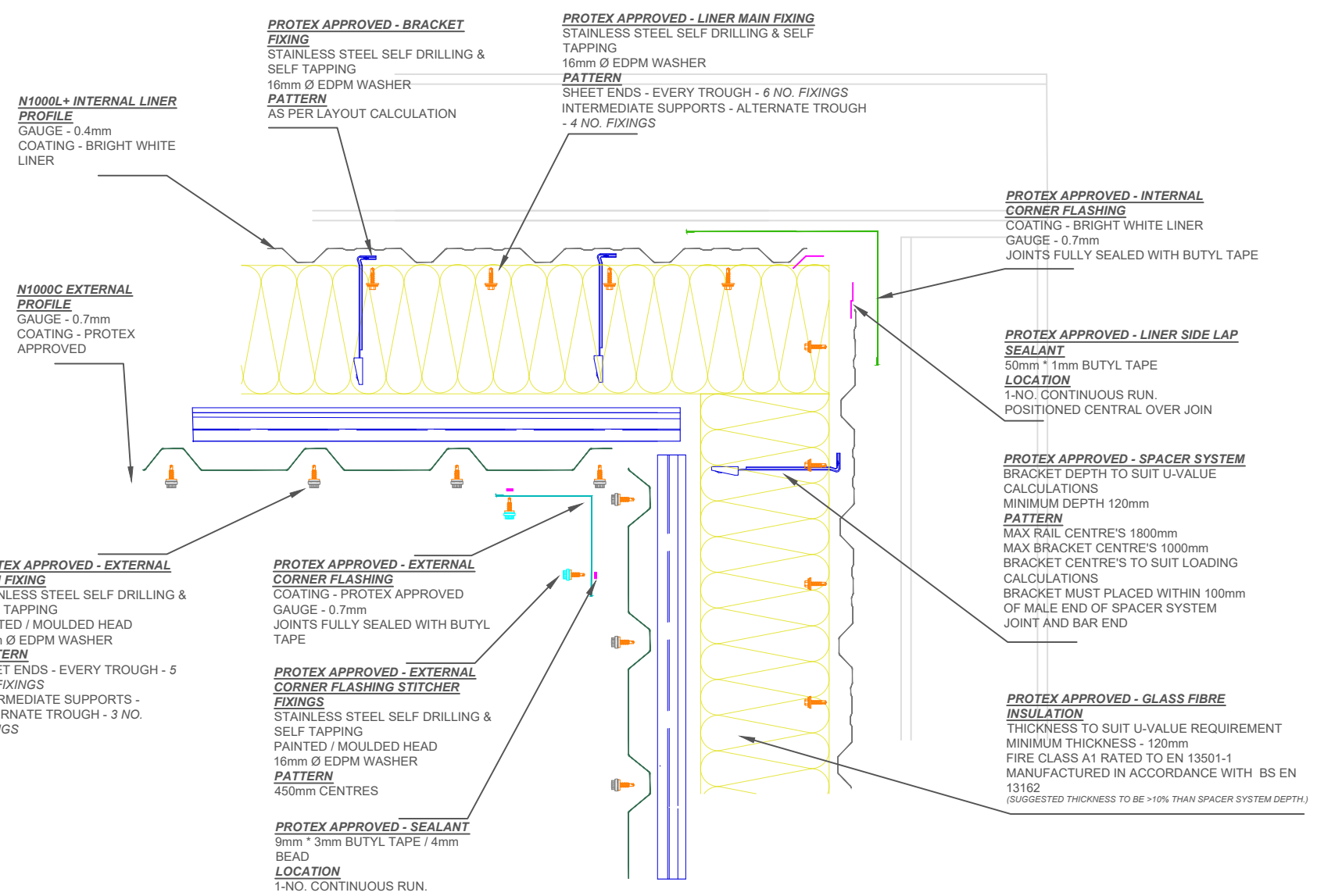
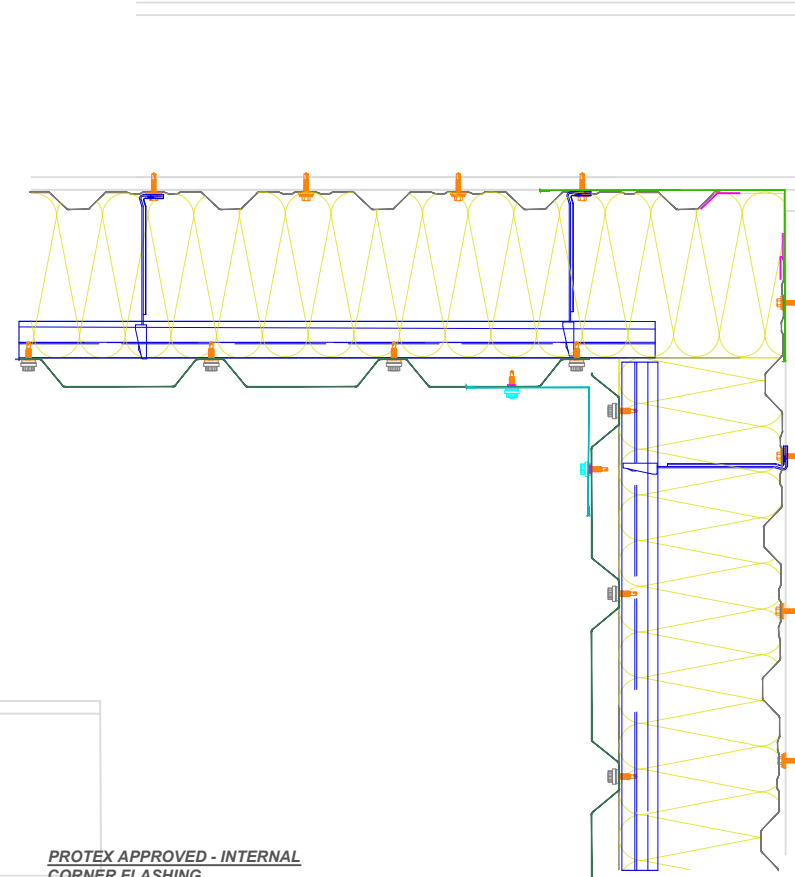
This draft drawing has been supplied by Firth Steels Ltd for guidance purposes only and is provided free of charge. It represents a suggested typical detail and should not be assumed as suitable for any specific project or application. It is essential to read this in conjunction with the Protex System specification documents to ensure completeness of information. Please note, no responsibility is assumed for errors or misinterpretations resulting from the information contained within this drawing. Details depicted are for illustration purposes only, and no liability is accepted for their use. Firth Steels reserves the right to modify details without notice. This drawing is the property of Firth Steels Ltd, any reproduction without explicit written consent is prohibited. Firth Steels is committed to ongoing improvement. The details and data shared in this document are reflective of the current state as of the issue date. It is the duty of the recipients to ensure that the information in this document is still up-to-date at the time of its use.

Drawing Number
Protex-WS01-4 Standard External Corner

Drawn by KP	Checked by TO	Date 24/09/2024
----------------	------------------	--------------------

Project Title PRX-WS-01	Size A3	Revision A
----------------------------	------------	---------------

<<< DO NOT SCALE FROM THIS DRAWING >>>



N1000L+ INTERNAL LINER PROFILE
GAUGE - 0.4mm
COATING - BRIGHT WHITE LINER

PROTEX APPROVED - BRACKET FIXING
STAINLESS STEEL SELF DRILLING & SELF TAPPING
16mm Ø EDPM WASHER
PATTERN
AS PER LAYOUT CALCULATION

PROTEX APPROVED - LINER MAIN FIXING
STAINLESS STEEL SELF DRILLING & SELF TAPPING
16mm Ø EDPM WASHER
PATTERN
SHEET ENDS - EVERY TROUGH - 6 NO. FIXINGS
INTERMEDIATE SUPPORTS - ALTERNATE TROUGH - 4 NO. FIXINGS

N1000C EXTERNAL PROFILE
GAUGE - 0.7mm
COATING - PROTEx APPROVED

PROTEX APPROVED - INTERNAL CORNER FLASHING
COATING - BRIGHT WHITE LINER
GAUGE - 0.7mm
JOINTS FULLY SEALED WITH BUTYL TAPE

PROTEX APPROVED - LINER SIDE LAP SEALANT
50mm * 1mm BUTYL TAPE
LOCATION
1-NO. CONTINUOUS RUN.
POSITIONED CENTRAL OVER JOIN

PROTEX APPROVED - SPACER SYSTEM
BRACKET DEPTH TO SUIT U-VALUE CALCULATIONS
MINIMUM DEPTH 120mm
PATTERN
MAX RAIL CENTRE'S 1800mm
MAX BRACKET CENTRE'S 1000mm
BRACKET CENTRE'S TO SUIT LOADING CALCULATIONS
BRACKET MUST BE PLACED WITHIN 100mm OF MALE END OF SPACER SYSTEM JOINT AND BAR END

PROTEX APPROVED - EXTERNAL MAIN FIXING
STAINLESS STEEL SELF DRILLING & SELF TAPPING
PAINTED / MOULDED HEAD
16mm Ø EDPM WASHER
PATTERN
SHEET ENDS - EVERY TROUGH - 5 NO. FIXINGS
INTERMEDIATE SUPPORTS - ALTERNATE TROUGH - 3 NO. FIXINGS

PROTEX APPROVED - EXTERNAL CORNER FLASHING
COATING - PROTEx APPROVED
GAUGE - 0.7mm
JOINTS FULLY SEALED WITH BUTYL TAPE

PROTEX APPROVED - EXTERNAL CORNER FLASHING STITCHER FIXINGS
STAINLESS STEEL SELF DRILLING & SELF TAPPING
PAINTED / MOULDED HEAD
16mm Ø EDPM WASHER
PATTERN
450mm CENTRES

PROTEX APPROVED - SEALANT
9mm * 3mm BUTYL TAPE / 4mm BEAD
LOCATION
1-NO. CONTINUOUS RUN.

PROTEX APPROVED - GLASS FIBRE INSULATION
THICKNESS TO SUIT U-VALUE REQUIREMENT
MINIMUM THICKNESS - 120mm
FIRE CLASS A1 RATED TO EN 13501-1
MANUFACTURED IN ACCORDANCE WITH BS EN 13162
(SUGGESTED THICKNESS TO BE >10% THAN SPACER SYSTEM DEPTH.)

- INSTALLATION NOTES**
- FLASHING JOINTS SEALED WITH BUTYL
 - FLASHING JOINTS FIXED AT 100mm CENTRES (RIVET OR STITCH)
 - FLASHINGS FIXED AT 450mm CENTRES
 - BRACKET MUST BE POSITIONED WITHIN 100mm OF END OF BAR OR MALE END JOIN
 - NO IMPACT DRIVERS OR CLUTCHLESS DRILLS
 - NO CARBON FIXINGS

REV	DATE	DESCRIPTION

Firth Steels
Firth Steels Ltd, Calderbank, River Street, Brighouse, West Yorkshire HD6 1LU
Technical@firth-steels.co.uk +44 1484 405940 Firth-steels.co.uk

SGS SGS SGS UKAS PLANETMARK

PROTEX

UK CA LPCB UKAS

LPS 1181 Cert LPCB ref. 1611a

This draft drawing has been supplied by Firth Steels Ltd for guidance purposes only and is provided free of charge. It represents a suggested typical detail and should not be assumed as suitable for any specific project or application. It is essential to read this in conjunction with the Protex System specification documents to ensure completeness of information. Please note, no responsibility is assumed for errors or misinterpretations resulting from the information contained within this drawing. Details depicted are for illustration purposes only, and no liability is accepted for their use. Firth Steels reserves the right to modify details without notice. This drawing is the property of Firth Steels Ltd, any reproduction without explicit written consent is prohibited. Firth Steels is committed to ongoing improvement. The details and data shared in this document are reflective of the current state as of the issue date. It is the duty of the recipients to ensure that the information in this document is still up-to-date at the time of its use.

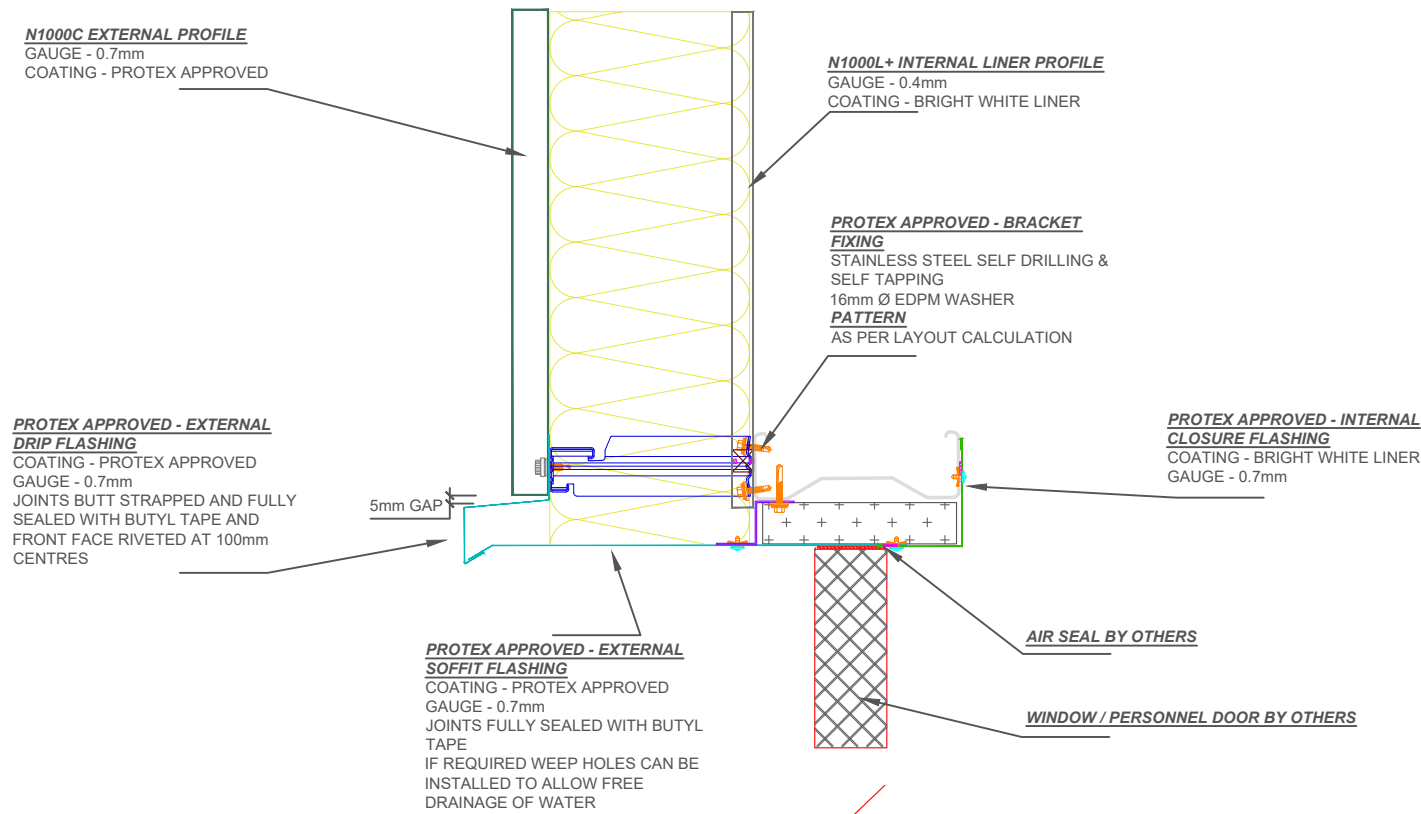
Drawing Number
Protex-WS01-5 Internal Corner

Drawn by: KP
Checked by: TO
Date: 24/09/2024

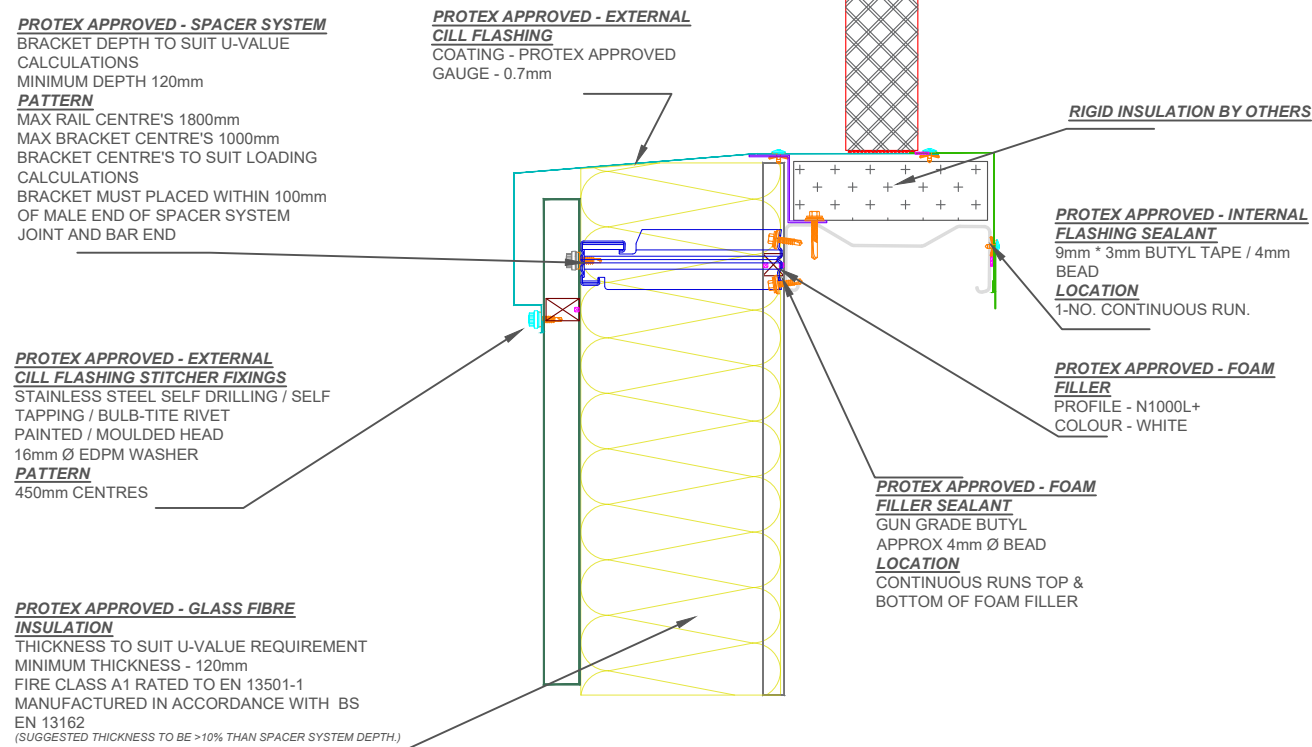
Project Title: PRX-WS-01
Size: A3
Revision: A

<<< DO NOT SCALE FROM THIS DRAWING >>>

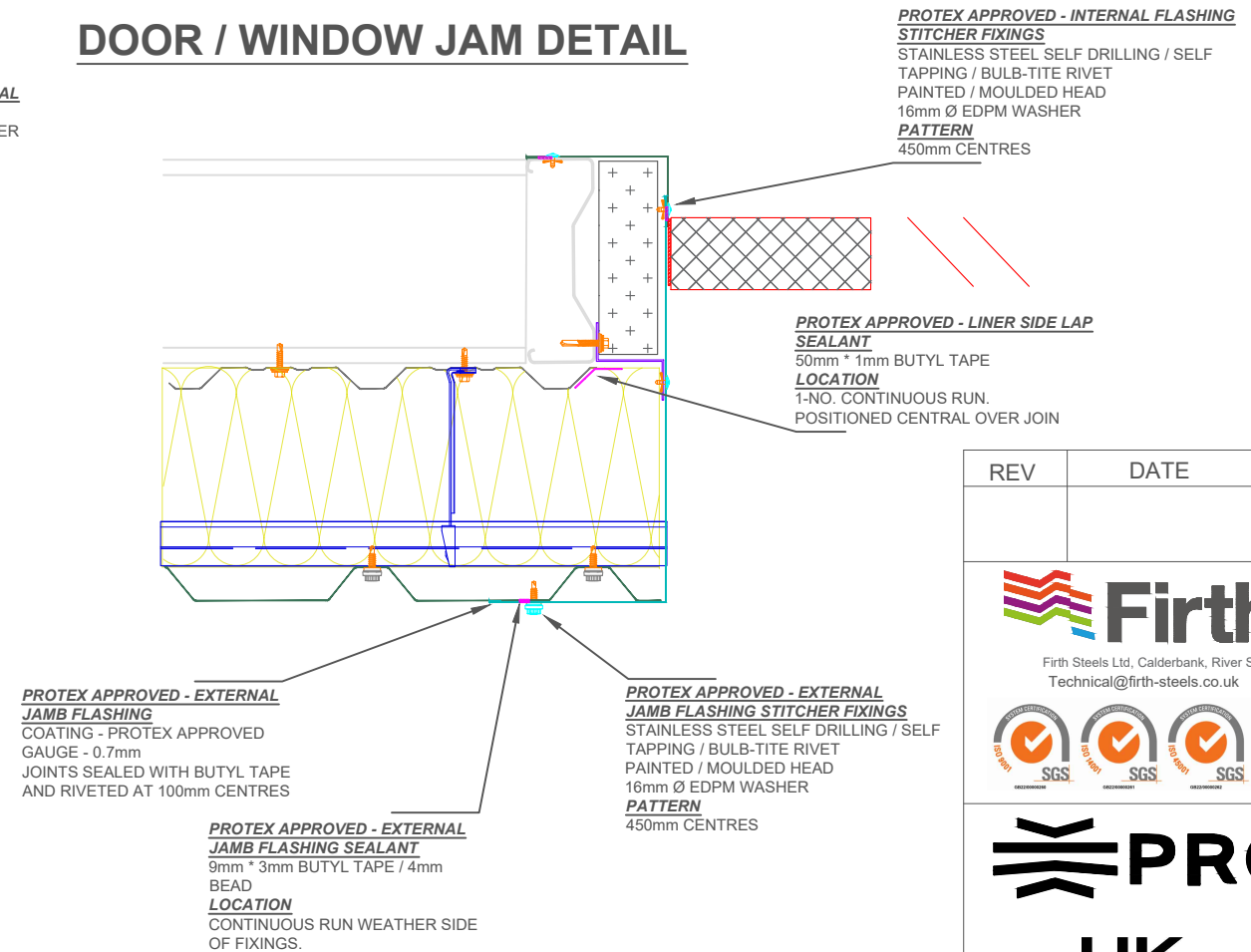
DOOR / WINDOW HEADER DETAIL



WINDOW CILL DETAIL



DOOR / WINDOW JAM DETAIL



- INSTALLATION NOTES**
- FLASHING JOINTS SEALED WITH BUTYL
 - FLASHING JOINTS FIXED AT 100mm CENTRES (RIVET OR STITCH)
 - FLASHINGS FIXED AT 450mm CENTRES
 - BRACKET MUST BE POSITIONED WITHIN 100mm OF END OF BAR OR MALE END JOIN
 - NO IMPACT DRIVERS OR CLUTCHLESS DRILLS
 - NO CARBON FIXINGS

REV	DATE	DESCRIPTION

FirthSteels[®]
Firth Steels Ltd, Calderbank, River Street, Brighouse, West Yorkshire HD6 1LU
Technical@firth-steels.co.uk +44 1484 405940 Firth-steels.co.uk

SGS SGS SGS UKAS PLANETMARK

PROTEX[®]

UK CA

LPCB UKAS

LPS 1181 CurtLPCB ref. 1611a

This draft drawing has been supplied by Firth Steels Ltd for guidance purposes only and is provided free of charge. It represents a suggested typical detail and should not be assumed as suitable for any specific project or application. It is essential to read this in conjunction with the Protex System specification documents to ensure completeness of information. Please note, no responsibility is assumed for errors or misinterpretations resulting from the information contained within this drawing. Details depicted are for illustration purposes only, and no liability is accepted for their use. Firth Steels reserves the right to modify details without notice. This drawing is the property of Firth Steels Ltd, any reproduction without explicit written consent is prohibited. Firth Steels is committed to ongoing improvement. The details and data shared in this document are reflective of the current state as of the issue date. It is the duty of the recipients to ensure that the information in this document is still up-to-date at the time of its use.

Drawing Number
Protex-WS01-6 Window / Personnel Door

Drawn by KP	Checked by TO	Date 24/09/2024
----------------	------------------	--------------------

Project Title PRX-WS-01	Size A3	Revision A
----------------------------	------------	---------------

<<< DO NOT SCALE FROM THIS DRAWING >>>

SHUTTER DOOR HEADER DETAIL

PROTEX APPROVED - SPACER SYSTEM

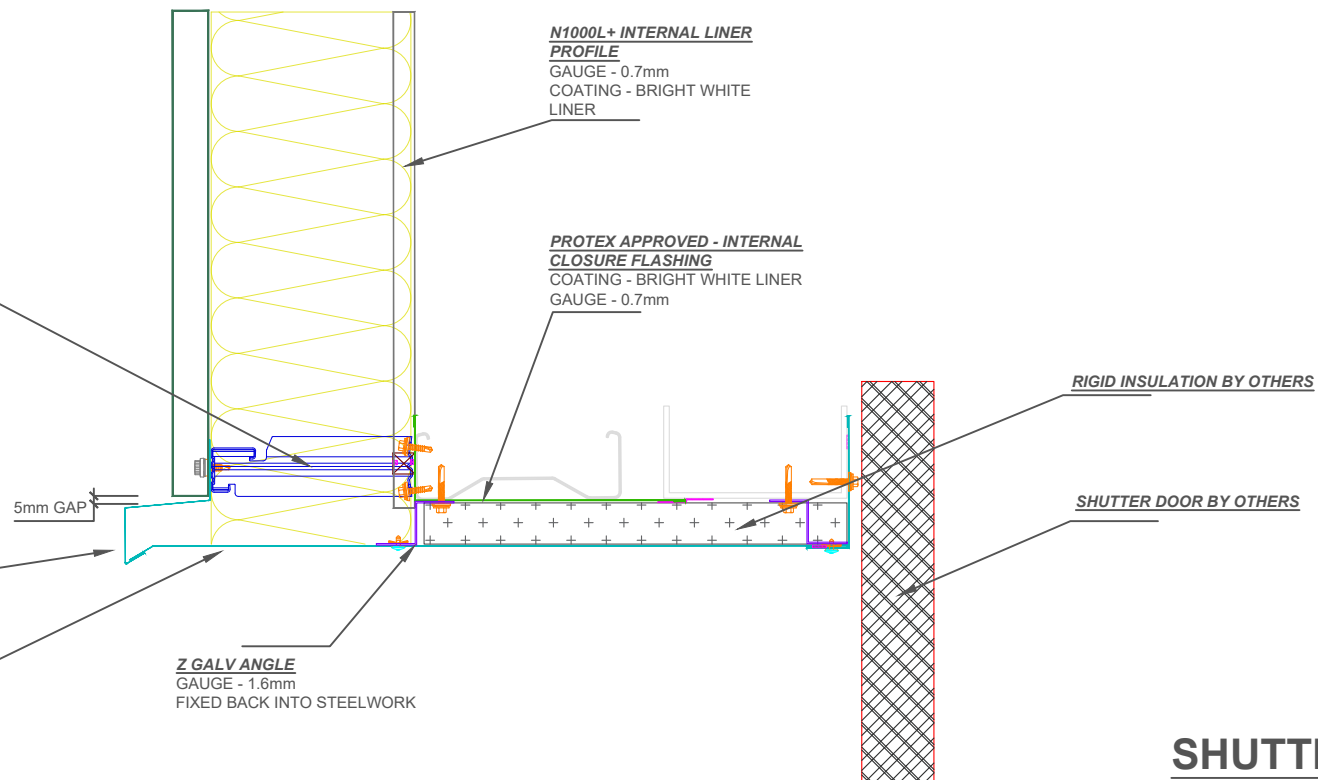
BRACKET DEPTH TO SUIT U-VALUE CALCULATIONS
 MINIMUM DEPTH 120mm
PATTERN
 MAX RAIL CENTRE'S 1800mm
 MAX BRACKET CENTRE'S 1000mm
 BRACKET CENTRE'S TO SUIT LOADING CALCULATIONS
 BRACKET MUST BE PLACED WITHIN 100mm OF MALE END OF SPACER SYSTEM JOINT AND BAR END

PROTEX APPROVED - EXTERNAL DRIP FLASHING

COATING - PROTEX APPROVED
 GAUGE - 0.7mm
 JOINTS BUTT STRAPPED AND FULLY SEALED WITH BUTYL TAPE AND FRONT FACE RIVETED AT 100mm CENTRES

PROTEX APPROVED - EXTERNAL SOFFIT FLASHING

COATING - PROTEX APPROVED
 GAUGE - 0.7mm
 JOINTS FULLY SEALED WITH BUTYL TAPE
 IF REQUIRED WEEP HOLES CAN BE INSTALLED TO ALLOW FREE DRAINAGE OF WATER



SHUTTER DOOR JAMB DETAIL

PROTEX APPROVED - BRACKET FIXING

STAINLESS STEEL SELF DRILLING & SELF TAPPING
 16mm Ø EDPM WASHER
PATTERN
 AS PER LAYOUT CALCULATION

PROTEX APPROVED - GLASS FIBRE INSULATION

THICKNESS TO SUIT U-VALUE REQUIREMENT
 MINIMUM THICKNESS - 120mm
 FIRE CLASS A1 RATED TO EN 13501-1
 MANUFACTURED IN ACCORDANCE WITH BS EN 13162
 (SUGGESTED THICKNESS TO BE > 10% THAN SPACER SYSTEM DEPTH.)

N1000C EXTERNAL PROFILE
 GAUGE - 0.7mm
 COATING - PROTEX APPROVED

PROTEX APPROVED - EXTERNAL JAMB FLASHING SEALANT
 9mm * 3mm BUTYL TAPE / 4mm BEAD
LOCATION
 CONTINUOUS RUN WEATHER SIDE OF FIXINGS.

PROTEX APPROVED - EXTERNAL JAMB FLASHING STITCHER FIXINGS
 STAINLESS STEEL SELF DRILLING / SELF TAPPING / BULB-TITE RIVET
 PAINTED / MOULDED HEAD
 16mm Ø EDPM WASHER
PATTERN
 450mm CENTRES

PROTEX APPROVED - LINER SIDE LAP SEALANT
 50mm * 1mm BUTYL TAPE
LOCATION
 1-NO. CONTINUOUS RUN. POSITIONED CENTRAL OVER JOIN

PROTEX APPROVED - EXTERNAL JAMB FLASHING
 COATING - PROTEX APPROVED
 GAUGE - 0.7mm

- INSTALLATION NOTES**
- FLASHING JOINTS SEALED WITH BUTYL
 - FLASHING JOINTS FIXED AT 100mm CENTRES (RIVET OR STITCH)
 - FLASHINGS FIXED AT 450mm CENTRES
 - BRACKET MUST BE POSITIONED WITHIN 100mm OF END OF BAR OR MALE END JOIN
 - NO IMPACT DRIVERS OR CLUTCHLESS DRILLS
 - NO CARBON FIXINGS

REV	DATE	DESCRIPTION

FirthSteels[®]
 Firth Steels Ltd, Calderbank, River Street, Brighouse, West Yorkshire HD6 1LU
 Technical@firth-steels.co.uk +44 1484 405940 Firth-steels.co.uk

SGS SGS SGS UKAS PLANETMARK

PROTEX[®]

UKCA LPCB UKAS

LPS 1181 Cert/LPCB ref. 1611a

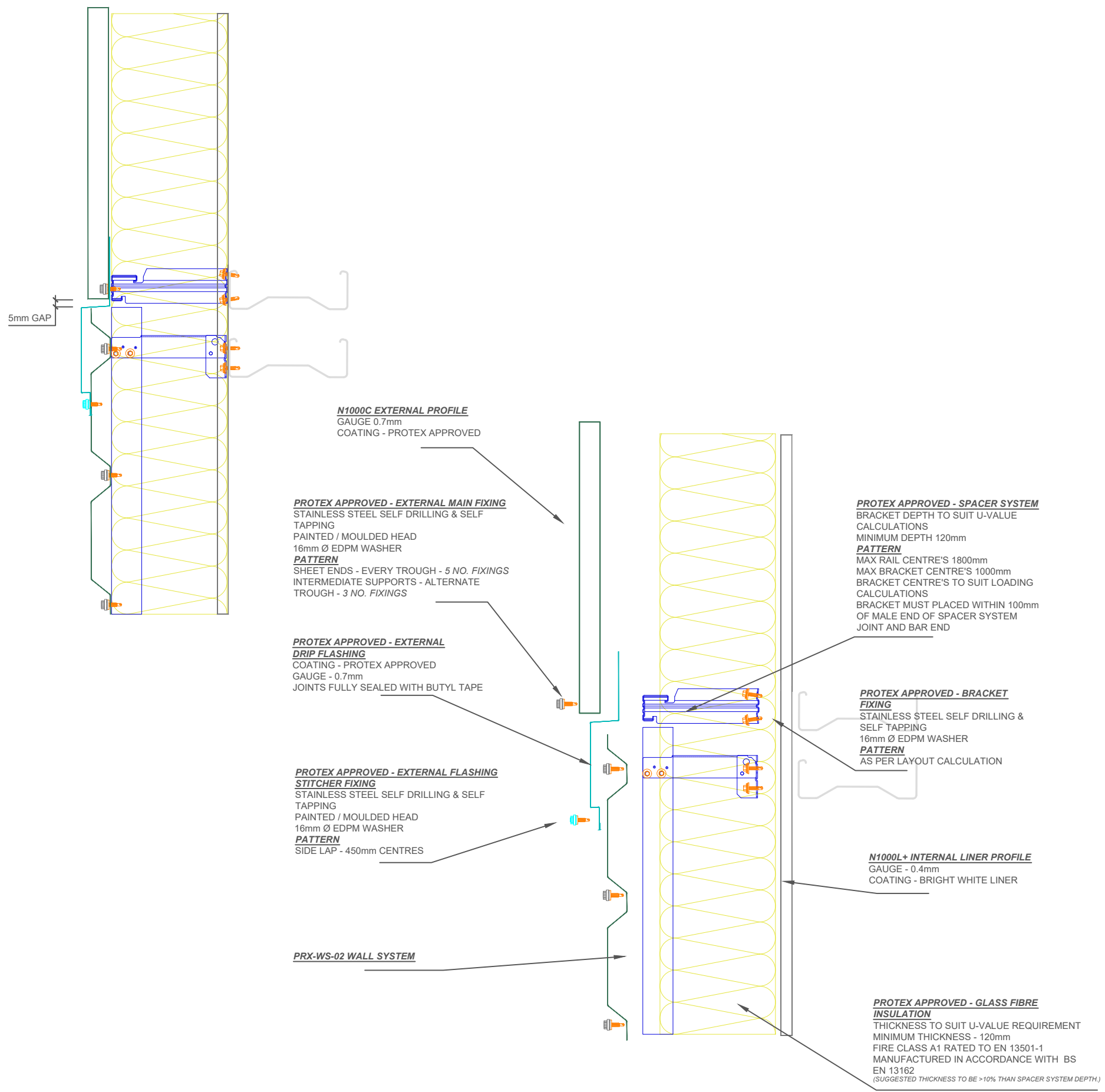
This draft drawing has been supplied by Firth Steels Ltd for guidance purposes only and is provided free of charge. It represents a suggested typical detail and should not be assumed as suitable for any specific project or application. It is essential to read this in conjunction with the Protex System specification documents to ensure completeness of information. Please note, no responsibility is assumed for errors or misinterpretations resulting from the information contained within this drawing. Details depicted are for illustration purposes only, and no liability is accepted for their use. Firth Steels reserves the right to modify details without notice. This drawing is the property of Firth Steels Ltd, any reproduction without explicit written consent is prohibited. Firth Steels is committed to ongoing improvement. The details and data shared in this document are reflective of the current state as of the issue date. It is the duty of the recipients to ensure that the information in this document is still up-to-date at the time of its use.

Drawing Number
Protex-WS01-7 Shutter Door Detail

Drawn by KP	Checked by TO	Date 24/09/2024
----------------	------------------	--------------------

Project Title PRX-WS-01	Size A3	Revision A
----------------------------	------------	---------------

<<< DO NOT SCALE FROM THIS DRAWING >>>



- INSTALLATION NOTES**
- FLASHING JOINTS SEALED WITH BUTYL
 - FLASHING JOINTS FIXED AT 100mm CENTRES (RIVET OR STITCH)
 - FLASHINGS FIXED AT 450mm CENTRES
 - BRACKET MUST BE POSITIONED WITHIN 100mm OF END OF BAR OR MALE END JOIN
 - NO IMPACT DRIVERS OR CLUTCHLESS DRILLS
 - NO CARBON FIXINGS

REV	DATE	DESCRIPTION

FirthSteels[®]
Firth Steels Ltd, Calderbank, River Street, Brighouse, West Yorkshire HD6 1LU
Technical@firth-steels.co.uk +44 1484 405940 Firth-steels.co.uk

SGS
SGS
SGS
UKAS
PlanetMark

PROTEX[®]

UK
CA

LPCB
UKAS
LPS 1181 Cert/LPCB ref. 1611a

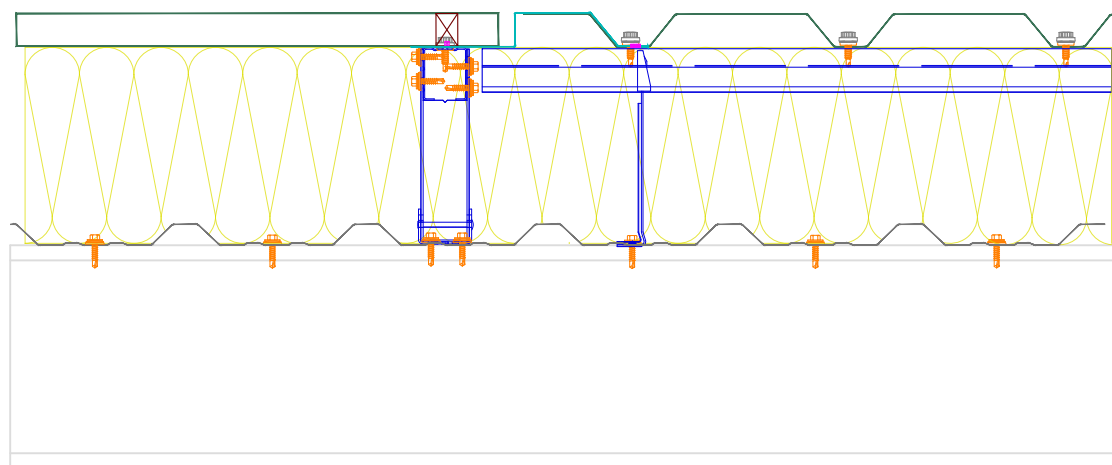
This draft drawing has been supplied by Firth Steels Ltd for guidance purposes only and is provided free of charge. It represents a suggested typical detail and should not be assumed as suitable for any specific project or application. It is essential to read this in conjunction with the Protex System specification documents to ensure completeness of information. Please note, no responsibility is assumed for errors or misinterpretations resulting from the information contained within this drawing. Details depicted are for illustration purposes only, and no liability is accepted for their use. Firth Steels reserves the right to modify details without notice. This drawing is the property of Firth Steels Ltd, any reproduction without explicit written consent is prohibited. Firth Steels is committed to ongoing improvement. The details and data shared in this document are reflective of the current state as of the issue date. It is the duty of the recipients to ensure that the information in this document is still up-to-date at the time of its use.

Drawing Number
Protex-WS01-8 Horizontal to Vertical Above

Drawn by KP	Checked by TO	Date 24/09/2024
----------------	------------------	--------------------

Project Title PRX-WS-01	Size A3	Revision A
----------------------------	------------	---------------

<<< DO NOT SCALE FROM THIS DRAWING >>>



PROTEX APPROVED - EXTERNAL MAIN FIXING
 STAINLESS STEEL SELF DRILLING & SELF TAPPING
 PAINTED / MOULDED HEAD
 16mm Ø EDPM WASHER
PATTERN
 SHEET ENDS - EVERY TROUGH - 5 NO. FIXINGS
 INTERMEDIATE SUPPORTS - ALTERNATE TROUGH - 3 NO. FIXINGS

PROTEX APPROVED - EXTERNAL FLASHING STITCHER FIXINGS
 STAINLESS STEEL SELF DRILLING / SELF TAPPING
 PAINTED / MOULDED HEAD
 16mm Ø EDPM WASHER
PATTERN
 450mm CENTRES

PROTEX APPROVED - VENTED FOAM FILLER
 PROFILE - N1000C
 COLOUR - BLACK
 VENTED AT TOP OF FILLER

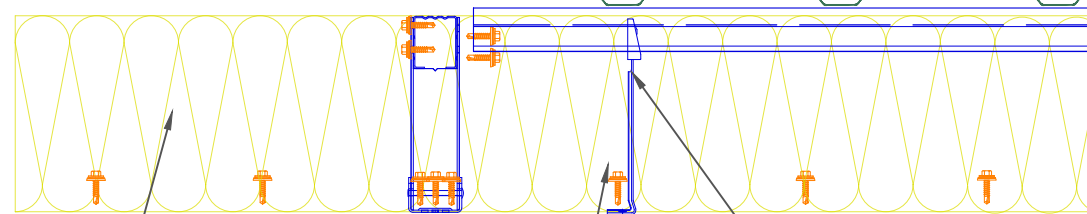
PROTEX APPROVED - EXTERNAL FLASHING COATING - PROTEX APPROVED
 GAUGE - 0.7mm
 JOINTS FULLY SEALED WITH BUTYL TAPE

PROTEX APPROVED - FLASHING SEALANT
 9mm * 3mm BUTYL TAPE / 4mm BEAD
LOCATION
 1-NO. CONTINUOUS RUN POSITIONED WEATHER SIDE OF FIXING

N1000C EXTERNAL PROFILE
 GAUGE 0.7mm
 COATING - PROTEX APPROVED

PROTEX APPROVED - VENTED FOAM FILLER SEALANT
 GUN GRADE BUTYL
 APPROX 4mm Ø BEAD
LOCATION
 1-NO. CONTINUOUS RUN AT BASE OF FOAM FILLER

PRX-WS-02 WALL SYSTEM



N1000L+ INTERNAL LINER PROFILE
 GAUGE - 0.4mm
 COATING - BRIGHT WHITE LINER

PROTEX APPROVED - GLASS FIBRE INSULATION
 THICKNESS TO SUIT U-VALUE REQUIREMENT
 MINIMUM THICKNESS - 120mm
 FIRE CLASS A1 RATED TO EN 13501-1
 MANUFACTURED IN ACCORDANCE WITH BS EN 13162
 (SUGGESTED THICKNESS TO BE >10% THAN SPACER SYSTEM DEPTH.)

PROTEX APPROVED - BRACKET FIXING
 STAINLESS STEEL SELF DRILLING & SELF TAPPING
 16mm Ø EDPM WASHER
PATTERN
 AS PER LAYOUT CALCULATION

PROTEX APPROVED - SPACER SYSTEM
 BRACKET DEPTH TO SUIT U-VALUE CALCULATIONS
 MINIMUM DEPTH 120mm
PATTERN
 MAX RAIL CENTRE'S 1800mm
 MAX BRACKET CENTRE'S 1000mm
 BRACKET CENTRE'S TO SUIT LOADING CALCULATIONS
 BRACKET MUST BE PLACED WITHIN 100mm OF MALE END OF SPACER SYSTEM JOINT AND BAR END

REV	DATE	DESCRIPTION
-----	------	-------------

FirthSteels
 Firth Steels Ltd, Calderbank, River Street, Brighouse, West Yorkshire HD6 1LU
 Technical@firth-steels.co.uk +44 1484 405940 Firth-steels.co.uk



PROTEX



This draft drawing has been supplied by Firth Steels Ltd for guidance purposes only and is provided free of charge. It represents a suggested typical detail and should not be assumed as suitable for any specific project or application. It is essential to read this in conjunction with the Protex System specification documents to ensure completeness of information. Please note, no responsibility is assumed for errors or misinterpretations resulting from the information contained within this drawing. Details depicted are for illustration purposes only, and no liability is accepted for their use. Firth Steels reserves the right to modify details without notice. This drawing is the property of Firth Steels Ltd, any reproduction without explicit written consent is prohibited. Firth Steels is committed to ongoing improvement. The details and data shared in this document are reflective of the current state as of the issue date. It is the duty of the recipients to ensure that the information in this document is still up-to-date at the time of its use.

Drawing Number
Protex-WS01-9 Horizontal to Vertical Adjacent

Drawn by
 KP

Checked by
 TO

Date
 24/09/2024

Project Title
 PRX-WS-01

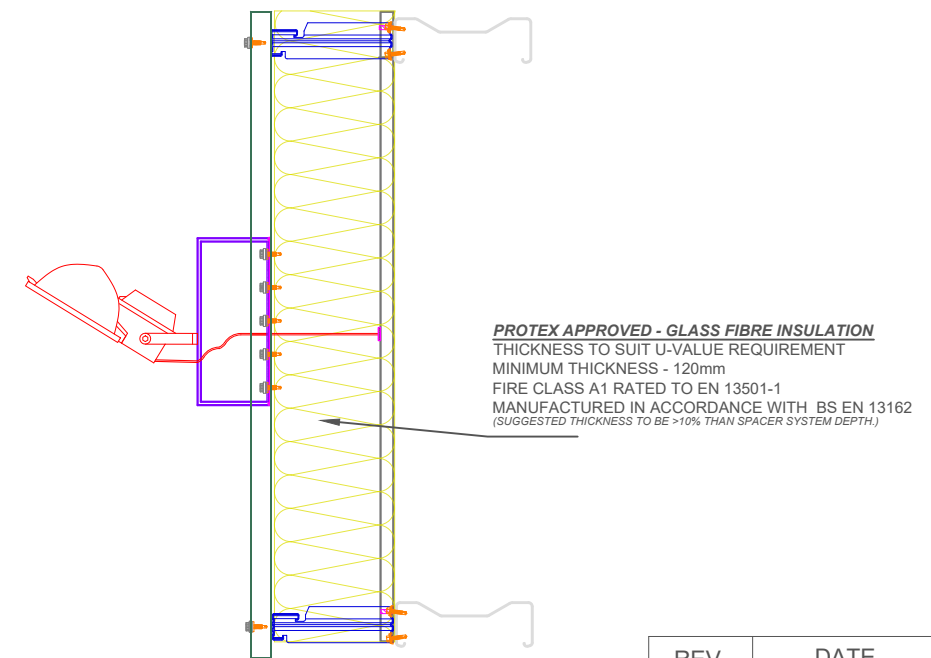
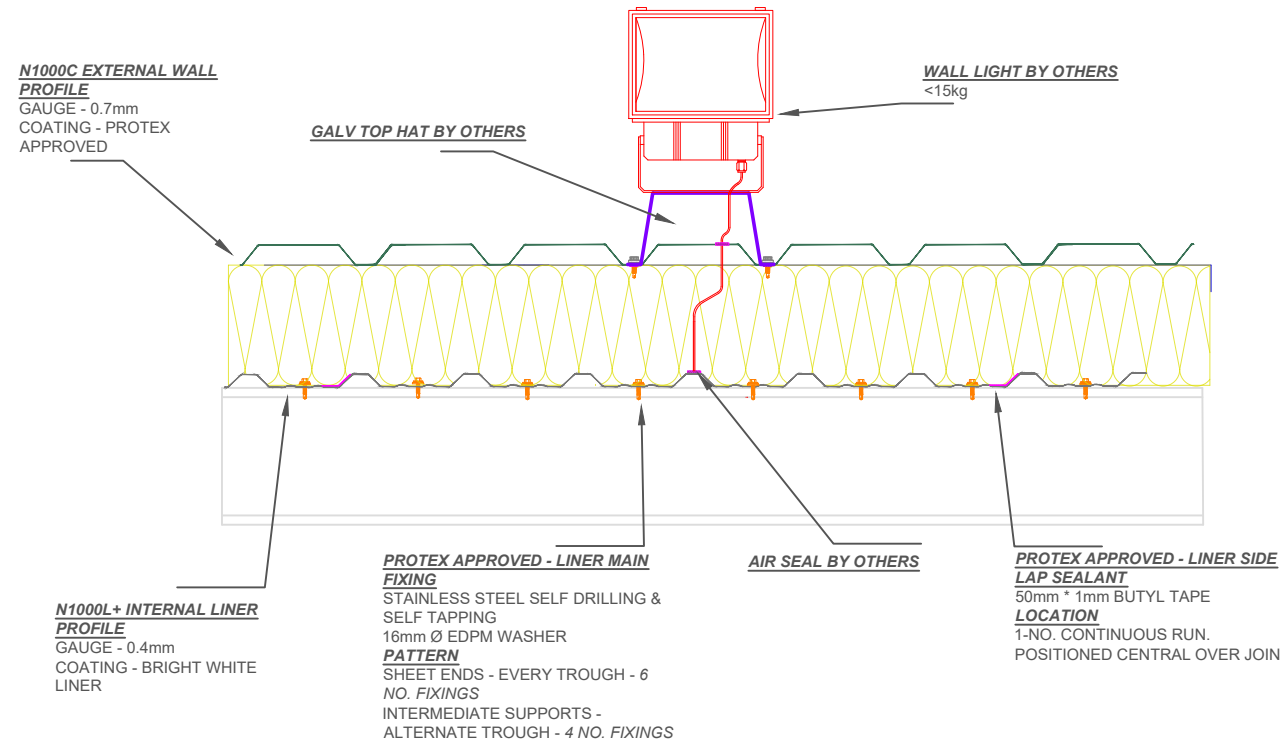
Size
 A3

Revision
 A

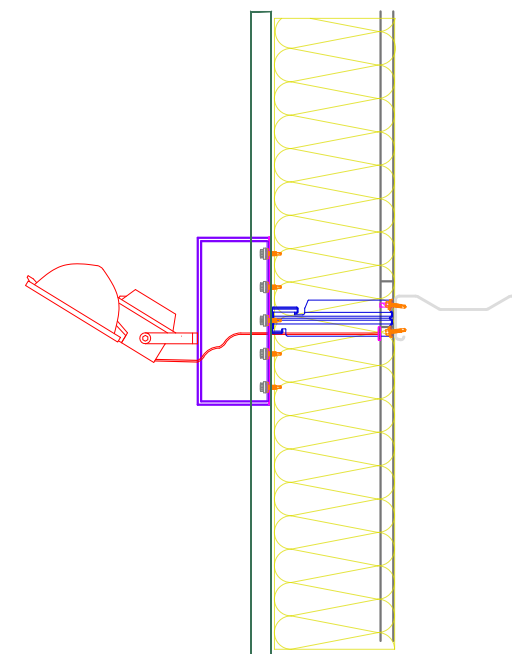
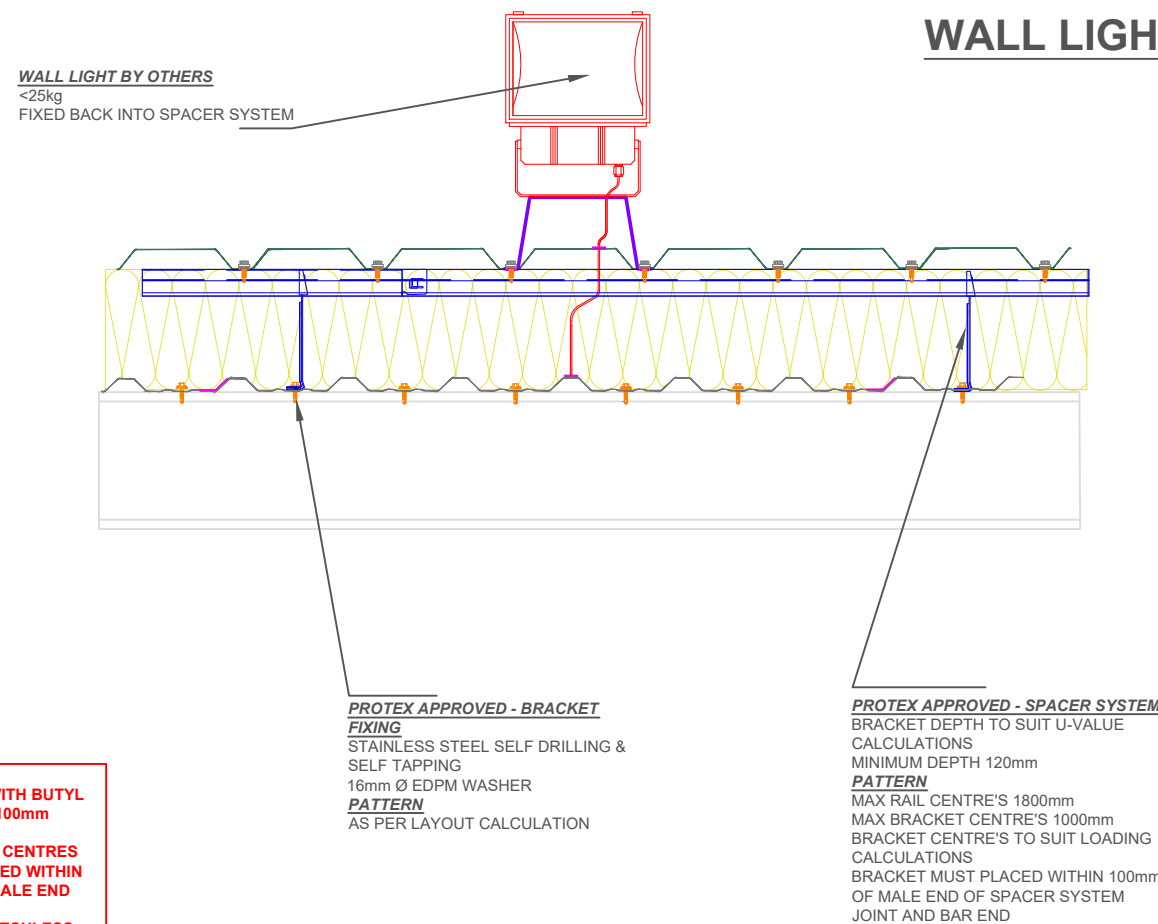
<<< DO NOT SCALE FROM THIS DRAWING >>>

- INSTALLATION NOTES**
- FLASHING JOINTS SEALED WITH BUTYL
 - FLASHING JOINTS FIXED AT 100mm CENTRES (RIVET OR STITCH)
 - FLASHINGS FIXED AT 450mm CENTRES
 - BRACKET MUST BE POSITIONED WITHIN 100mm OF END OF BAR OR MALE END JOINT
 - NO IMPACT DRIVERS OR CLUTCHLESS DRILLS
 - NO CARBON FIXINGS

WALL LIGHT UNDER 15kg



WALL LIGHT UNDER 25kg



- INSTALLATION NOTES**
- FLASHING JOINTS SEALED WITH BUTYL
 - FLASHING JOINTS FIXED AT 100mm CENTRES (RIVET OR STITCH)
 - FLASHINGS FIXED AT 450mm CENTRES
 - BRACKET MUST BE POSITIONED WITHIN 100mm OF END OF BAR OR MALE END JOIN
 - NO IMPACT DRIVERS OR CLUTCHLESS DRILLS
 - NO CARBON FIXINGS

*CONTACT FIRTH STEELS TECHNICAL FOR LOADINGS ABOVE 25kg
technical@firth-steels.co.uk

REV	DATE	DESCRIPTION

FirthSteels[®]
Firth Steels Ltd, Calderbank, River Street, Brighouse, West Yorkshire HD6 1LU
Technical@firth-steels.co.uk +44 1484 405940 Firth-steels.co.uk

SGS
SGS
SGS
UKAS
PlanetMark

PROTEX[®]

UK
CA

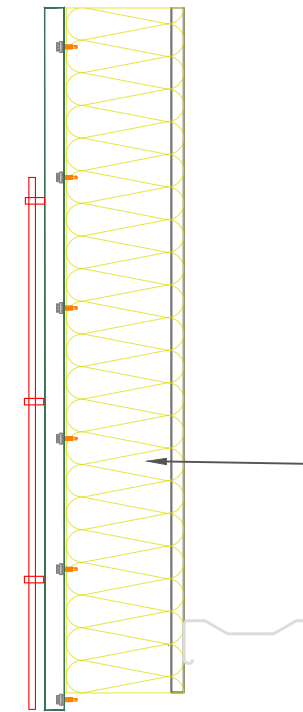
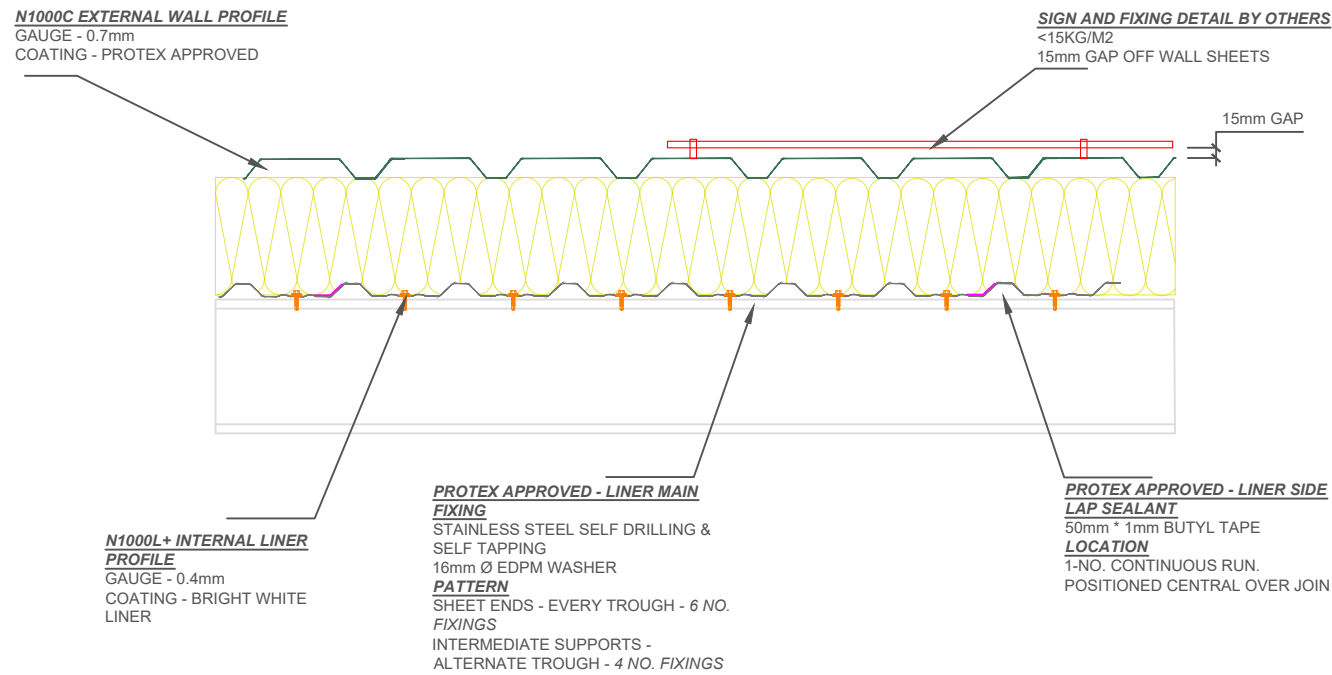
LPCB
UKAS
LPS 1181 Cert/LPCB ref. 1611a

This draft drawing has been supplied by Firth Steels Ltd for guidance purposes only and is provided free of charge. It represents a suggested typical detail and should not be assumed as suitable for any specific project or application. It is essential to read this in conjunction with the Protex System specification documents to ensure completeness of information. Please note, no responsibility is assumed for errors or misinterpretations resulting from the information contained within this drawing. Details depicted are for illustration purposes only, and no liability is accepted for their use. Firth Steels reserves the right to modify details without notice. This drawing is the property of Firth Steels Ltd, any reproduction without explicit written consent is prohibited. Firth Steels is committed to ongoing improvement. The details and data shared in this document are reflective of the current state as of the issue date. It is the duty of the recipients to ensure that the information in this document is still up-to-date at the time of its use.

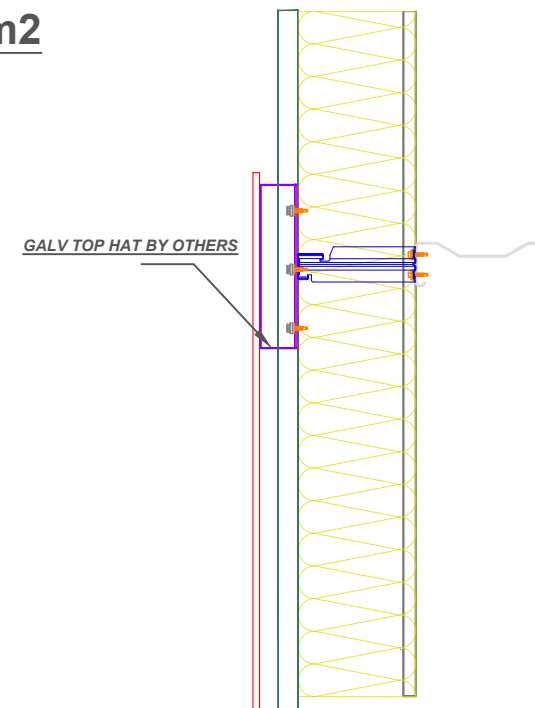
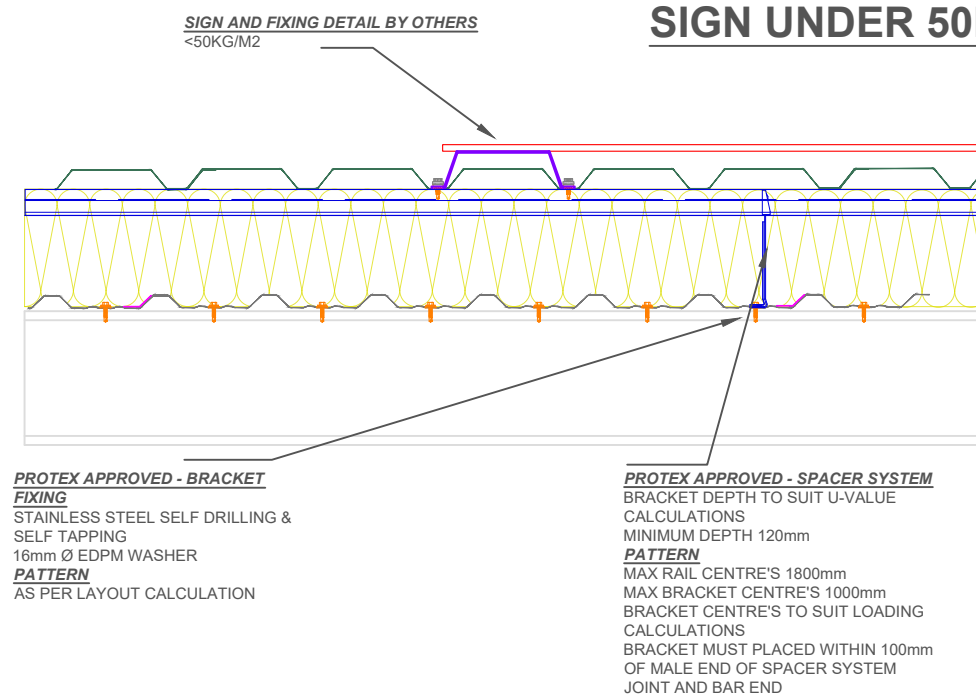
Drawing Number Protex-WS01-10 Light Fixing			
Drawn by KP	Checked by TO	Date 24/09/2024	
Project Title PRX-WS-01		Size A3	Revision A

<<< DO NOT SCALE FROM THIS DRAWING >>>

SIGN UNDER 15kg/m2



SIGN UNDER 50kg/m2



- INSTALLATION NOTES**
- FLASHING JOINTS SEALED WITH BUTYL
 - FLASHING JOINTS FIXED AT 100mm CENTRES (RIVET OR STITCH)
 - FLASHINGS FIXED AT 450mm CENTRES
 - BRACKET MUST BE POSITIONED WITHIN 100mm OF END OF BAR OR MALE END JOINT
 - NO IMPACT DRIVERS OR CLUTCHLESS DRILLS
 - NO CARBON FIXINGS

REV	DATE	DESCRIPTION



This draft drawing has been supplied by Firth Steels Ltd for guidance purposes only and is provided free of charge. It represents a suggested typical detail and should not be assumed as suitable for any specific project or application. It is essential to read this in conjunction with the Protex System specification documents to ensure completeness of information. Please note, no responsibility is assumed for errors or misinterpretations resulting from the information contained within this drawing. Details depicted are for illustration purposes only, and no liability is accepted for their use. Firth Steels reserves the right to modify details without notice. This drawing is the property of Firth Steels Ltd, any reproduction without explicit written consent is prohibited. Firth Steels is committed to ongoing improvement. The details and data shared in this document are reflective of the current state as of the issue date. It is the duty of the recipients to ensure that the information in this document is still up-to-date at the time of its use.

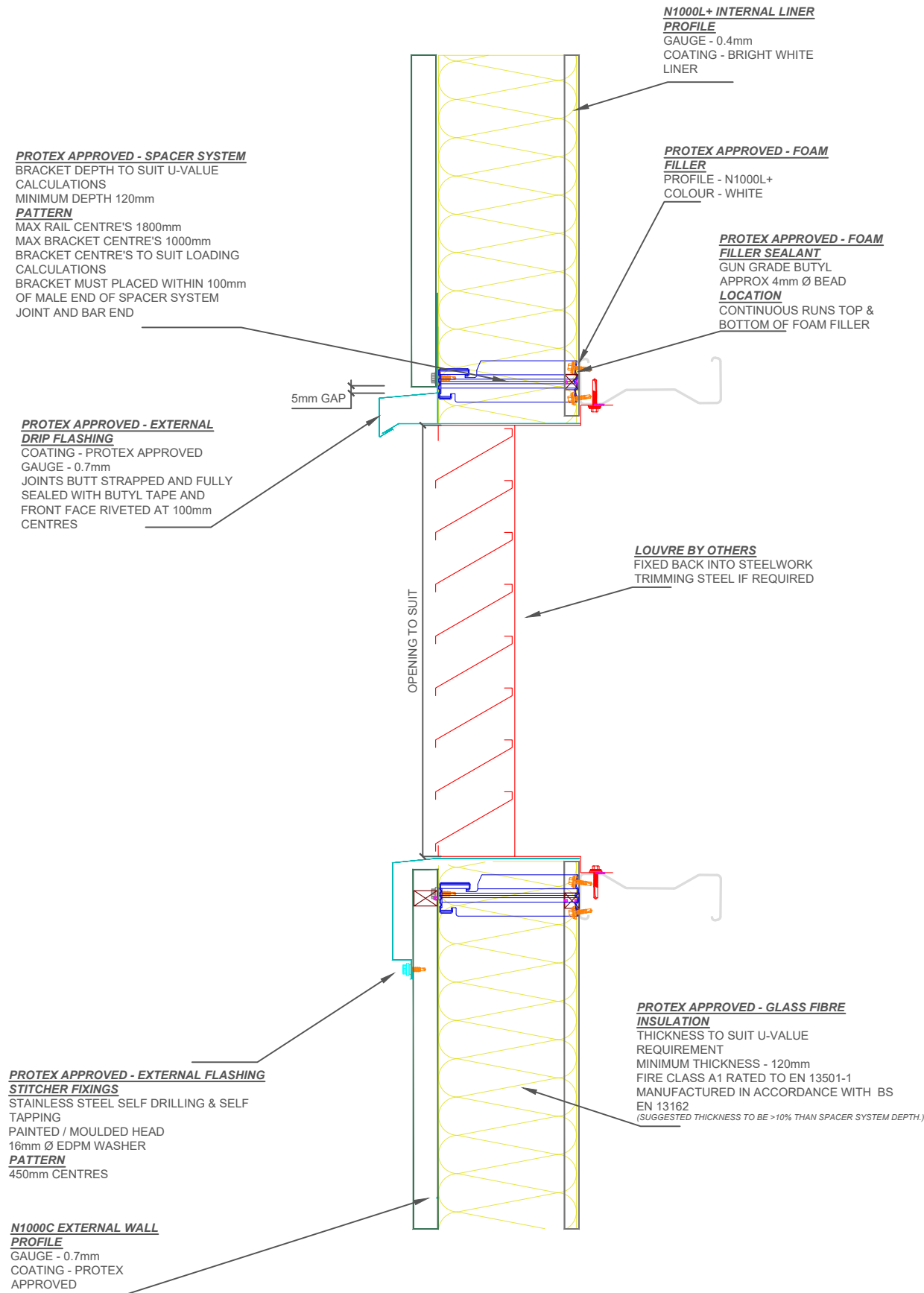
Drawing Number
Protex-WS01-11 Signage Fixing

Drawn by KP	Checked by TO	Date 24/09/2024
----------------	------------------	--------------------

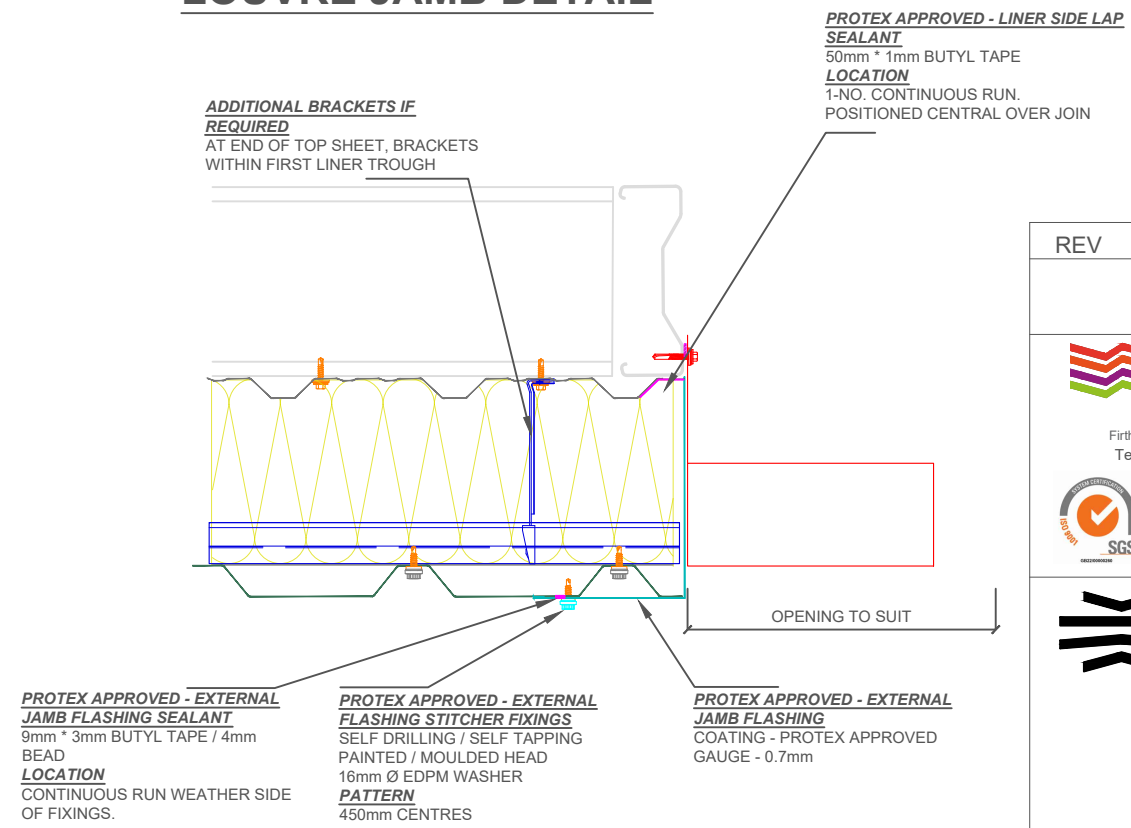
Project Title PRX-WS-01	Size A3	Revision A
----------------------------	------------	---------------

<<< DO NOT SCALE FROM THIS DRAWING >>>

LOUVRE HEADER & CILL DETAIL



LOUVRE JAMB DETAIL



- INSTALLATION NOTES**
- FLASHING JOINTS SEALED WITH BUTYL
 - FLASHING JOINTS FIXED AT 100mm CENTRES (RIVET OR STITCH)
 - FLASHINGS FIXED AT 450mm CENTRES
 - BRACKET MUST BE POSITIONED WITHIN 100mm OF END OF BAR OR MALE END JOINT
 - NO IMPACT DRIVERS OR CLUTCHLESS DRILLS
 - NO CARBON FIXINGS

REV	DATE	DESCRIPTION

FirthSteels
Firth Steels Ltd, Calderbank, River Street, Brighouse, West Yorkshire HD6 1LU
Technical@firth-steels.co.uk +44 1484 405940 Firth-steels.co.uk

SGS
UKAS
PlanetMark

PROTEX
UKCA
LPCB
UKAS

LPS 1181 Curt/LPCB ref. 1611a

This draft drawing has been supplied by Firth Steels Ltd for guidance purposes only and is provided free of charge. It represents a suggested typical detail and should not be assumed as suitable for any specific project or application. It is essential to read this in conjunction with the Protex System specification documents to ensure completeness of information. Please note, no responsibility is assumed for errors or misinterpretations resulting from the information contained within this drawing. Details depicted are for illustration purposes only, and no liability is accepted for their use. Firth Steels reserves the right to modify details without notice. This drawing is the property of Firth Steels Ltd, any reproduction without explicit written consent is prohibited. Firth Steels is committed to ongoing improvement. The details and data shared in this document are reflective of the current state as of the issue date. It is the duty of the recipients to ensure that the information in this document is still up-to-date at the time of its use.

Drawing Number
Protex-WS01-12 Louvre

Drawn by KP	Checked by TO	Date 24/09/2024
Project Title PRX-WS-01		Size A3
		Revision A

<<< DO NOT SCALE FROM THIS DRAWING >>>